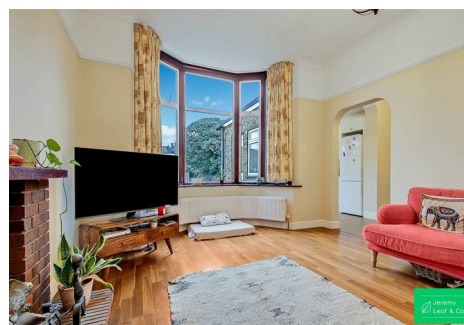
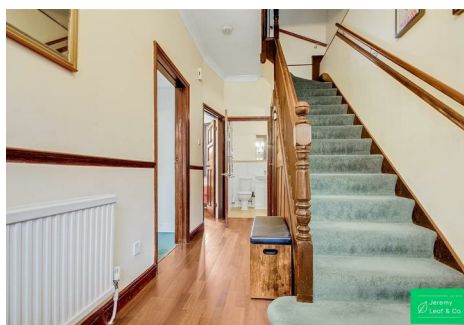


est 1979

Jeremy
Leaf & Co.



Leicester Road, London

£1,200,000

- Freehold House
- 3 Bedrooms
- Cellar
- Victorian Period Home
- High Ceilings
- Close to Shops, Restaurants and Schools of East Finchley

98 High Road, London, N2 9EB
020 8444 5222

eastfinchley@jeremyleaf.co.uk
<https://www.jeremyleaf.co.uk/>

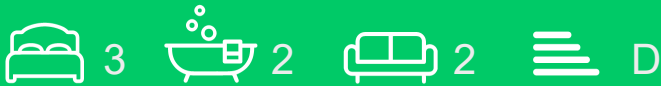
Leicester Road, London, N2 9EA

We offer for sale a spacious three bedroom Victorian period semi detached house located on a highly desirable County roads in the heart of East Finchley. Leicester Road, with it's close proximity to exceptional schools and fantastic open spaces is the perfect location for family life.

The house has a great deal of entertaining space on the ground floor with two receptions and a separate eat-in kitchen which has direct access to a private garden. There is also a guest bathroom on the ground floor for convenience.

On the first floor there are three bedrooms and a large family bathroom. There are high ceilings throughout and the house is particularly bright.

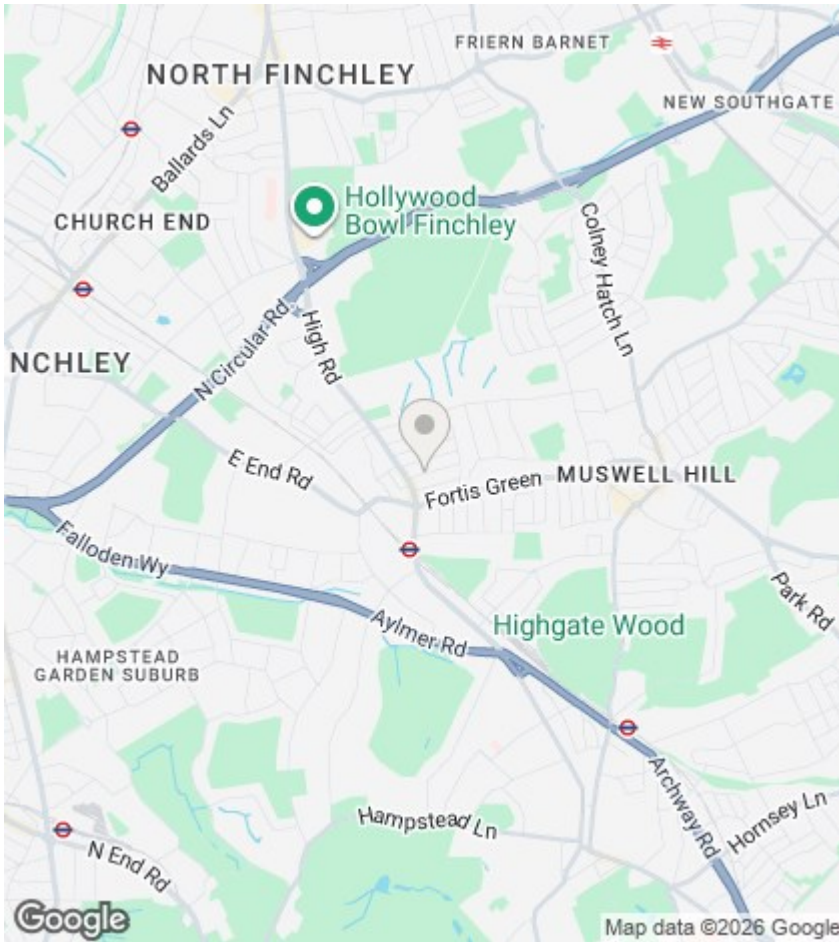
The house is located close to the shops and restaurants of East Finchley High Road. East Finchley Underground Station (Zone 3) and Cherry Tree Wood is a short walk away.



Council Tax Band: E







Directions

Viewings

Viewings by arrangement only. Call 020 8444 5222 to make an appointment.

EPC Rating:

D

Energy Efficiency Rating		Current	Potential
Very energy efficient - lower running costs			
(92 plus) A			
(81-91) B			83
(69-80) C			
(55-68) D		64	
(39-54) E			
(21-38) F			
(1-20) G			
Not energy efficient - higher running costs			
England & Wales		EU Directive 2002/91/EC	

