



# Wood Road, Hillsborough, S6 4LX

Offers Over £210,000

3 1 1



## Why You'll Love It

This delightful terraced home is brimming with character and warmth, offering an inviting layout perfect for both relaxing and entertaining. Set back slightly from the road behind a low-maintenance frontage, you step through the front door into a lovely bay-fronted lounge. This front living room is a beautiful space, bathed in natural light and styled in soft tones with high ceilings and period features, giving it a sense of calm and elegance.

To the rear, the property opens up into a generous kitchen/diner – a wonderfully sociable hub of the home. The kitchen is modern yet charming, with cabinetry and plenty of worktop space for preparing meals or hosting friends. The dining area has ample room for a full table and chairs, creating a cosy space for family dinners or coffee with friends. From here, a doorway leads down to a useful cellar space, perfect for extra storage.

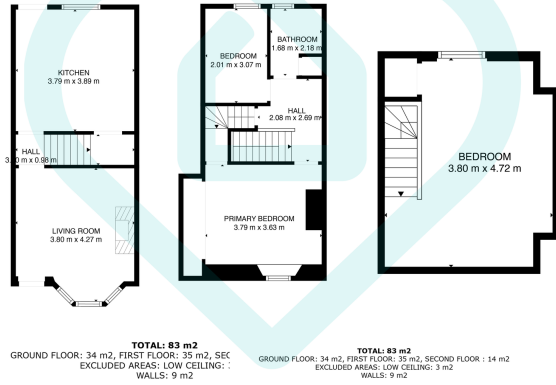
Upstairs, the first floor hosts two bedrooms and the family bathroom. The primary bedroom sits at the front and spans the full width of the home. It's a bright and comfortable double room with traditional styling, ideal for a restful retreat. The second bedroom is a well-sized single overlooking the garden – perfect as a nursery, study, or guest room. Serving the first floor is the neatly presented family bathroom, complete with a shower cubicle, a wash basin, and a WC – all set against a clean and neutral backdrop.

The second floor is home to a fabulous attic bedroom – a spacious and versatile third bedroom with plenty of natural light from the rear-facing roof window. Whether used as a main bedroom, a creative studio, or a quiet home office, this space adds wonderful flexibility to the home.

At the rear, the garden is a real bonus. It provides a peaceful outdoor space with paved and pebbled areas perfect for a summer BBQ or a spot of gardening. There's also an impressive amount of outdoor storage, including a brick-built outhouse, ideal for tools, bikes, and more.

On-street parking is available to the front, and the street has a pleasant, residential feel with a real sense of community. The property is move-in ready and beautifully maintained, with tasteful décor and thoughtful touches throughout.

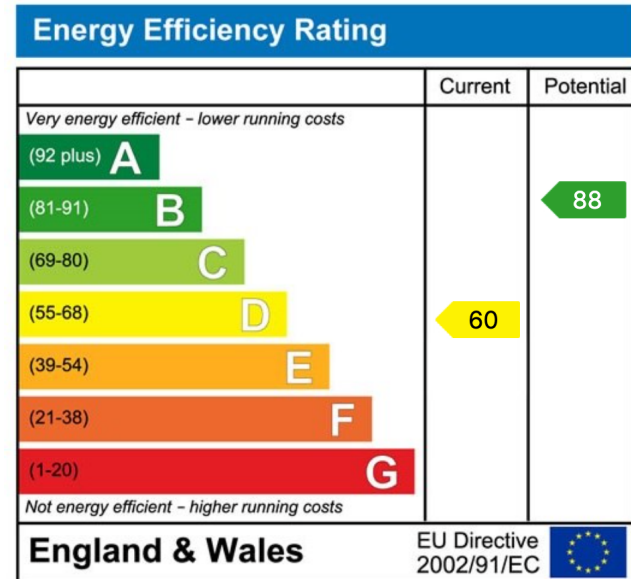




This floor plan is for illustrative purposes only. All measurements and layouts are approximations and do not necessarily capture the precise specifications of the property. No responsibility is taken for any error, omission, or misstatement. We always recommend viewing in person to confirm the exact floor plan of a property. Made with Metropix.



- Three Good Sized Bedrooms
- Well Presented Throughout
- Plenty Of Outdoor Storage
- Popular Hillsborough Location
- Close To Independent Shops, Cafes and Pubs
- Great Transport Links
- Close To Green Space
- Great Space Throughout
- Open Kitchen/Diner
- On Street Parking



**Sales | Lettings | New Homes**

VAT Reg Number: 191 3588 84  
 Company Reg Number: 08610489  
 Company Reg Address: 67 Middlewood Road, Hillsborough, Sheffield, S6 4GX.

The MorfittSmith Building  
 67 Middlewood Road  
 Hillsborough  
 Sheffield  
 S6 4GX

**Get in touch - arrange an appointment**



0114 232 1764  
 sales@morfittsmith.co.uk  
 lettings@morfittsmith.co.uk  
 newhomes@morfittsmith.co.uk  
 www.morfittsmith.co.uk



@MorfittSmith  
 @MorfittSmith  
 MorfittSmith  
 Estate & Letting Agent