



10 Inglewhite Close,  
Redvales, Bury

£189,950





## 10 Inglewhite Close

Redvales, Bury

Council Tax band: B

Tenure: Leasehold

EPC Energy Efficiency Rating: D

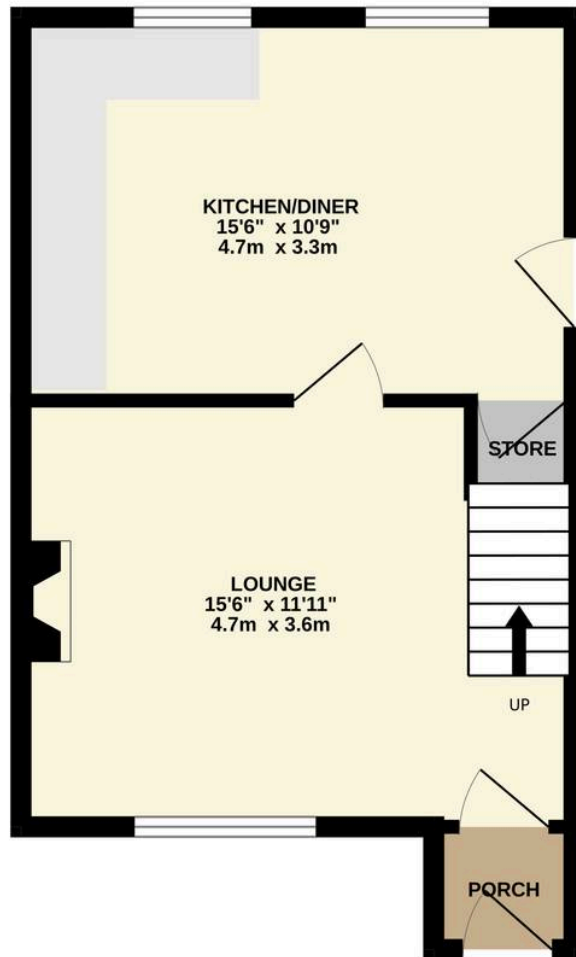
- Attractive and well-proportioned garden fronted semi-detached home offering two double bedrooms, generous living space and private driveway parking
- Welcoming entrance porch, bright, spacious lounge, modern open-plan kitchen-diner providing direct garden access
- Two comfortable double bedrooms
- Contemporary family bathroom
- Thoughtfully designed built-in storage throughout, maximising practicality and keeping the home clutter-free
- Large, flat and fully enclosed rear garden offering privacy
- Open aspect to the rear, enhancing the sense of space and providing a more peaceful, less overlooked setting
- Situated in the ever-popular Redvales area, known for its friendly community feel, strong local schools and easy access to Bury town centre
- Ideal for first-time buyers, downsizers, young families or buy-to-let investors thanks to excellent commuter links, nearby parks, riverside walks and consistently strong rental demand



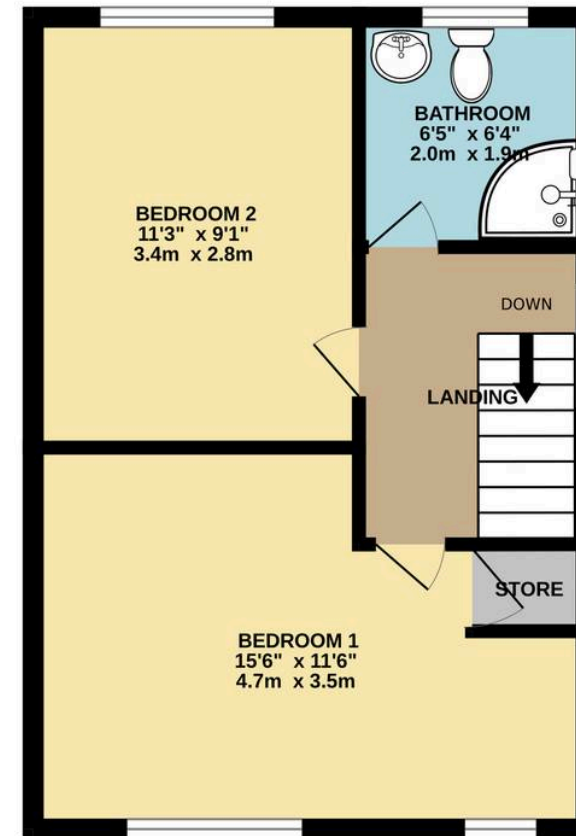




GROUND FLOOR  
361 sq.ft. (33.5 sq.m.) approx.



1ST FLOOR  
352 sq.ft. (32.7 sq.m.) approx.



TOTAL FLOOR AREA : 713 sq.ft. (66.2 sq.m.) approx.

Whilst every attempt has been made to ensure the accuracy of the floorplan contained here, measurements of doors, windows, rooms and any other items are approximate and no responsibility is taken for any error, omission or mis-statement. This plan is for illustrative purposes only and should be used as such by any prospective purchaser. The services, systems and appliances shown have not been tested and no guarantee as to their operability or efficiency can be given.  
Made with Metropix ©2026





## HARRISON ESTATE AGENTS

Harrison Estate Agents, 10 Bolton Street - BL9 0LQ

0161 797 8616

[info@harrison-estates.co.uk](mailto:info@harrison-estates.co.uk)

[www.harrison-estates.co.uk](http://www.harrison-estates.co.uk)