



Newland Court

Old Street, EC1V

Asking Price £575,000

A spacious split-level maisonette with 3 double bedrooms a bright reception room and its own private balcony all located within a stones throw from Old Street Underground Station and local amenities.

CHESTERTONS



Newland Court

Old Street, EC1V

- Spacious split-level maisonette with 3 double bedrooms
- Bright reception room & kitchen
- Private Balcony
- Located within a stones throw from Old Street Underground Station and local amenities.



A spacious split level maisonette with 3 double bedrooms a bright reception room and its own private balcony all located within a stones throw from Old Street Underground Station and local amenities.

This property comprises, entrance hall with ample storage, a bright reception room with access to the private balcony space, well equipped kitchen with space for a dining table, 3 fantastic sized bedrooms with room for wardrobes, a tiled shower room and a separate WC.

Newland Court is ideally located for access to the financial hub of the City, the technology centre of Old Street (Silicon Roundabout) which has stimulated significant growth and investment over recent years. Nightlife, bars, restaurants, boutique shops and galleries can be found, in Hoxton, Shoreditch and Clerkenwell, giving a vast array of choice within a small geographical area. It should be noted that with work almost complete on the construction of Crossrail, the property is suitably positioned to benefit from its completion, both in terms of additional transport links and the potential for future growth and investment. Old Street (Northern Line & National Rail) is the closest Underground station.

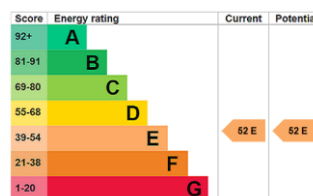
Tenure: Leasehold 171 years 10 months

Service Charge: £4000 Includes hot water, heating & buildings insurance

Ground Rent: £0

Local Authority: Islington

Council Tax Band: D



Chestertons Islington Sales

327-329 Upper Street

Islington

London

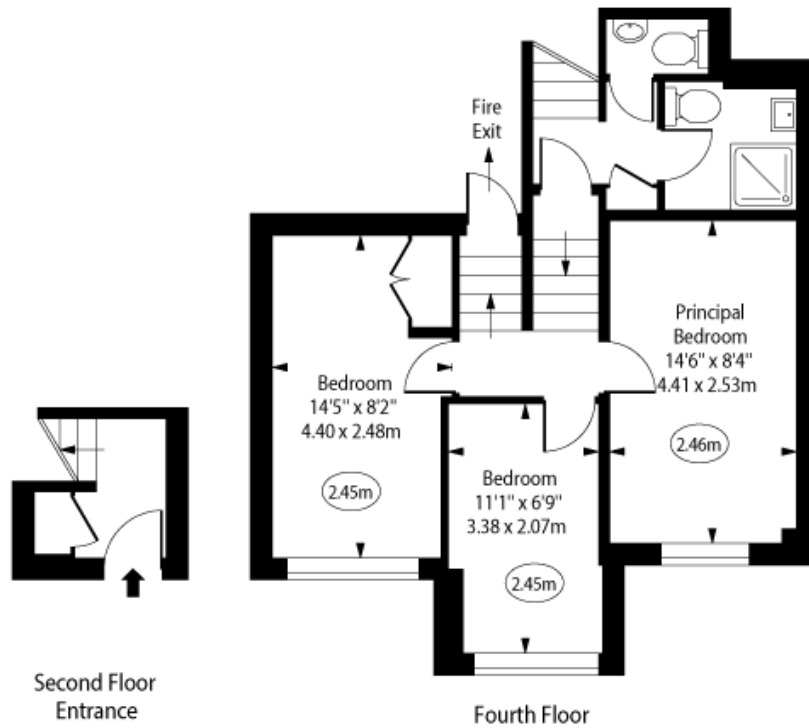
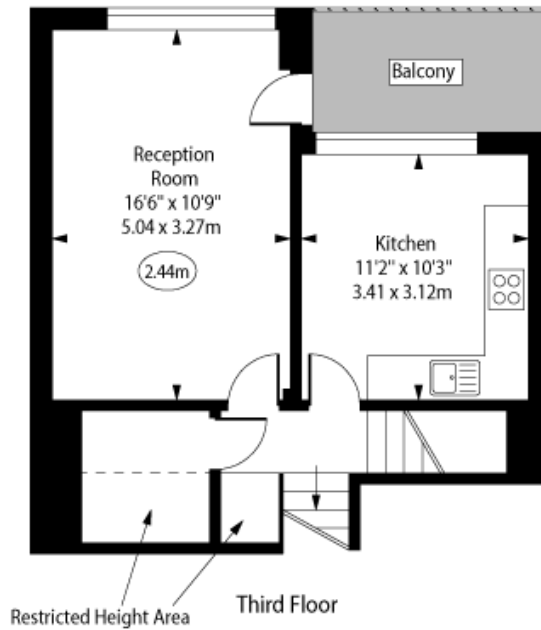
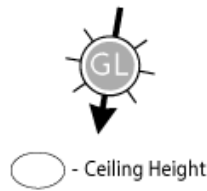
N1 2XQ

islington@chestertons.co.uk

020 7359 9777

chestertons.co.uk

Newland Court,
Old Street, EC1V



Approx Gross Internal Area 855 Sq Ft - 79.43 Sq M

Approx. Floor Area Including Restricted Heights 882 Sq Ft - 81.94 Sq M

Every attempt has been made to ensure the accuracy of the floor plan shown. However, all measurements, fixtures, fittings, and data shown are approximate interpretations and for illustrative purposes only. Measured according to the RICS. Not To Scale.

www.goldlens.co.uk
Ref. No. 030729J