



Overcliff Road, SE13

£350,000

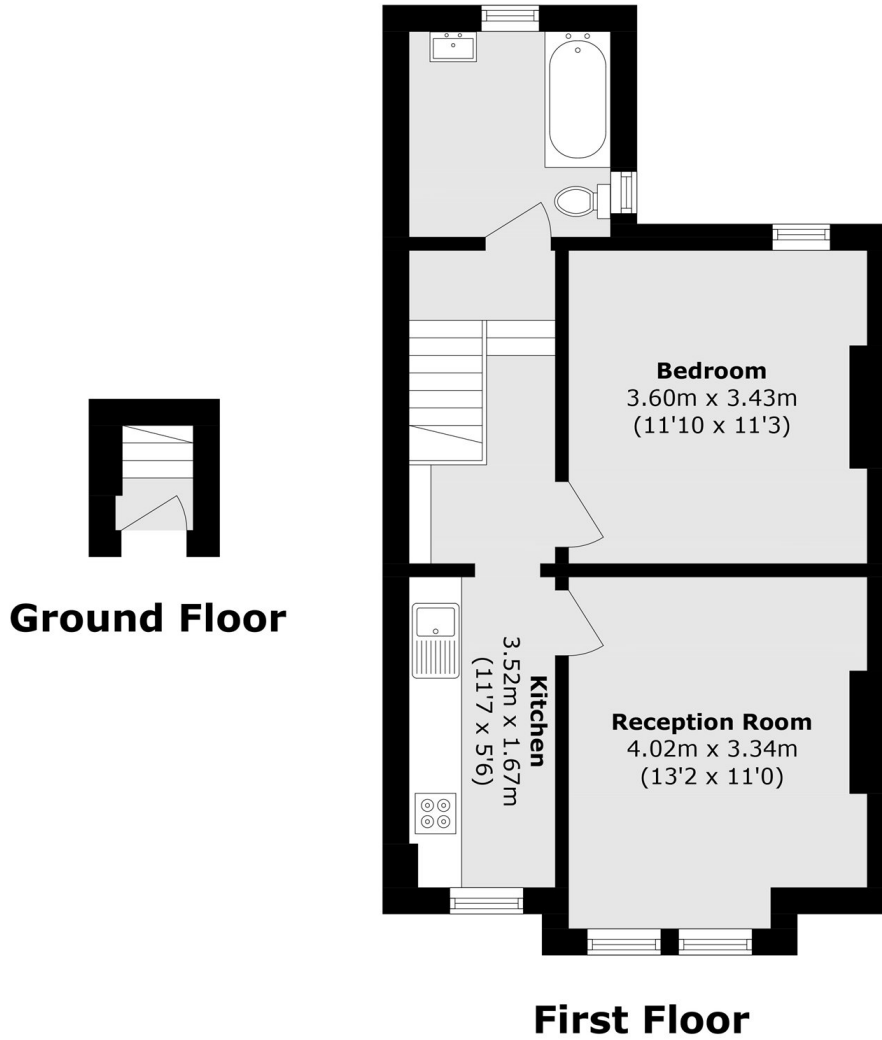
Positioned on a quiet residential road, this well sized one bedroom flat is set on the first floor of an Edwardian conversion, offering a separate reception room and kitchen, and is offered with no onward chain. The property also benefits from potential to extend into the loft, subject to the necessary consents.

Overcliff Road is a quiet residential street moments from Hilly Fields, Ladywell Fields and local amenities. Ladywell, Brockley and Lewisham stations are all within easy reach.

Features

- Double Bedroom
- Share Of Freehold
- Period Conversion
- Chain Free
- Close To Hilly Fields Park
- Close To Transport

Overcliff Road, London, SE13



Total area (approx.): 46.0 sq. m (495.1 sq. ft)