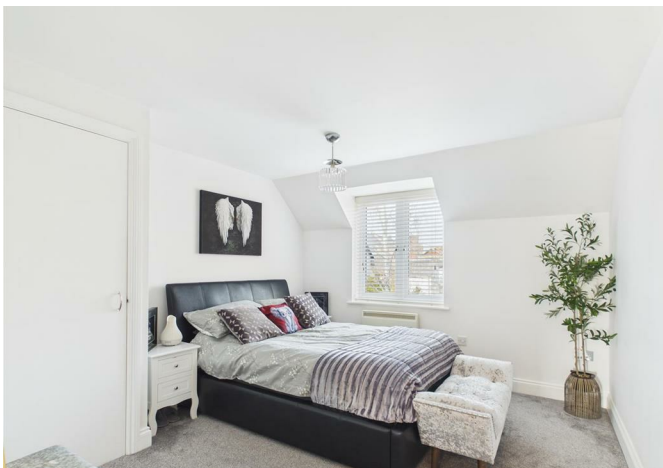




THE  
PROPERTY  
QUARTER



Sanders Place Walsworth Road, Hitchin, SG4 9SY  
£269,950



## Sanders Place Walsworth Road, Hitchin, SG4 9SY

**£269,950**

We are delighted to offer this stylish Two bedroom, second floor apartment, set within an extremely popular, gated development, close to Hitchin's mainline station, for fast commuter service into Central London. The modern interior benefits from two good size bedrooms, a fully fitted kitchen, an ensuite shower room and ample storage space.

The property also comes with the added advantage of underground parking as well as visitor parking and is sold with a long lease in excess of 100 years.

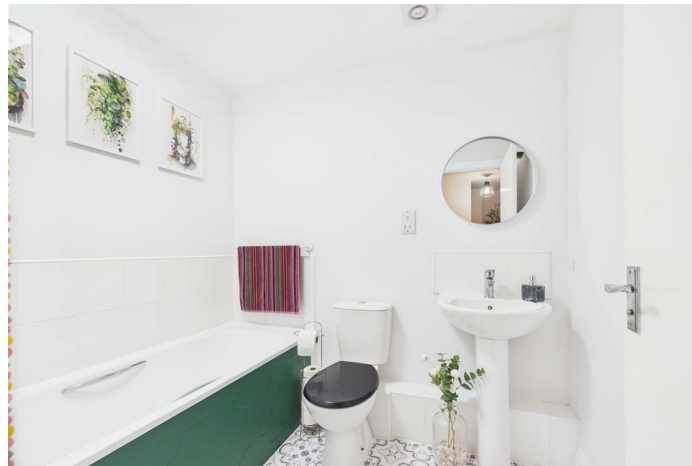
This apartment is presented in excellent decorative order throughout and would make an ideal home for a young professional or couple or alternatively a very good rental investment. An early viewing is strongly recommended.

# Q THE PROPERTY QUARTER

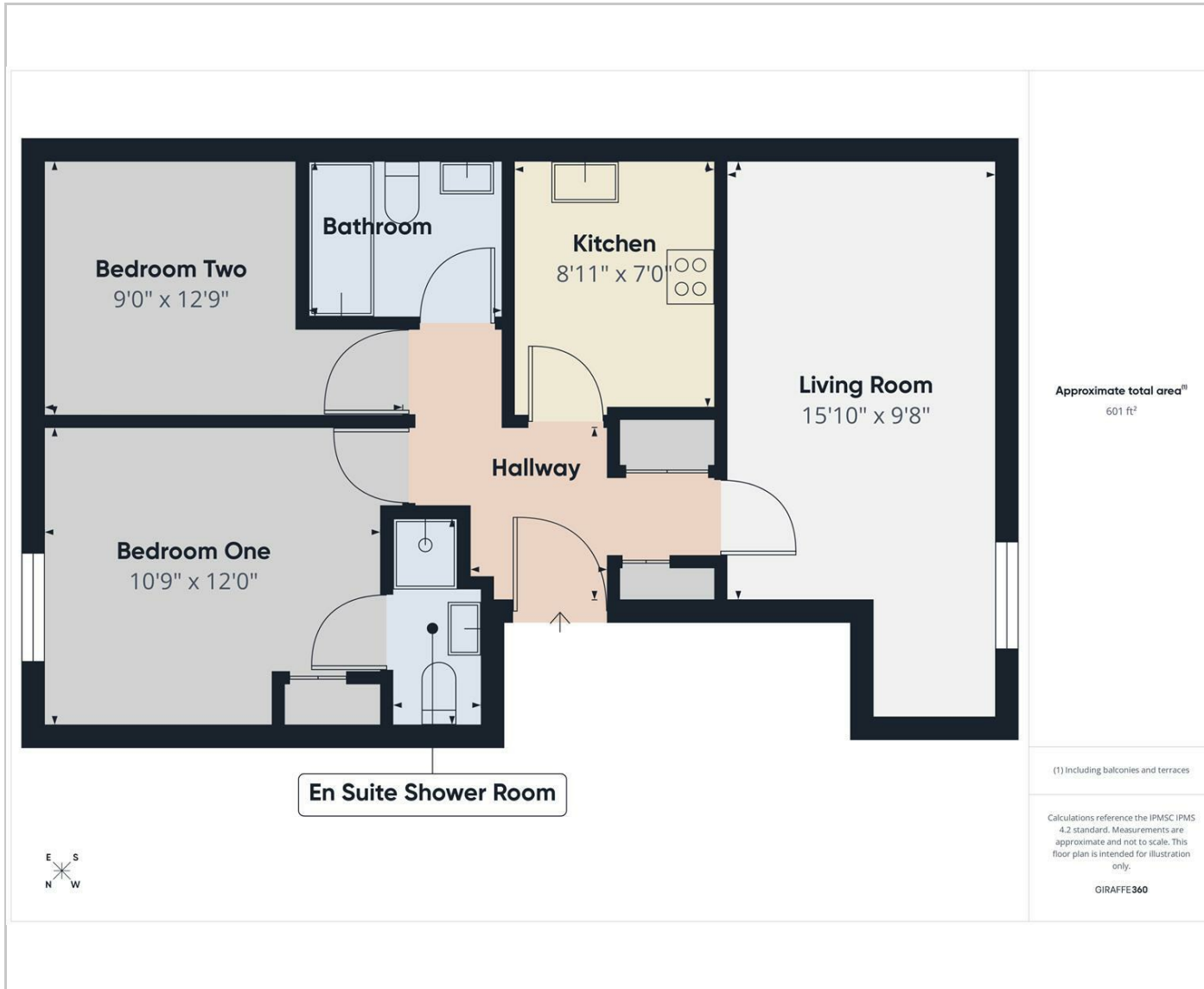
## Features

- Two Double Bedrooms
- Second Floor
- En-Suite Shower Room
- Excellent Decorative Order
- Underground Parking
- Gated Development
- Long Lease
- Popular and Convenient Location
- No Onward Chain

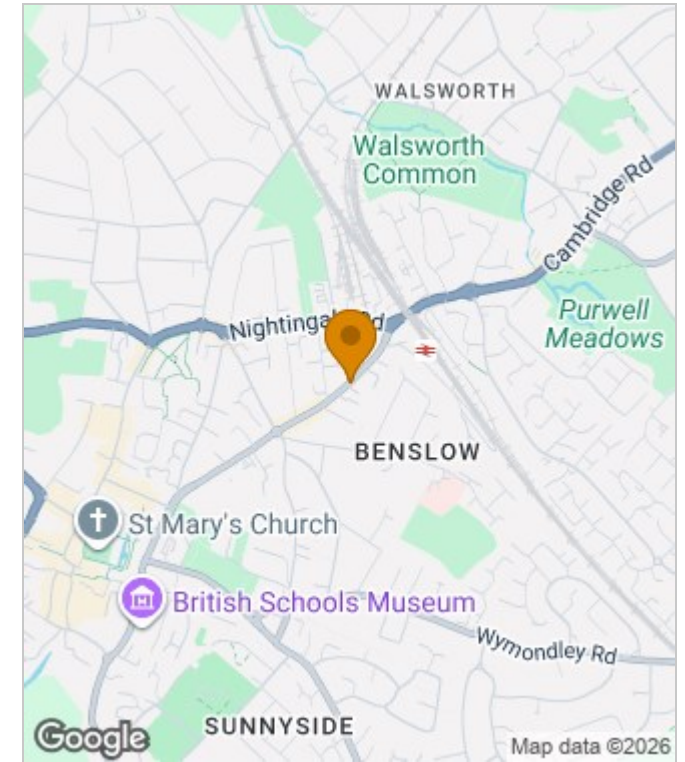
**Council Tax Band: B**  
**Floor Area: 600.00 sq ft**  
**EPC Rating: B**  
**Tenure: Leasehold**



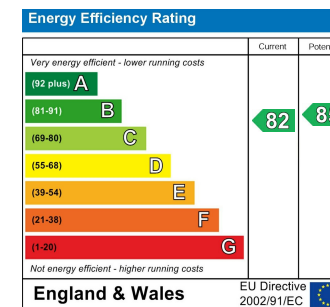
## Floor Plans



## Area Map



## Energy Performance Graph



These particulars, whilst believed to be accurate are set out as a general outline only for guidance and do not constitute any part of an offer or contract. Intending purchasers should not rely on them as statements of representation of fact, but must satisfy themselves by inspection or otherwise as to their accuracy. No person in this firm's employment has the authority to make or give any representation or warranty in respect of the property.