

oakheart



£230,000

Asking Price

Hill Court, Chelmsford



Discover modern urban living at its finest with this beautifully presented first-floor apartment on Victoria Road in the heart of CM1, Chelmsford. Positioned just moments from Chelmsford City Centre and the bustling railway station, this home offers unbeatable convenience and style.

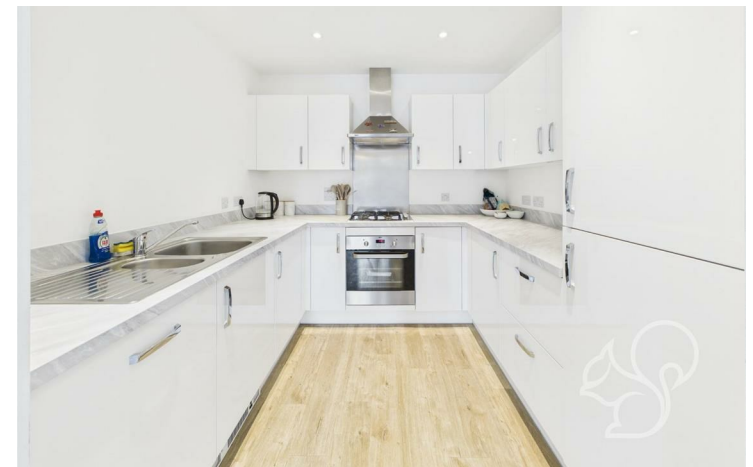
Step inside to find a welcoming hallway that leads into a bright and spacious open-plan kitchen and dining area—perfect for both relaxed evenings and entertaining friends. Generous

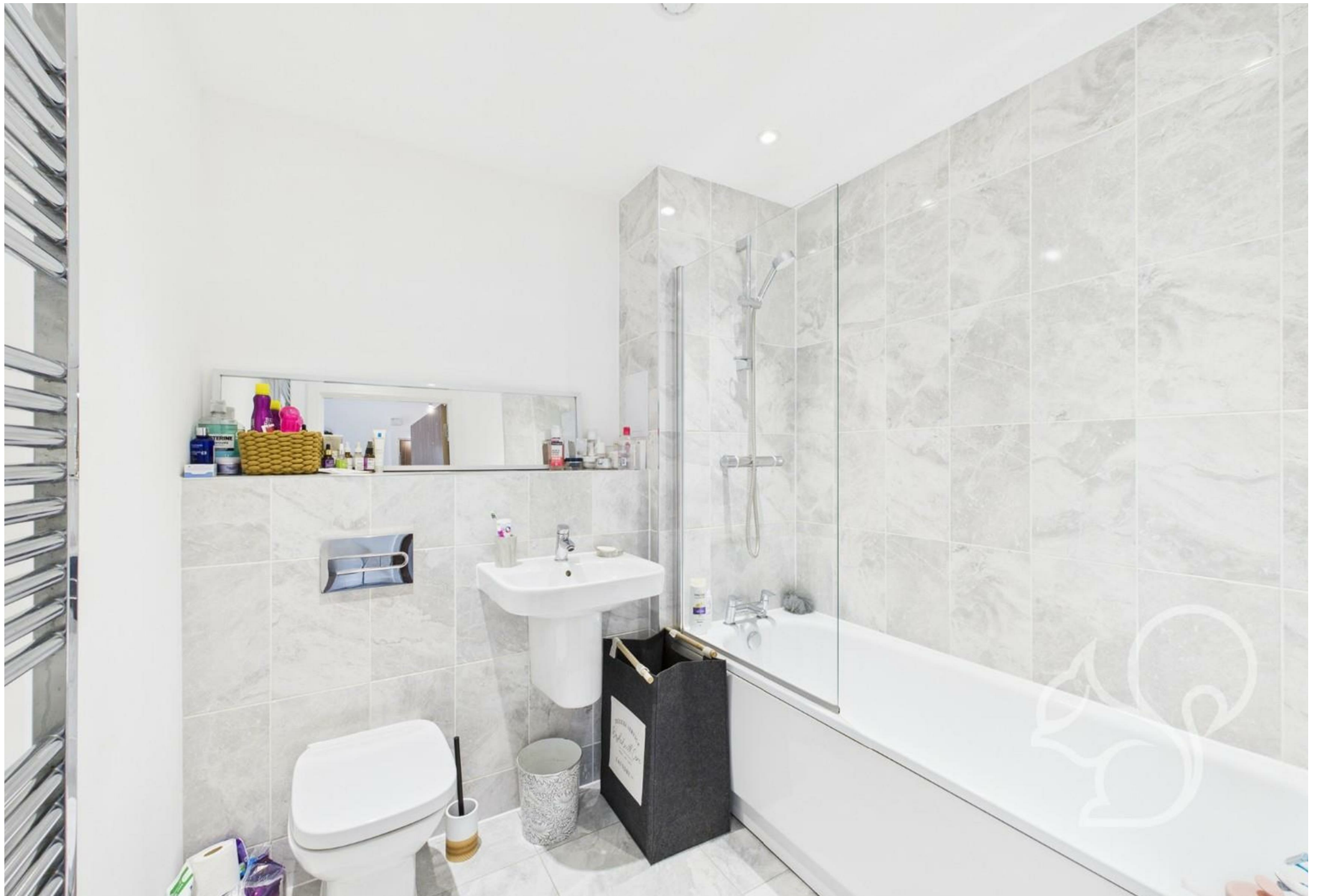
French doors open onto a private balcony, inviting you to enjoy your morning coffee or unwind in the fresh air, all while soaking in the vibrant atmosphere of the city below.

The well-proportioned master bedroom provides a serene retreat, with plenty of space for personal furnishings and relaxation. Adjacent to the bedroom, a contemporary family bathroom offers both style and practicality, creating a refreshing space for your daily routine.

Designed with modern living in mind, this apartment features ample built-in storage throughout, helping you keep your home organised and clutter-free. The electric-fired central heating system ensures year-round comfort, making every day feel cozy and inviting.

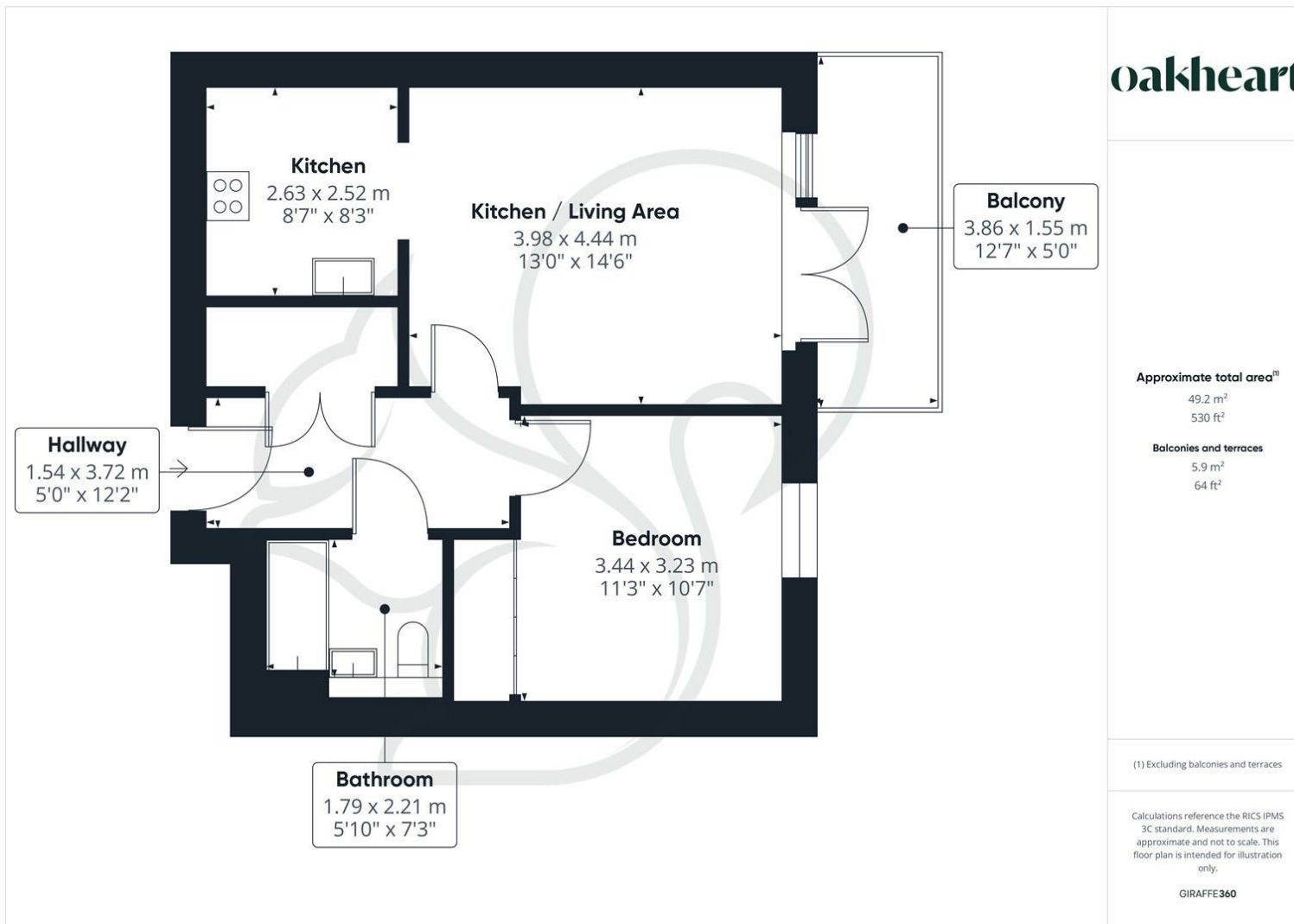
Ideal for first-time buyers or anyone seeking a stylish home in a thriving location, this Victoria Road apartment is a rare find. Don't miss your chance to make this remarkable property your own.












Local Authority:
Chelmsford District Council

Tenure:
Leasehold

Council Tax Band:
C

Energy Efficiency Rating		
	Current	Potential
Very energy efficient - lower running costs		
(92 plus) A		
(81-91) B	84	84
(69-80) C		
(55-68) D		
(39-54) E		
(21-38) F		
(1-20) G		
Not energy efficient - higher running costs		
England & Wales	EU Directive 2002/91/EC 	

Agents Note: Whilst every care has been taken to prepare these particulars, they are for guidance purposes only. All measurements are approximate and are for general guidance purposes only and whilst every care has been taken to ensure their accuracy, they should not be relied upon.

Oakheart Chelmsford
01245 800181
chelmsford@oakheart.co.uk
20 Victoria Road, Chelmsford, Essex, CM1 1PA

oakheart