



ALTON
2 MURRAY DRIVE, CRIEFF, PH7 3DG

IrvingGeddes
W.S. • Solicitors • Estate Agents

ALTON, 2 MURRAY DRIVE, CRIEFF, PH7 3DG

Irving Geddes are delighted to offer for sale this spacious 3/4 bedroom semi-detached family villa located in a sought after mature residential area within the ever popular Perthshire town of Crieff. Enjoying an enviable location, a short walk to the Crieff Hydro Hotel grounds and woodland walks of Knock Hill, & in easy reach of the town centre, the property is set within good sized garden grounds, enjoys off-street parking, single detached garage, DG & GCH.

A well-proportioned layout set over two floors and comprising on the ground floor; ENTRANCE VESTIBULE with W.C. off, HALL with under-stairs storage, LOUNGE with bay window, DINING ROOM/BEDROOM FOUR & BREAKFASTING KITCHEN with walk-in larder and external door. The upper floor has a landing with large walk-in storage and W.C. off, family SHOWER ROOM, and THREE BEDROOMS (the master with bay window and attractive outlook).

The south-west facing front garden has been landscaped and is full of mature plants, shrubs and hedging. There is a paved patio, area of grass, planted beds, attractive retaining wall, with off-street parking to the side. There is a single garage, timber shed and a further area of lawn to the rear.

A fine family home in a prime location. Presented in move-in condition and offering scope for further development/extension.

Video Walkthrough <https://my.matterport.com/show/?m=uAmW88gfaTh>

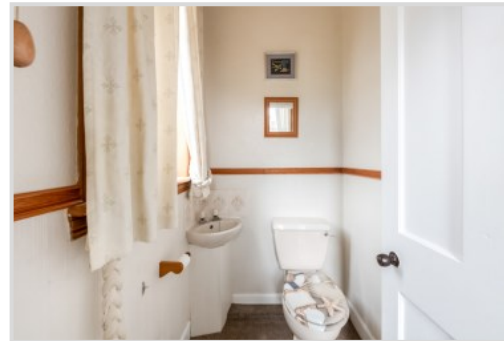
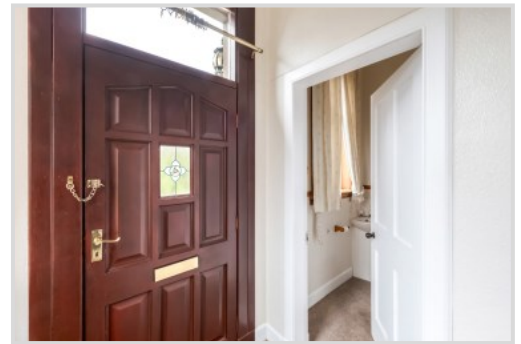
Energy Performance D (58). Council Tax Band E

Viewing Strictly by appointment through Irving Geddes on 01764 653771.

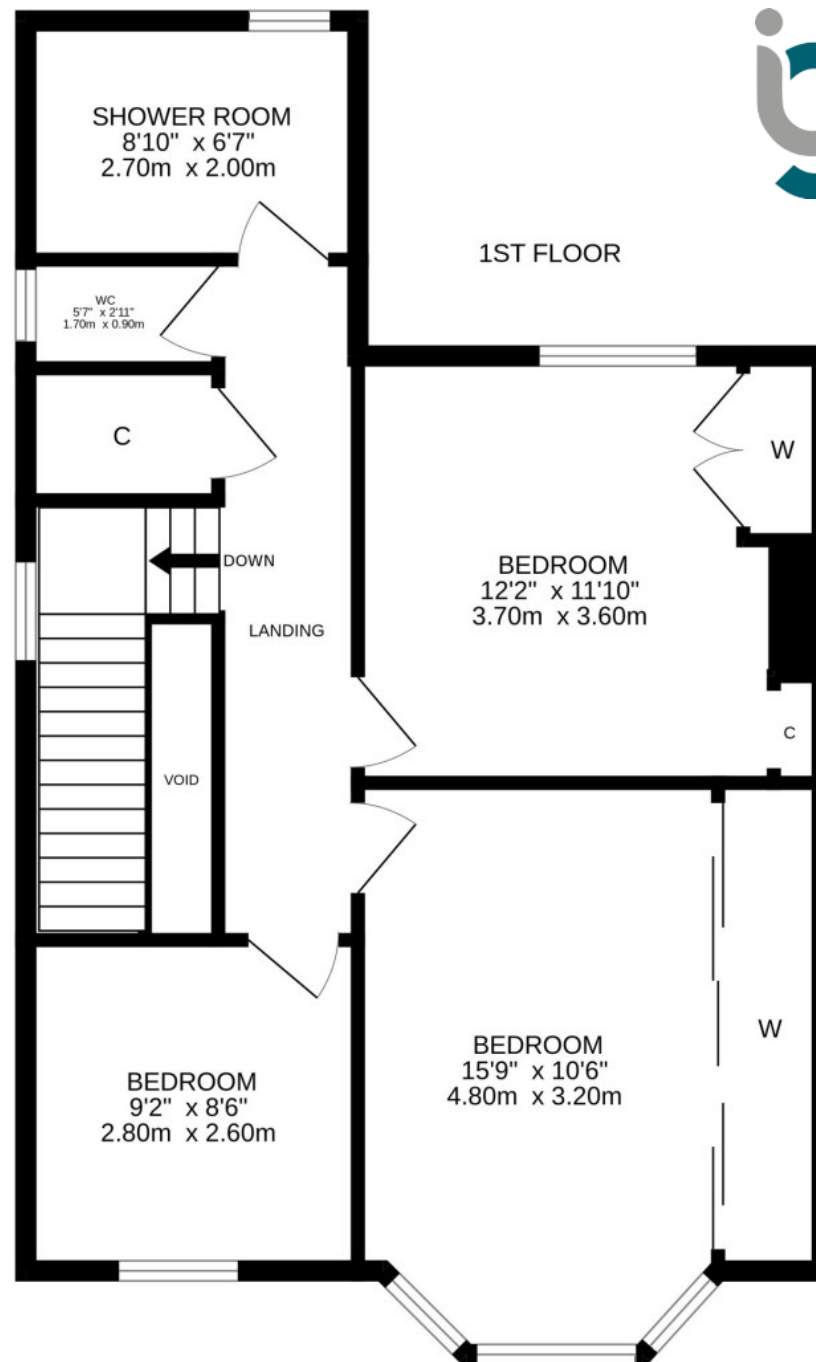
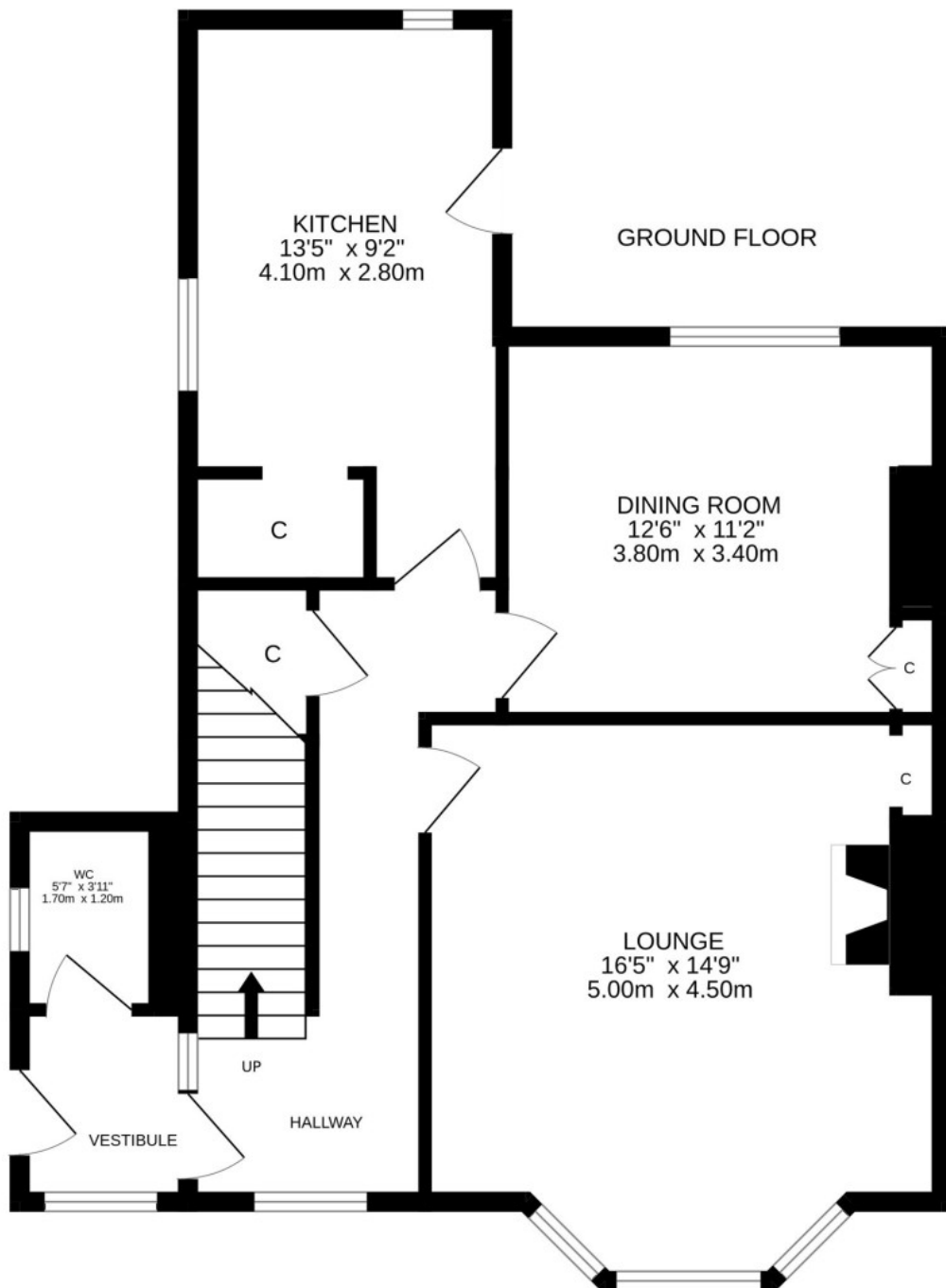












These particulars are believed to be correct, but their accuracy is not guaranteed and they do not form part of any contract. All measurements are approximate only.