



15 Ash Grove, Radlett
WD7 9FE
75% Shared Ownership £266,250

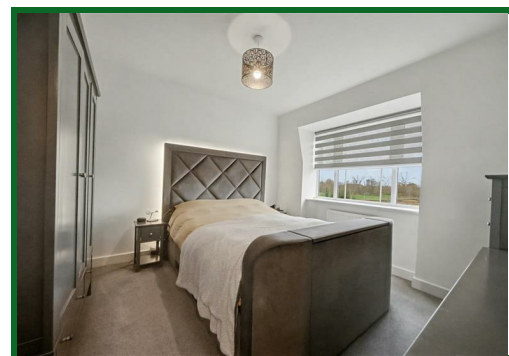
75% Shared Ownership Shenley Estates are delighted to offer for sale, this second floor, two double bedroom apartment located within the ever popular "Harperbury Park" Development. These apartments are sought after as they offer generous living space in a lovely setting.

There is 120 years left on the original 125 year lease, and we are offering for sale a 75% share at £266,250 which is then supplemented with a monthly rent of £288.28

Built by "Bloor Homes" in 2020, this spacious flat benefits from an open plan living/dining/kitchen area, two sizeable double bedrooms and a bathroom. The property also benefits from being well maintained, has ample storage and access to a communal garden to the rear as well as an allocated parking bay and bike shed.

This bright, airy apartment would suit first time buyers and downsizers alike. Immediate viewing is highly recommended.

Additional Monthly Costs
Service Charge: £106.28



Entrance Hall

Lounge Diner

19'4 x 10'3 (5.89m x 3.12m)

Kitchen

8'2 x 7'5 (2.49m x 2.26m)

Bedroom One

10'8 x 11'3 (3.25m x 3.43m)

Bedroom Two

10'1 x 9'1 (3.07m x 2.77m)

Bathroom

Communal Garden

Parking

One allocated bay in the communal car park

