

# 14a Nightingales

Bishop's Stortford

A light filled and spacious one bedroom apartment sat close to Bishop's Stortford station. Filled with scope to add your own stamp, this is a great place to call home.

Council Tax band: B

Tenure: Leasehold

- Spacious light filled apartment
- Ideal first time buy
- One double bedroom
- Allocated parking
- Close to Bishop's station & town centre



**Entrance Hallway**

**Living / Dining**

23' 0" x 16' 5" (7.00m x 5.00m)

**Kitchen**

10' 10" x 7' 3" (3.30m x 2.20m)

**Bedroom**

14' 1" x 9' 2" (4.30m x 2.80m)

**Bathroom**

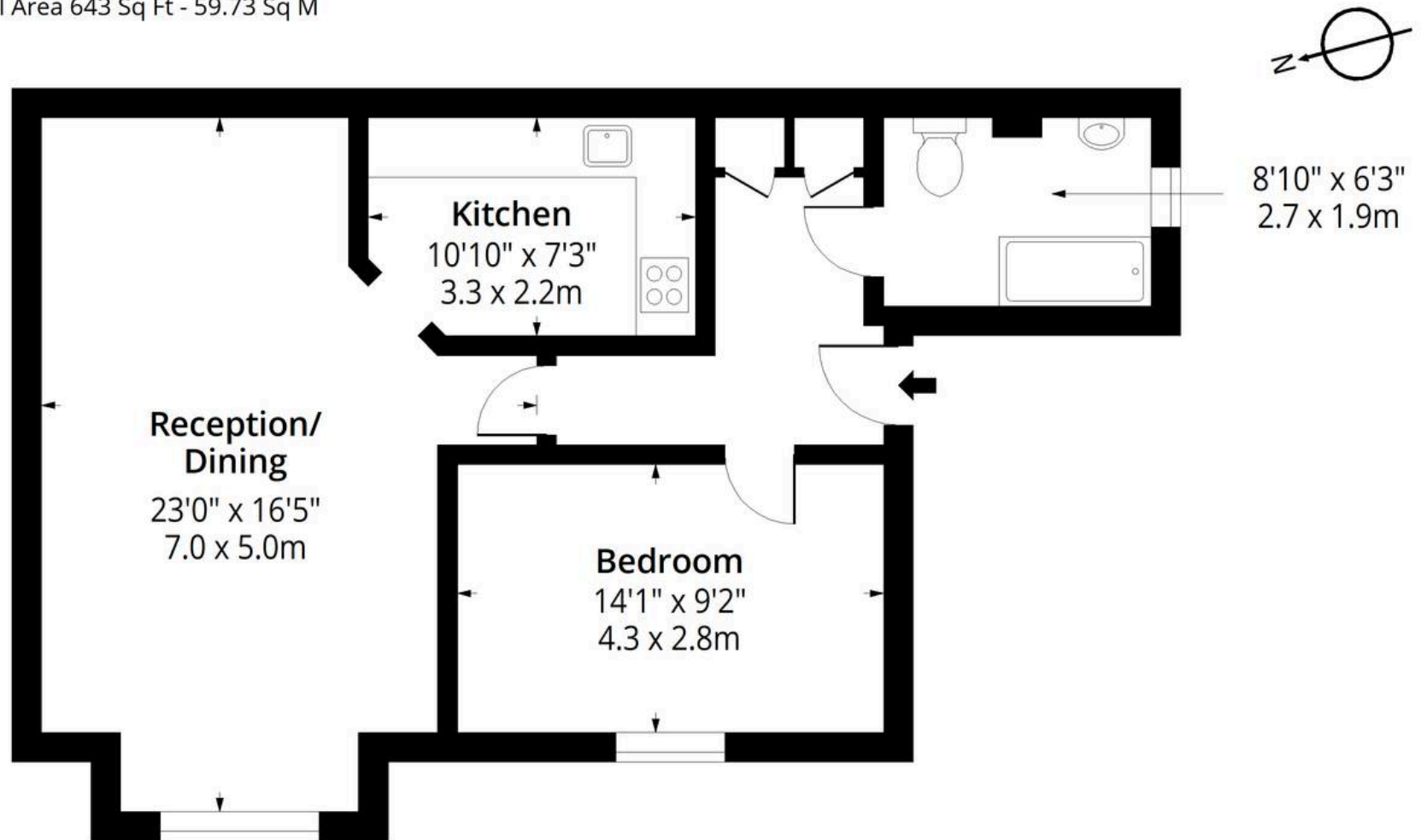
8' 10" x 6' 3" (2.70m x 1.90m)





# Nightingales CM23

Approx. Gross Internal Area 643 Sq Ft - 59.73 Sq M



## Second Floor

Floor Area 643 Sq Ft - 59.73 Sq M



Measured according to RICS IPMS2. Floor plan is for illustrative purposes only and is not to scale. Every attempt has been made to ensure the accuracy of the floor plan shown, however all measurements, fixtures, fittings and data shown are an approximate interpretation for illustrative purposes only. 1 sq m = 10.76 sq feet.

Date: 12/6/2026