



COUNTRY  
HOLMES

## 24 Shelden Fold, Gamesley

£180,000

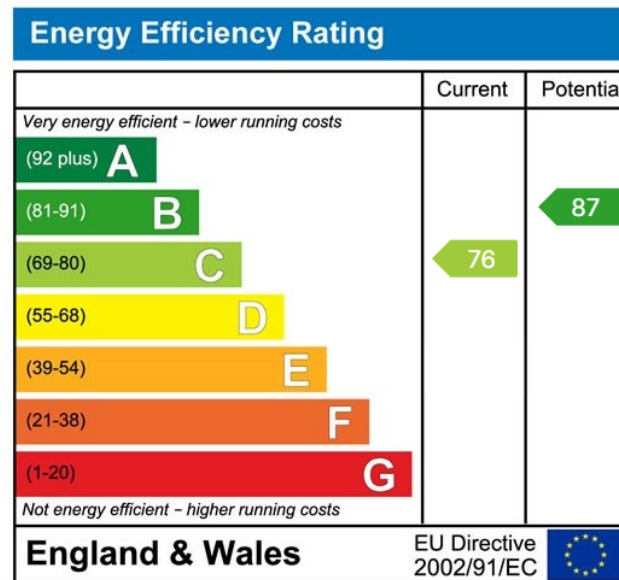
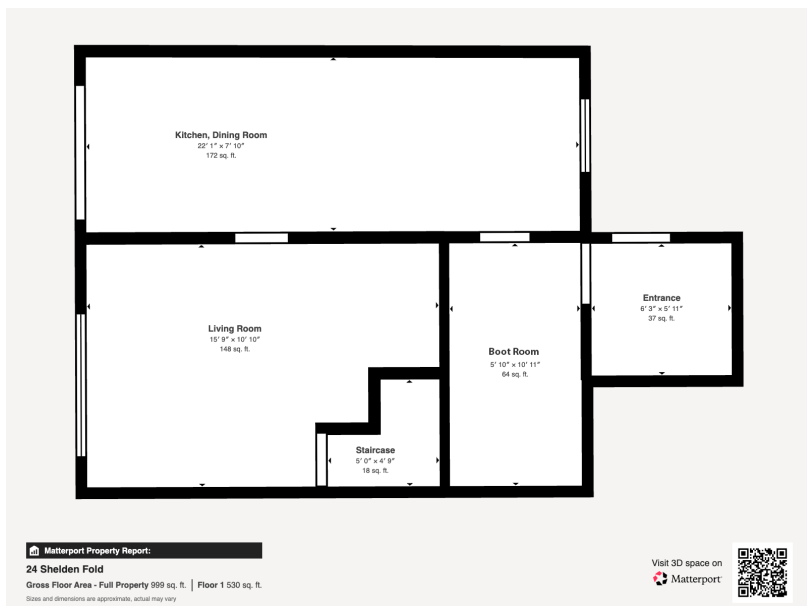
🛏 3 🚿 1 🚗 1



- Immaculately presented three-bedroom terraced home
- Finished to a high standard throughout
- Stylish lounge with herringbone flooring and garden views
- Three spacious double bedrooms
- Contemporary family bathroom with quality fittings
- Beautifully landscaped south-facing rear garden
- Pergola with roller roof, decking area, and low-maintenance lawn
- Additional storage space currently used as a home gym
- Convenient location close to local amenities and transport links
- Ideal for first-time buyers or growing families



Beautifully presented three-bedroom terraced home, finished to a high standard throughout and featuring a stunning south-facing landscaped garden. The property offers a modern kitchen diner, stylish lounge, three double bedrooms, and a contemporary family bathroom. Ideally located close to local amenities and transport links, it's perfect for first-time buyers or families seeking a move-in-ready home.



01457 761310 | glossop@countryholmes.co.uk | www.countryholmes.co.uk  
 18 High Street West, Glossop, Derbyshire, SK13 8BH