



## Farm Lane, SW6

**£980** Per week

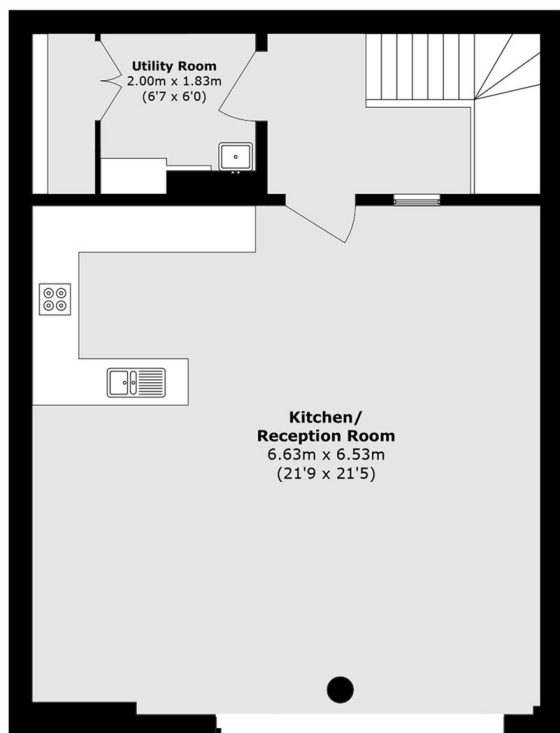
A beautifully maintained, split level apartment in the highly sought after Landau Development. The property features two large double bedrooms, two bathrooms, a spacious open plan kitchen living area and a private garden patio.

The Landau development is in the heart of Fulham just moments away from the local amenities on Fulham Road and transport links of both Fulham Broadway West Brompton Station.

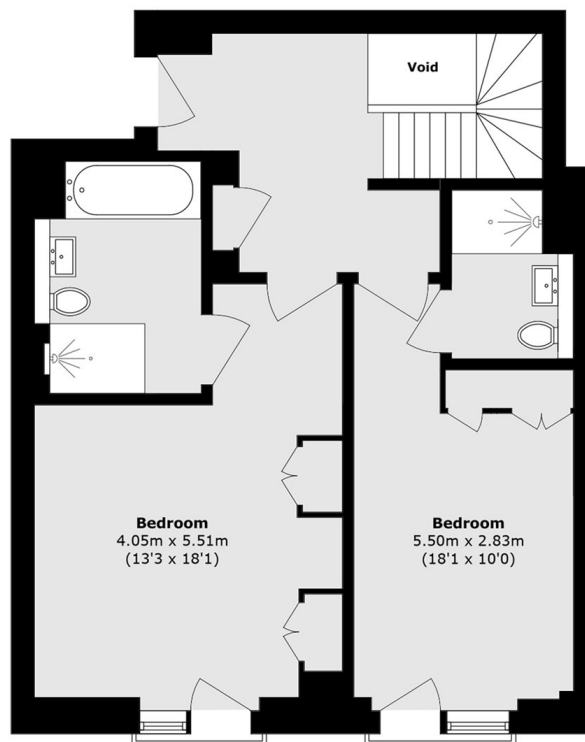
### Features

- Concierge
- Residents Gym
- Underground Parking
- Two Ensuite Bathrooms
- Underfloor Heating
- Open Plan Kitchen

# Farm Lane, Fulham, SW6



**Lower Ground Floor**



**Ground Floor**

Total area (approx.): 114.7 sq. m (1234.6 sq. ft)