



## Newton Place, E14

£525,000

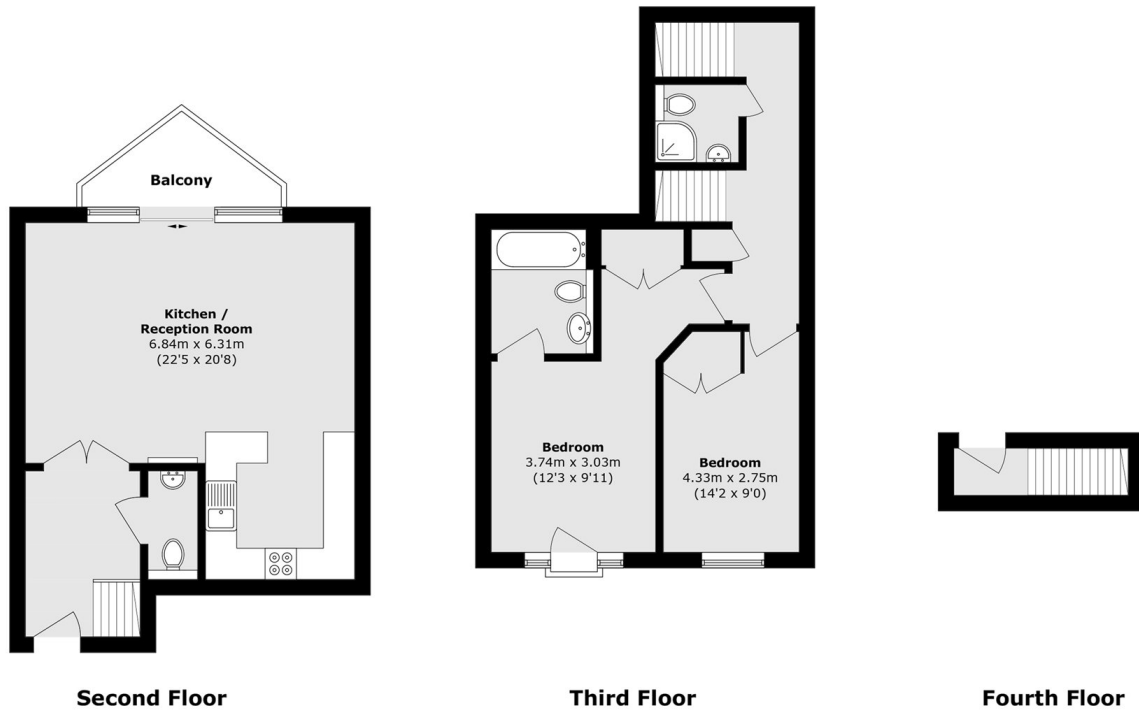
Presented in immaculate condition, this spacious two bedroom apartment is arranged over two floors and extends to over 1,000 sq. Ft. The property features a private balcony with river views, a refitted kitchen and bathrooms, covered allocated parking, access to a residents' gym and a 24-hour concierge service.

The property benefits from excellent transport links, including the DLR, Jubilee line, Elizabeth line, Thames Clipper river service and a range of bus routes, providing convenient access across London. Canary Wharf is also nearby, offering a wide selection of shops, restaurants and leisure facilities, while the Thames Path and The O2 provide further options for riverside walks and entertainment.

### Features

- 1033 Square Feet
- Gated Riverside Development
- Secure Allocated Parking
- Private Balcony
- Concierge Service
- Residents Gym

# Newton Place, London, E14



Total area (approx.): 96.0 sq. m (1033.3 sq. ft)

Balcony area (approx.): 4.2 sq. m (45.2 sq. ft)