



# New Road Little Burstead, Billericay, CM12 9TS Guide Price £775,000

\*\* £775,000 - £800,000 \*\*

Welcome to your dream home! This charming detached bungalow is a new home and it is absolutely immaculate.

The bungalow boasts a beautifully designed reception room. This versatile space could become your family's cozy hub for movie nights, or a classy area for entertaining guests. Its inviting atmosphere will make you feel right at home from the moment you step in.

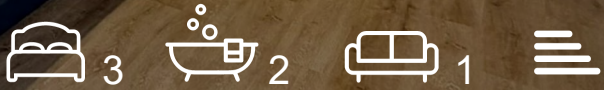
The bungalow also features a delightful kitchen. It's not just any kitchen, mind you. This one comes equipped with a magnificent island and modern appliances which are app-controlled. For those who love to cook, this kitchen is a dream come true. It offers plenty of space to prepare your favourite meals and with the added convenience of modern technology, you'll be whipping up culinary masterpieces in no time!

And let's not forget the bedrooms – all three of them! Each one is spacious, welcoming, and just waiting to become your personal sanctuary. After a long day, there's nothing like retreating to your own private space for some well-deserved rest and relaxation.

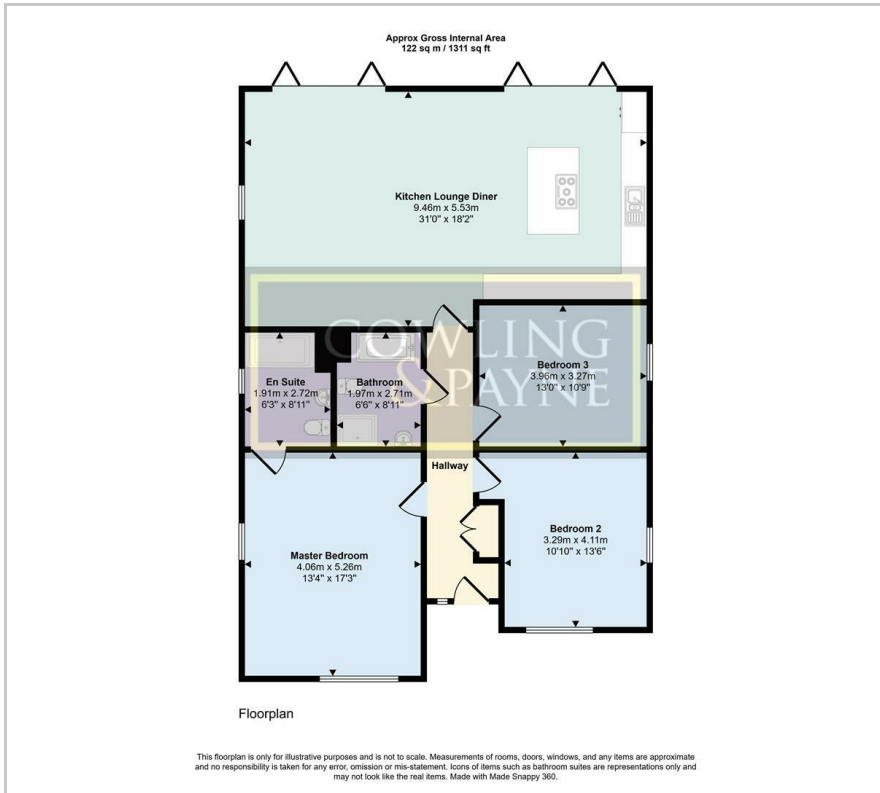
- Brand New
- 10 Year New Home Warranty
- Open plan living area
- 3 Good size bedrooms
- En-suite to master bedroom
- Ample off street parking
- Keys held for viewings
- Generous size gardens
- Secluded location

### Viewing

Please contact our Sales Office on 01268 730707 if you wish to arrange a viewing appointment for this property or require further information.



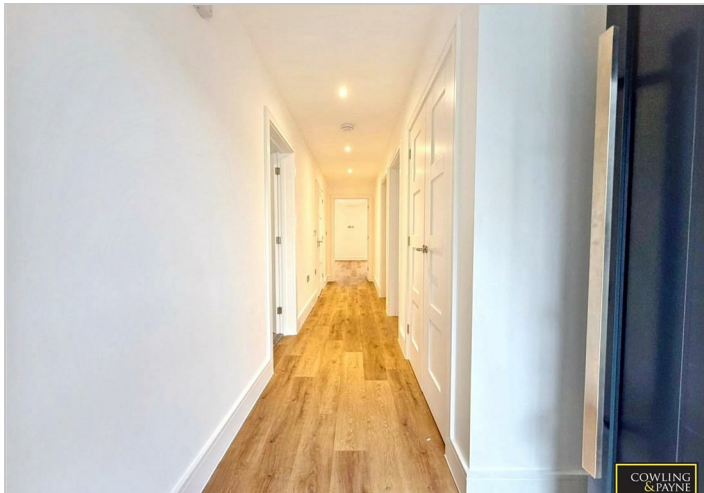
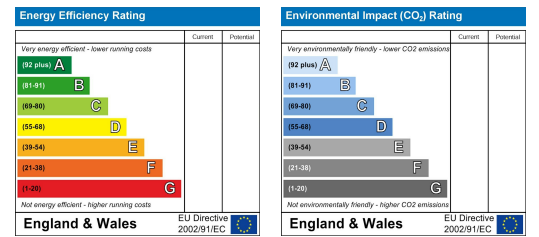
## Floor Plan



## Area Map



## Energy Efficiency Graph



These particulars, whilst believed to be accurate are set out as a general outline only for guidance and do not constitute any part of an offer or contract. Intending purchasers should not rely on them as statements of representation of fact, but must satisfy themselves by inspection or otherwise as to their accuracy. No person in this firm's employment has the authority to make or give any representation or warranty in respect of the property.

2-4 Runwell Road, Wickford, Essex, SS11 7AB

Tel: 01268 730707 Email: [info@cowlingandpayne.co.uk](mailto:info@cowlingandpayne.co.uk) <https://www.cowlingandpayne.co.uk>