



Holland Park, W11

£5,500 Per calendar month

An immaculately presented two double bedroom first floor apartment, enviably positioned along the prestigious Holland Park, set within an attractive double-fronted white stucco period building. The property boasts impressive high ceilings, elegant bay windows, a contemporary integrated kitchen, two modern bathrooms, wooden flooring throughout, and access to beautifully maintained communal gardens.

Holland Park is one of West London's most prestigious and sought-after addresses, ideally positioned for the excellent selection of boutique shops, cafés, restaurants and everyday amenities found in both Holland Park and neighbouring Notting Hill Gate. The property also benefits from excellent transport links, with Holland Park (Central line) and Notting Hill Gate (Central, Circle and District lines) Underground stations both within easy walking distance.

Features

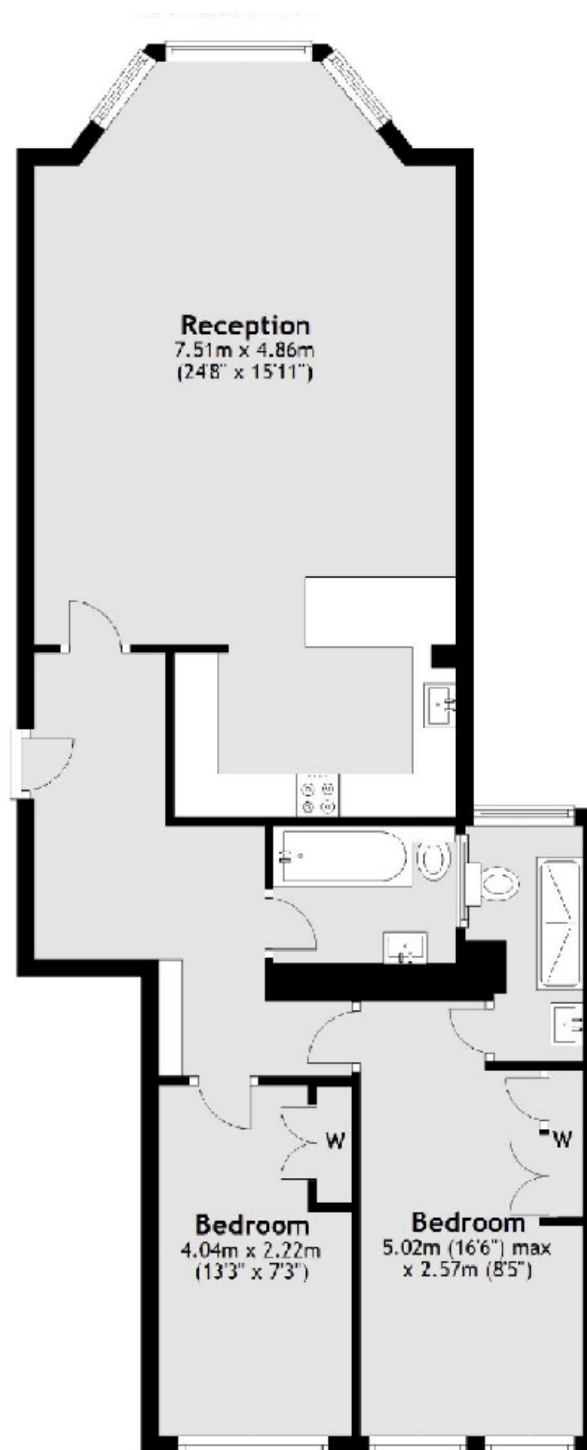
- Two Double Bedrooms
- Two Bathrooms
- First Floor Flat
- 830 Square Foot
- Communal Gardens
- Wooden Flooring
- High Ceilings



Holland Park, W11



Holland Park, London, W11



Total area: approx. 77.1 sq. metres (830.4 sq. feet)