



Gerridge Street, SE1

£460,000

A highly attractive first-floor flat set within the charming Gerridge Court, a delightful 1930s development. The property offers two generous double bedrooms, a fully fitted modern kitchen, a spacious separate reception room, and a contemporary three-piece bathroom. The property has been recently redecorated, benefits from secondary glazing, views of the London Eye and is offered chain free.

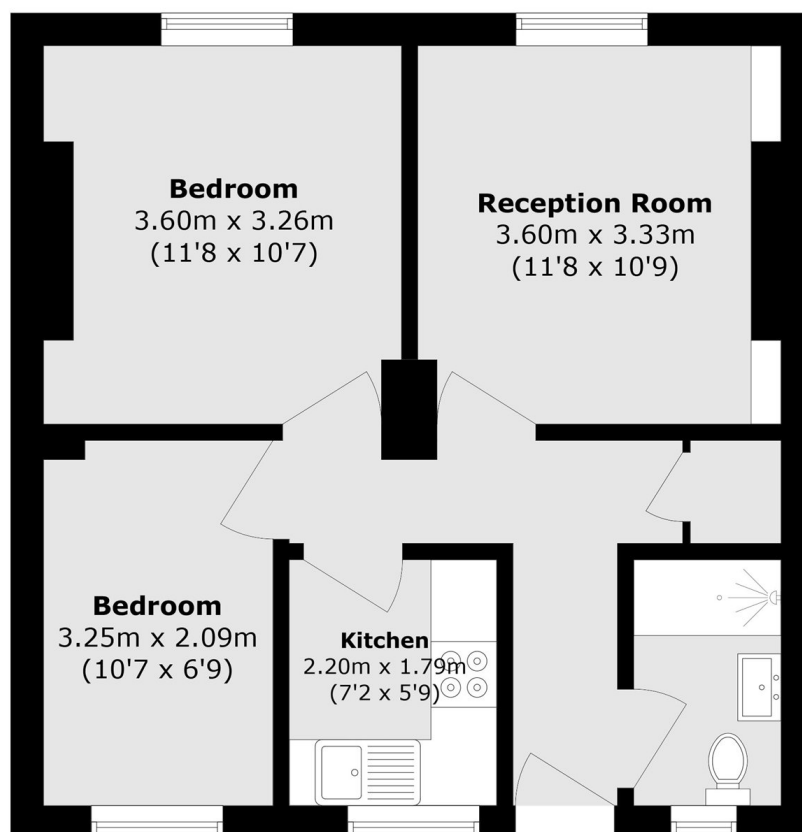
Tucked away on Gerridge Street, the location provides exceptional access to central London. Waterloo Station, with its extensive Underground and mainline services, is within easy walking distance, while Lambeth North (Bakerloo Line) and multiple bus routes along Waterloo Road and Westminster Bridge Road offer excellent citywide connections.

There are numerous amenities and attractions on your doorstep, including the Southbank, the Old Vic, Lower Marsh and the Cut.

Features

- Chain Free Sale
- Sash Windows & High Ceilings
- Secondary Glazing
- Extended Lease
- Communal Courtyard Garden
- Private 1930s Development
- Secure Entry & Bike Storage

Gerridge Street, London, SE1



Total area (approx.): 46.6 sq. m (501.6 sq. ft)