

WESTMORLAND ROAD, NORTH HARROW



Three Bedroom Semi Detached House

Guide Price £675,000

Description

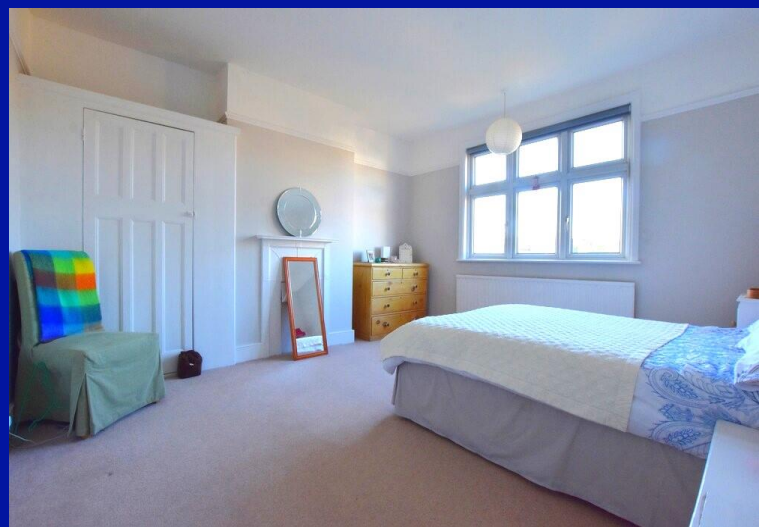
NO CHAIN. Robertson Phillips are proud to present this beautiful three bedroom home onto the market. Set on a quiet residential tree lined road, the properties here rarely become available due to the benefits its location bring to the table. Sitting perfectly for a short stroll to the amenities of the high street and local underground station, but hidden away enough to keep the noise to a minimum. The property itself exudes the feeling of space, with wide hallways and high ceilings and large rooms. The property consists of; Off street parking for two cars, two reception rooms, modern kitchen/diner, first floor two double bedrooms, a single room, and newly installed bathroom. Further benefits include an 80 foot rear garden double glazing, original flooring, worcester combi boiler, locality to the tube station and off street parking.



Location: Situated a short 5 minute stroll from North Harrow High Road, its amenities and the Metropolitan Line Station there, the property is also within the catchment area to outstanding OFSTED rated schools.

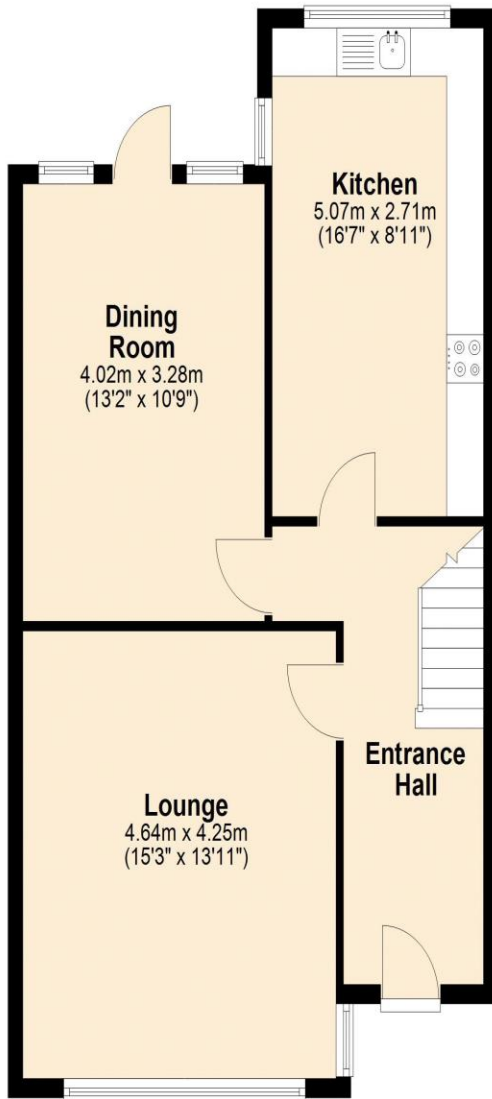


- *Larger Style Three Bedroom Semi-Detached House*
- *Modern Kitchen/Diner*
- *No Upper Chain*
- *Private Garden*
- *Two Reception Rooms*
- *Off Street Parking For Two Cars With Car Charging Point*
- *Newly Installed Bathroom*
- *Sought After Location*



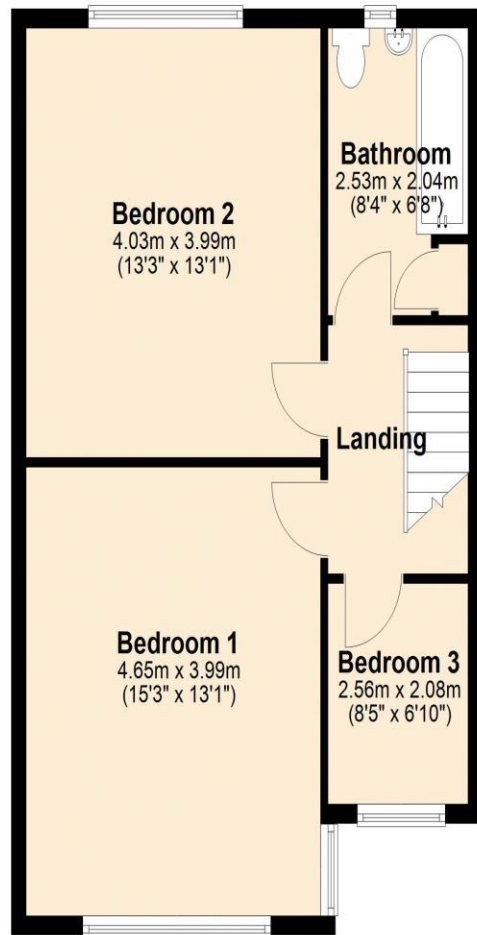
Additional Information

TENURE: FREEHOLD
LOCAL AUTHORITY: LONDON BOROUGH OF HARROW
ENERGY EFFICIENCY RATING: TBC



Ground Floor

Approx. 60.7 sq. metres (652.9 sq. feet)



First Floor

Approx. 52.9 sq. metres (569.0 sq. feet)

Total area: approx. 113.5 sq. metres (1221.9 sq. feet)



We have not sought to verify the legal title of the property, the existence of planning permissions and/or building regulation approvals and have been unable to check the working condition of any services or appliances.

Property layouts are for general guidance and are not drawn exactly to scale. Measurements are taken at the widest points and bays, alcoves, wardrobes etc. may not be shown.