



**Apartment N, Rowton Court, Rowton, Shrewsbury, SY5 9EP**  
£1,000 Per Month





Apartment N, Rowton Court, Rowton, Shrewsbury, SY5 9EP

**£1,000 Per Month**

VIRTUAL TOUR AVAILABLE: An extremely spacious and extensively improved two bedroom ground floor apartment set within this lovely development in the grounds of Rowton Castle, to the east of Shrewsbury. Benefits from beautifully landscaped grounds adjoining unspoilt countryside.

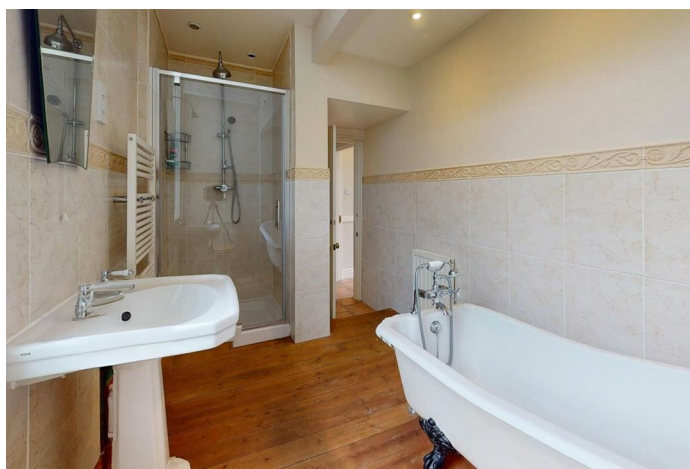
Available: Immediately



## Description

Comprising: Entrance hall, large living room, large refitted kitchen/dining room including range cooker, utility including door to side access, two double bedrooms including fitted wardrobes, bathroom including separate shower, communal gardens with tennis court, residents parking space in main car park, uPVC double glazing, LP gas fired central heating. Window blinds included. EPC E

\*The impressive grounds include a drying area for washing, a BBQ area and a tennis court. The apartments are provided with a communal car park. Within the grounds are Rowton Castle Hotel with an excellent restaurant and an exclusive Country Club providing a swimming pool, gymnasium and other facilities. Rowton Court residents are offered discounted membership.



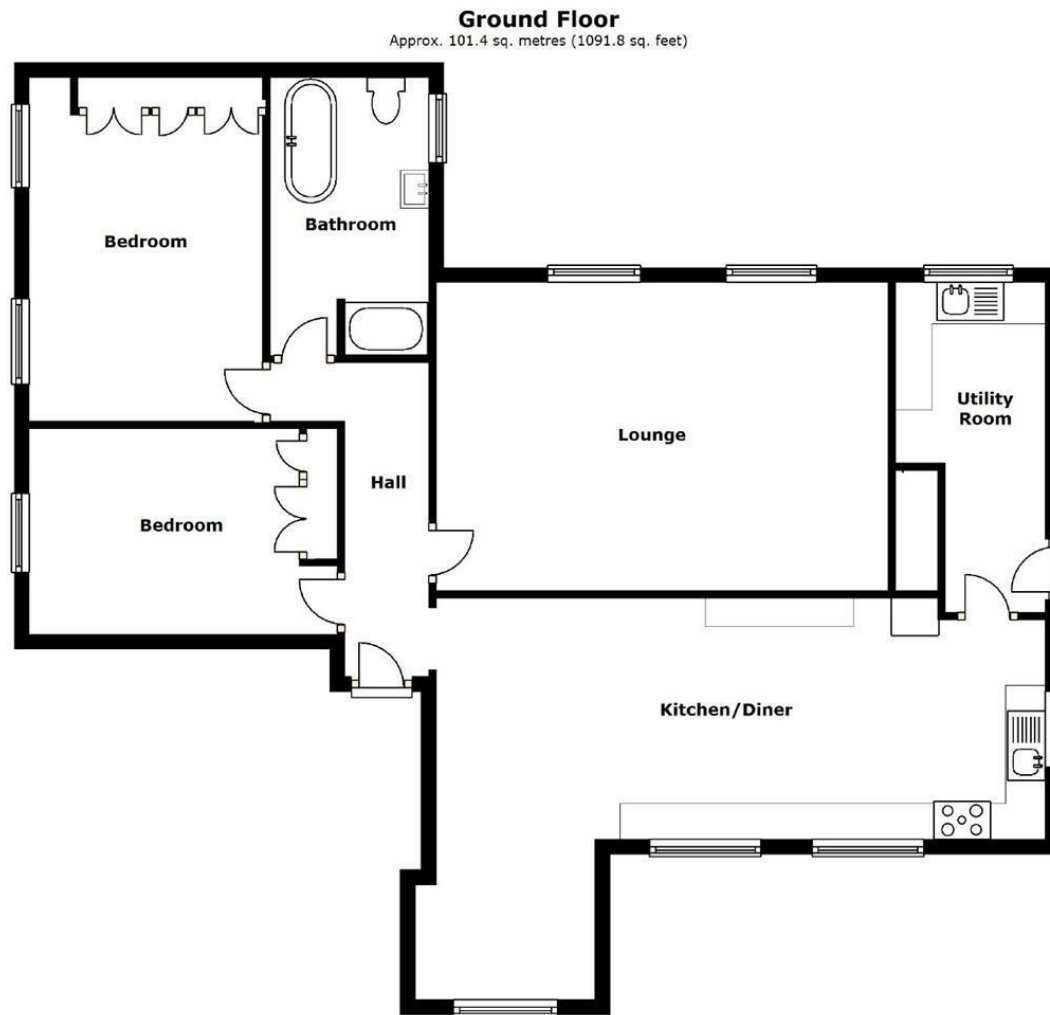
Unfurnished

Council Tax Band: C

Available: 24th January 2026

EPC: E

## Floor Plans



These particulars, whilst believed to be accurate are set out as a general outline only for guidance and do not constitute any part of an offer or contract. Intending purchasers should not rely on them as statements of representation of fact, but must satisfy themselves by inspection or otherwise as to their accuracy. No person in this firm's employment has the authority to make or give any representation or warranty in respect of the property.