



PEVENSEY ROAD, SW17

£840,000

- No Onward Chain
- Stylishly Presented
- 4 Bedrooms, 2 Bathrooms
- Large Sitting Room
- Extended Kitchen / Diner
- South Facing Garden





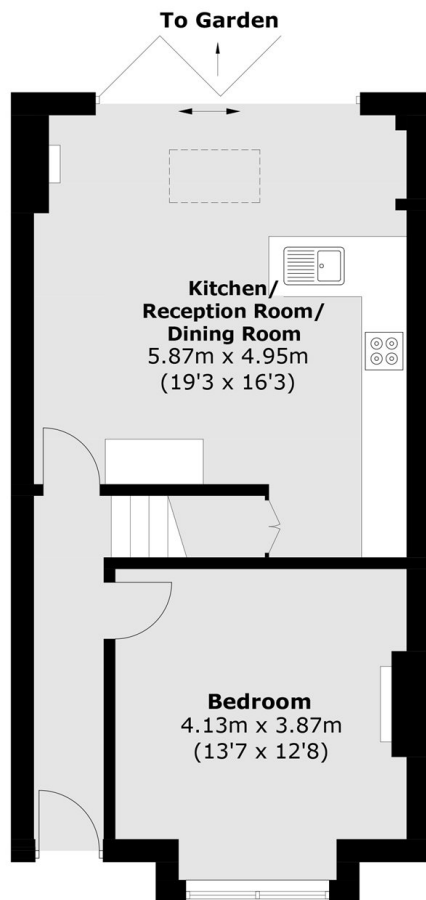
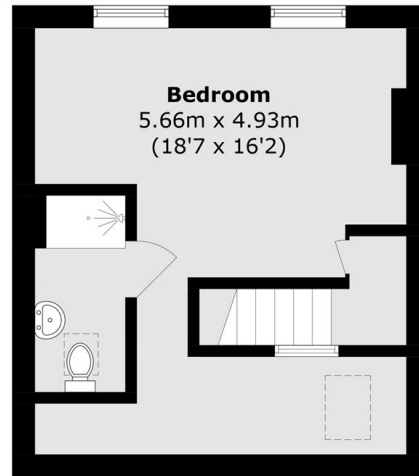
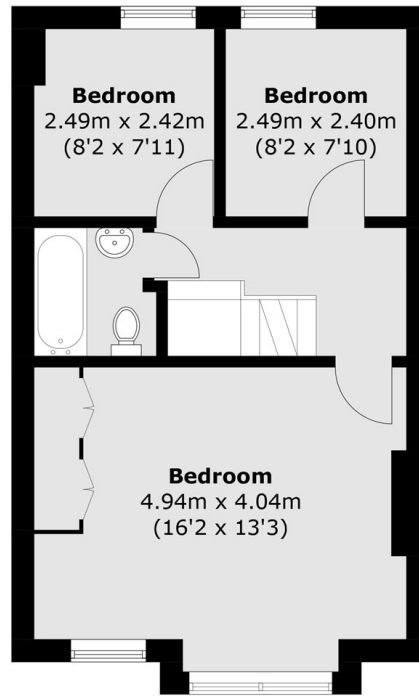
ABOUT THE HOME

A beautiful fully extended four double bedroom, two bathroom terraced home. This period house is finished to a high modern standard and has no onward chain. The property provides approximately 1,272 sq ft of well-proportioned living accommodation. The ground floor comprises a welcoming reception room featuring a fireplace, double-glazed windows, and elegant plantation shutters. To the rear, an impressive extended kitchen/dining room, a space for entertainment and social space. Bi-fold doors open onto a south-facing garden, designed with a combination of paved seating areas. The first floor offers a particularly spacious double bedroom with fitted wardrobes, two further well-proportioned double bedrooms, and a contemporary family bathroom. Occupying the extended loft conversion is the superb principal bedroom suite, complete with a stylish en-suite bathroom and walk-through dressing area.

Pevensey Road is a sought after location, due to its close proximity to Earlsfield, Wimbledon and well regarded local primary schools. Transport links are conveniently located at Tooting Broadway tube station, regular bus services at the end of your road and Earlsfield mainline rail.






Ground Floor

Second Floor

First Floor

Total area (approx.): 118.2 sq. m (1,272.2 sq. ft)

JACKSONS TOOTING

3 Upper Tooting Road, London,
SW17 7TS
Sales: 020 8487 3175
Lettings: 020 8487 3176

Energy Rating: We aim to make our particulars both accurate and reliable. However they are not guaranteed; nor do they form part of an offer or contract. If you require clarification on any points then please contact us, especially if you're traveling some distance to view. Please note that appliances and heating systems have not been tested and therefore no warranties can be given as to their good working order.