



White Post Lane, E9

£400,000

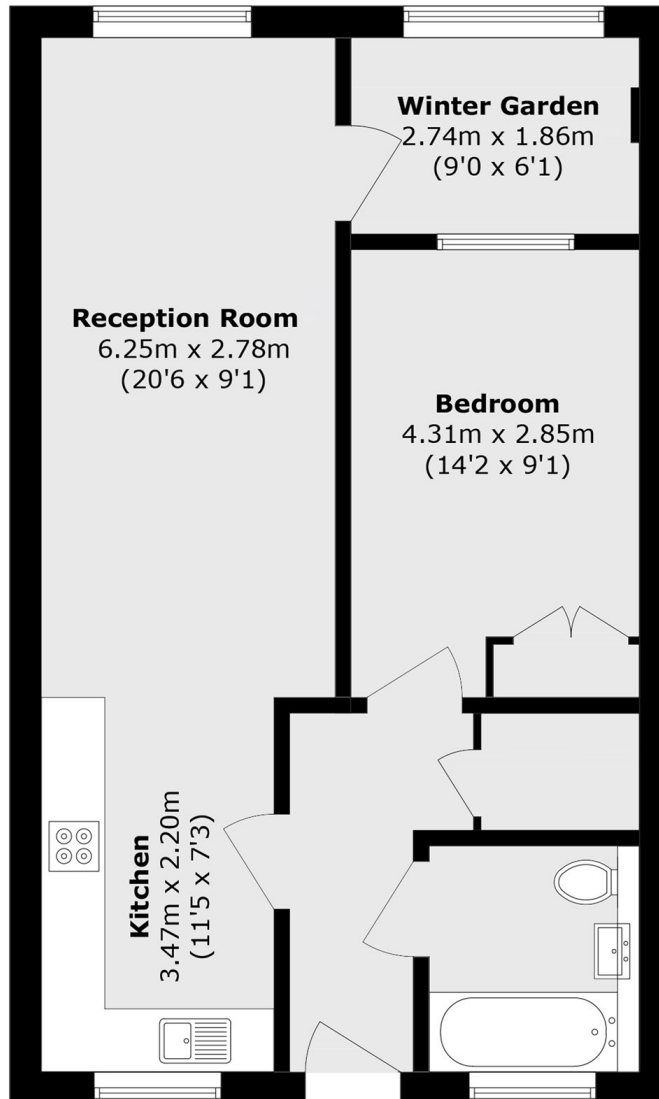
Situated in Hackney Wick, with its excellent selection of bars, cafés, and restaurants, this one-bedroom apartment offers stylish modern living. Set within the desirable Bagel Factory development, residents benefit from a communal roof terrace, bicycle storage, and a fully equipped gymnasium. The property boasts approximately 596 sq ft of well-proportioned living space, comprising a spacious open-plan reception room and contemporary kitchen, which lead to a winter garden.

Additional features include a useful storage cupboard and a modern family bathroom. Ideally located, Hackney Wick Station is within easy reach, while the River Lea is moments away.

Features

- Air Conditioning
- Dishwasher
- Washer/Dryer
- Double Oven/Built-in Microwave
- In-ceiling Speaker
- Under Floor Heating

White Post Lane, LONDON, E9



Total area (approx.): 55.4 sq. m (596.3 sq. ft)