



**Pensford Avenue, TW9**

**£1,850,000**

**Dexters**



## Pensford Avenue, TW9

An impressive and beautifully presented four-bedroom detached family home, ideally positioned just moments from the charming surroundings of Kew Village. Rarely available, this exceptional property boasts generous proportions throughout, offering an abundance of space and natural light to create a truly warm and inviting family residence.

This well-presented property offers four generously sized double bedrooms and sleek, modern bathrooms, making it ideal for families or professionals seeking both space and flexibility. At its heart is a bright and inviting reception room, perfect for everyday living and entertaining, complemented by a stylish, high-spec kitchen/diner that opens seamlessly onto a private garden. The ground floor also benefits from a convenient guest WC. Further highlights include a private garage, off-street parking, and well-proportioned rooms throughout, enhancing the sense of space and comfort. The property also offers excellent potential for future expansion, subject to planning permission, including the possibility of a two-storey side extension.

Pensford Avenue is ideally located in Kew Village, Richmond, near the green spaces of Royal Botanic Gardens Kew and Old Deer Park, with Richmond town centre and riverside close by. Richmond station provides easy access to District Line and South Western rail services.

### Features

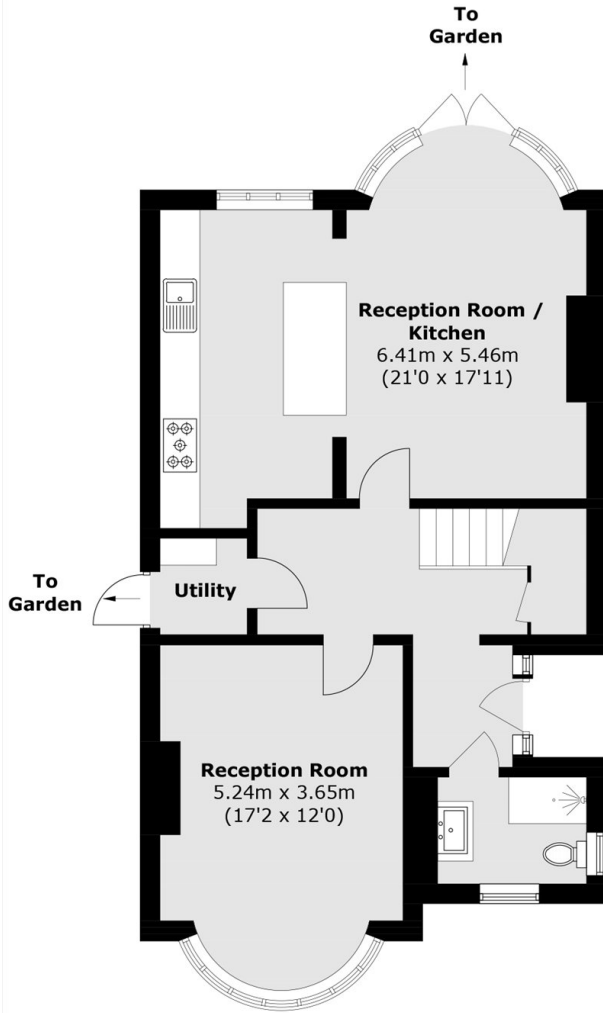
- Detached House
- Four Bedrooms
- Beautiful Rear Garden
- Garage
- Off Street Parking
- No Onward Chain



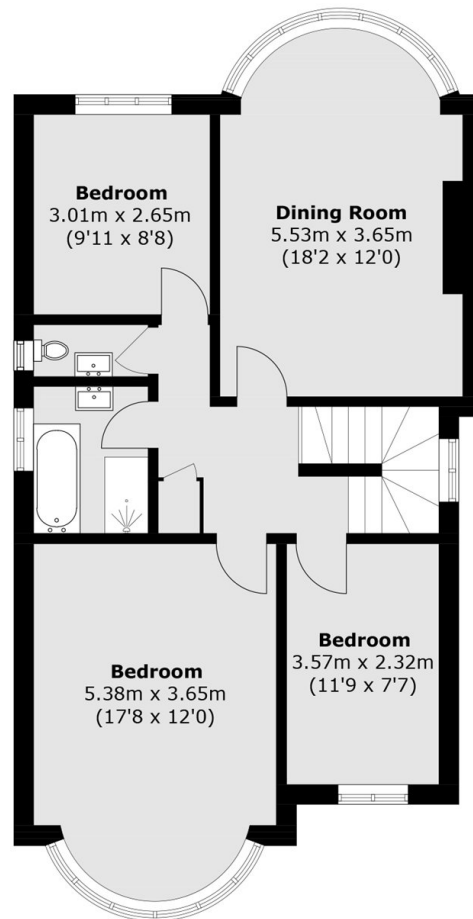




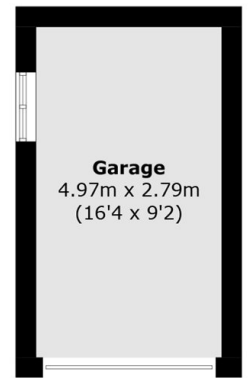
# Pensford Avenue, Kew, TW9



**Ground Floor**



**First Floor**



**Garage**  
4.97m x 2.79m  
(16'4 x 9'2)  
**(Not Shown In Actual  
Location / Orientation)**

Approx Internal Area: 140.1 sq. m (1,508.0 sq. ft)  
Garage: 13.9 sq. m (149.6 sq. ft)