



CLIVEPEARCE
Now you're moving

2 Bedrooms

House - Terraced

Asking Price

£230,000

Located in

St. Austell



www.clivepearceproperty.com



Terras Road

St. Austell | Cornwall | PL26 7DF



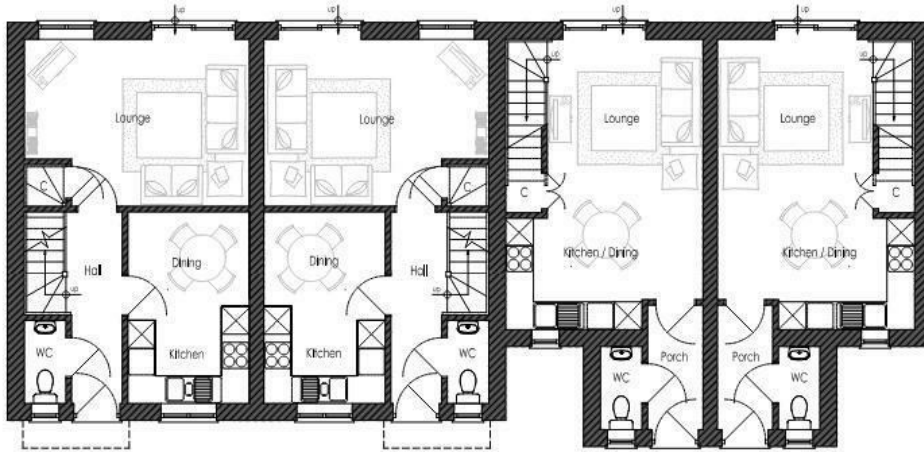
A BRAND NEW two bedroom terraced house with sunny low maintenance garden and parking, located at the edge of St Stephen and walkable into the village and the countryside. Brand new quality home with contemporary interior. Energy efficient design with solar panels and air source heating.

Terras Road

£230,000 Freehold



- Brand new terraced house
- Stylish kitchen and bathroom
- Air source heating with underfloor downstairs
- Enclosed rear garden
- Edge of village location
- Two bedrooms
- Solar panels
- Off street parking
- Lovely country walks nearby



PROPOSED GROUND FLOOR PLAN
SCALE 1:50

Council Tax Band

Local Authority

Agents Note: Whilst every care has been taken to prepare these particulars, they are for guidance purposes only. All measurements are approximate and are for general guidance purposes only and whilst every care has been taken to ensure their accuracy, they should not be relied upon and potential buyers/tenants are advised to recheck the measurements.

Energy Efficiency Rating		
	Current	Potential
Very energy efficient - lower running costs		
(92 plus) A		
(81-91) B		
(69-80) C		
(55-68) D		
(39-54) E		
(21-38) F		
(1-20) G		
Not energy efficient - higher running costs		
England & Wales	EU Directive 2002/91/EC	

31 Lemon Street

Truro

Cornwall

TR1 2LS



CLIVEPEARCE
Now you're moving

hello@clivepearceproperty.com

01872 272622

www.clivepearceproperty.com