



Lords Hill, Coleford, GL16 8BD
£750 Per Month





£750 Per Month

The Town House Lords Hill

Coleford, GL16 8BD

- Separate kitchen and private toilet facilities
- High pedestrian and vehicle visibility
- Ideal for retail or customer-facing businesses
- 1 parking permitted included
- Prime town centre location
- Adjacent to main public car park
- Available for immediate occupation

Prime Town Centre Retail Premises – To Let | Coleford

DEAN ESTATE AGENTS are delighted to offer for long-term commercial rent these recently redecorated premises in a prime trading location in Coleford.

Positioned between Coleford town centre and the Co-op supermarket, and directly adjacent to the town's main public car park, this unit offers superb visibility and strong footfall – ideal for retail businesses looking to establish a presence in a busy, central area.

The interior has been decorated throughout and features modern wooden laminate flooring, offering a clean and professional finish ready for immediate use. The premises also benefit from a separate kitchen area and a private toilet, making it a self-contained and functional space for a variety of uses.

The price £750 + VAT.

We hold the keys for immediate viewings.

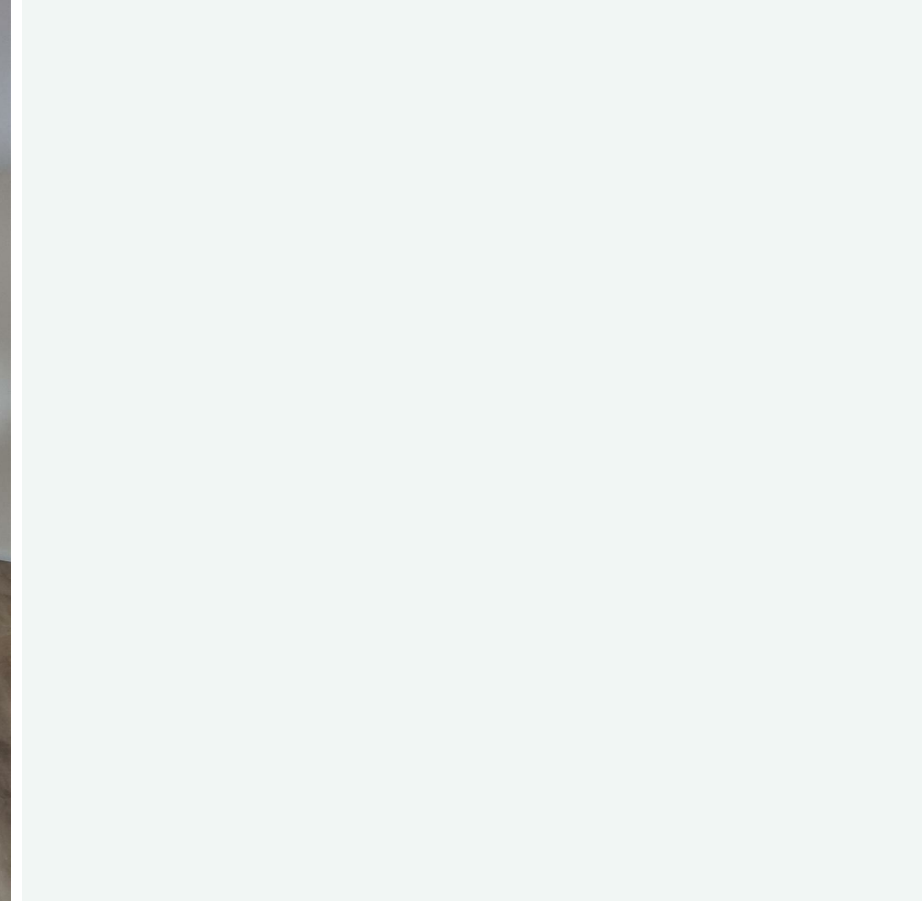
Call 01594 835751 (Option 2) to arrange your viewing today.



Whole office

27'10" x 24'7" (8.48m x 7.49m)





Directions





Floor Plans



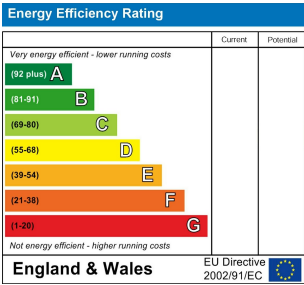
Location Map



Viewing

Please contact our Coleford Office on 01594 835751 if you wish to arrange a viewing appointment for this property or require further information.

Energy Performance Graph



The particulars are set out as a general outline only for the guidance of intended purchasers or lessees, and do not constitute, any part of a contract. Nothing in these particulars shall be deemed to be a statement that the property is in good structural condition or otherwise nor that any of the services, appliances, equipment or facilities are in good working order. Purchasers should satisfy themselves of this prior to purchasing.

