



## Ludwick Mews, SE14

£600,000

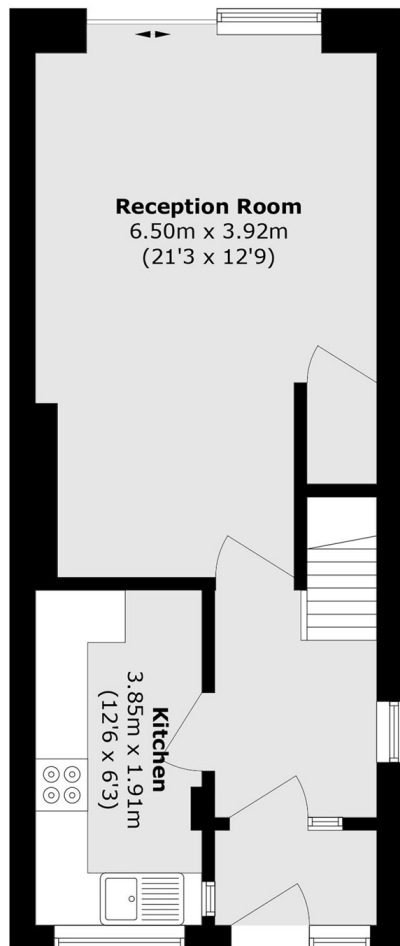
Tucked away in a quiet and desirable mews setting, this beautifully presented three-bedroom end-of-terrace home offers a perfect blend of comfort, style, and practicality. Boasting a bright and spacious layout, the property features a welcoming living area, a well-appointed modern kitchen, and generous bedrooms ideal for family living or flexible home working.

Ludwick Mews is a quiet, tucked-away residential setting, offering a sense of privacy while still being close to the amenities and transport links of New Cross and Brockley.

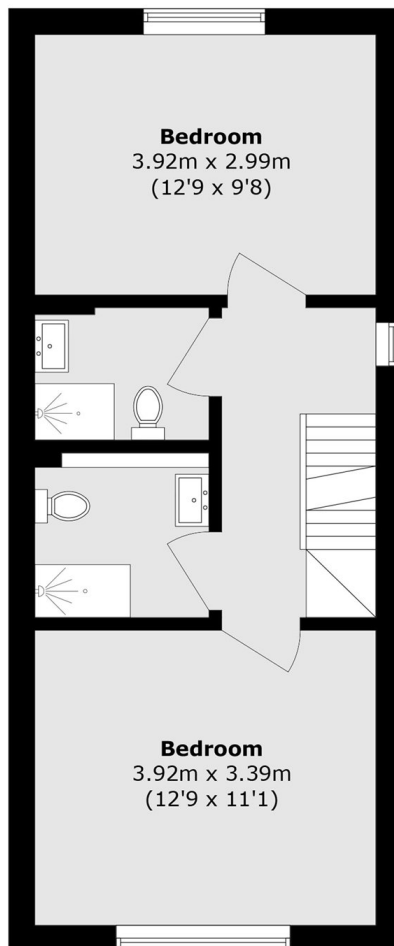
### Features

- Three Bedrooms
- End Of Terrace
- Large Reception Room
- Three Bathrooms
- Amenities Nearby

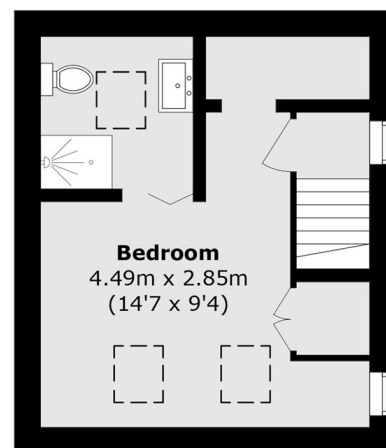
# Ludwick Mews, London, SE14



**Ground Floor**



**First Floor**



**Second Floor**

Total area (approx.): 97.2 sq. m (1046.3 sq. ft)