



Camp View
BRISTOL BS36 1BW

Price:
Asking Price £170,000

Property Features

- One Bedroom Flat
- Shower Room
- Electric Heating
- Off Street Parking
- Good sized Kitchen
- Beautifully Presented



Full Description

This type of property is hard to come by in winterbourne Down. A converted shop into a one bedroom flat, it briefly comprises of a separate living room and kitchen. Good sized double bedroom and a shower room. First to see, will buy amazing home.

LIVING ROOM

12'6" x 10'0"

Double glazed window to front, radiator and doors to:

KITCHEN

15'7" x 6'1"

Double glazed window to front, range of wall and base units with work surface over, integrated fridge, sink with drainer and mixer tap, tiled splash back, integrated oven & hob.

BEDROOM

13'2" x 11'5"

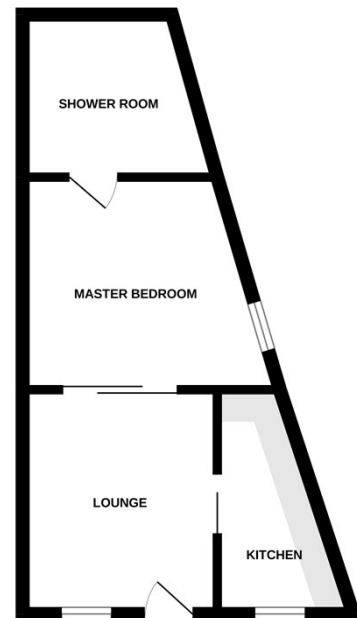
Double glazed window to side, radiator and door to:

SHOWER ROOM

Shower cubicle with electric shower, vanity hand wash basin with mixer tap, low level w/c, extractor and heated towel rail.



GROUND FLOOR



Measurements are approximate. Not to scale. Illustrative purposes only. Made with Metropix ©2022

4 Flaxpits Lane
Winterbourne
Bristol
BS36 1JX

www.aj-homes.co.uk
info@aj-homes.co.uk
01454 252140

Agents Note: Whilst every care has been taken to prepare these sales particulars, they are for guidance purposes only. All measurements are approximate and for general guidance purposes only and whilst every care has been taken to ensure their accuracy, they should not be relied upon and potential buyers are advised to recheck the measurements