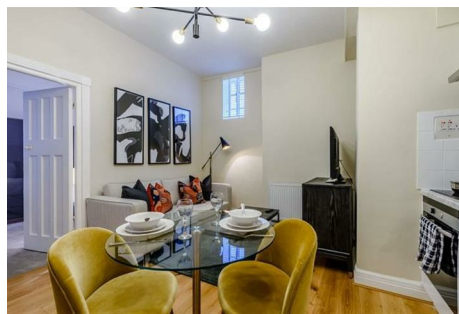


PARKER JAMES

ESTATES

Established since 1995



143, Strathmore Court Park Road London NW8 7HY

- Available now
- Available furnished or unfurnished
- A ported building opposite Regents Park
- Ground Floor apartment
- One bathroom
- This apartment is ideally suited to young professionals or students
- A stone's throw from the University of Westminster & the Royal College of Physicians
- Close to the cafés, restaurants and boutique shops in St John's Wood
- One bedroom
- Must see

£600 Per Week

143, Strathmore Court

Park Road London NW8 7HY



Available Now.

We are pleased to offer this 323 sq ft, ground floor, 1 bedroom 1 bathroom apartment set within a ported building opposite Regents Park.

This apartment is ideally suited to young professionals or students due to its proximity to the West End, as well as a number of top colleges and universities such as the London Business School, University of Westminster and the Royal College of Physicians.

Strathmore Court is located within a 10 minute walk from St John's Wood underground station (Jubilee Line) and Marylebone underground and overground station (Bakerloo Line and national railway). Lords Cricket Ground, along with the large variety of cafés, restaurants and boutique shops in St John's Wood are all easily accessible.



[Directions](#)





Floor Plan

These particulars, whilst believed to be accurate are set out as a general outline only for guidance and do not constitute any part of an offer or contract. Intending purchasers should not rely on them as statements of representation of fact, but must satisfy themselves by inspection or otherwise as to their accuracy. No person in this firm's employment has the authority to make or give any representation or warranty in respect of the property.



48 Warwick Street Soho, London, W1B 5NL
Tel: 020 7287 4244 Email: management@parkerjamesestates.co.uk parkerjamesestates.co.uk

