

TURNERS



Rawnsley Avenue, Mitcham, CR4
£1,400 Per Month

0208 687 9787 | turnersproperty.com | 105 London Road, Morden, Surrey, SM4 5HP

TURNERS





Full Description

A beautifully refurbished and immaculately presented one double bedroom apartment with the added benefit of a balcony, situated just moments from the picturesque Morden Hall Park.

Located within a quiet residential cul-de-sac, the property is conveniently positioned for excellent transport links, including Morden Underground Station (Northern Line) and Mitcham Tram Stop, providing easy access to Wimbledon and Central London. Morden Hall Park, local shops and amenities are all within easy reach.

Early viewing is highly recommended.

A beautifully refurbished and immaculately presented one double bedroom apartment with the added benefit of a balcony, situated just moments from the picturesque Morden Hall Park.

Located within a quiet residential cul-de-sac, the property is conveniently positioned for excellent transport links, including Morden Underground Station (Northern Line) and Mitcham Tram Stop, providing easy access to Wimbledon and Central London. Morden Hall Park, local shops and amenities are all within easy reach.

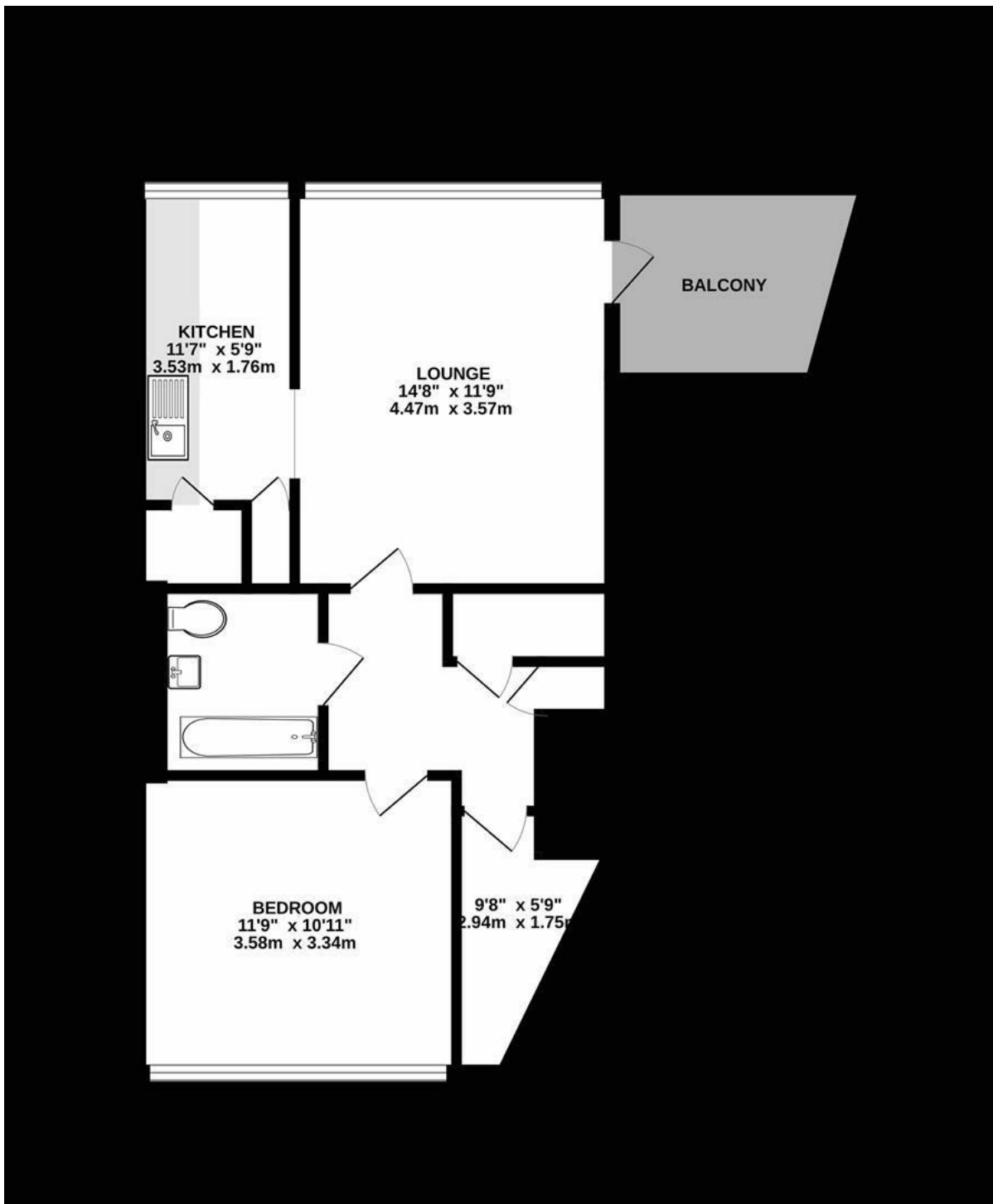
Early viewing is highly recommended.




Key Features

- Recently refurbished
- 1 bedroom
- First floor
- Balcony
- Gas central heating
- Available now
- EPC rating
- Good location





Energy Efficiency Rating		
	Current	Potential
Very energy efficient - lower running costs		
(92 plus) A		
(81-91) B		
(69-80) C		
(55-68) D		
(39-54) E		
(21-38) F		
(1-20) G		
Not energy efficient - higher running costs		
England & Wales	EU Directive 2002/91/EC 	

Rawnsley Avenue, Mitcham, CR4

£1,400 Per Month

0208 687 9787 | turnersproperty.com | 105 London Road, Morden, Surrey, SM4 5HP

