



LANG TOWN  
& COUNTRY

12 Masefield Gardens, Plymouth, Devon, PL5 3HU



# Price £220,000

We are pleased to offer this beautifully presented three-bedroom terraced family home, pleasantly positioned within a quiet residential cul-de-sac, close to all amenities such as schools and local shops.

The property is approached via a level front garden, alongside a small driveway, and is entered through a uPVC constructed porch. An inner door opens into a welcoming hallway, featuring a larger-than-average downstairs cloakroom, two useful storage cupboards, and stairs rising to the first floor.

The ground floor offers a modern open plan living space with a recently fitted kitchen, complete with high gloss base units and matching wall cupboards arranged to three sides with a central breakfast bar, space for a range-style cooker, and additional white goods. A door from the kitchen provides direct access to the rear garden. The spacious dual-aspect open-plan living area, has a clearly defined dining space—ideal for both everyday living and entertaining.

Upstairs, the first-floor hosts three generously sized bedrooms, with both the master and second bedrooms benefiting from built-in wardrobes. There is also a recently refurbished contemporary shower room, comprising a shower cubicle, wash hand basin and W.C.

Externally, the property enjoys a low-maintenance, enclosed rear garden, with a gate providing access to a pleasant, wooded area beyond.

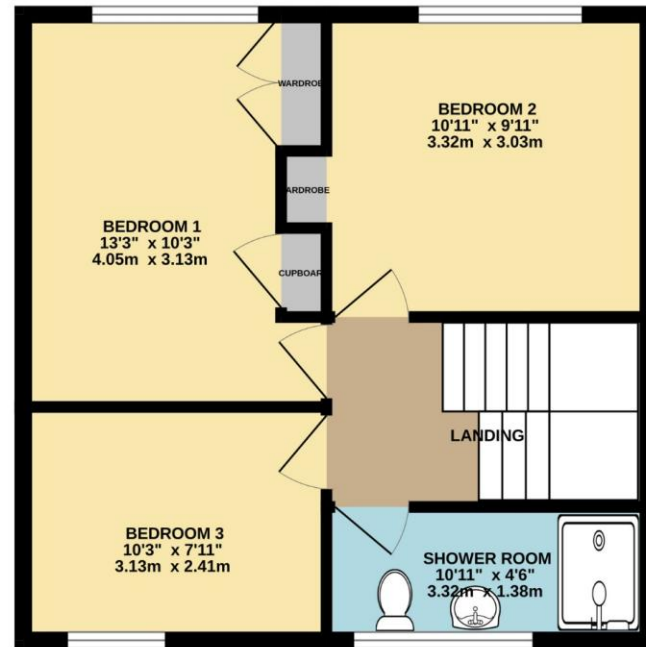
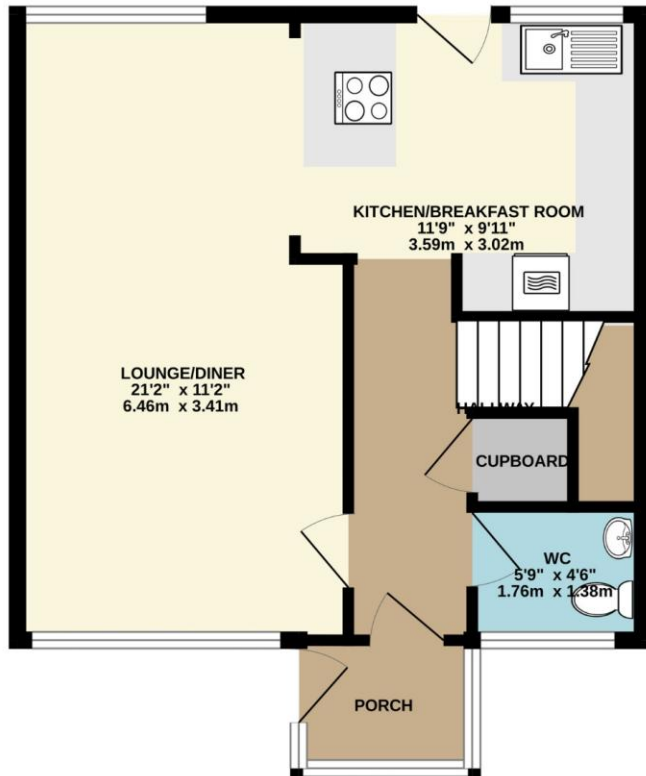
An early viewing is essential to appreciate this beautifully presented family home.

To view this property call Lang Town & Country Estate Agents on **01752 256000**.

[www.langtownandcountry.com](http://www.langtownandcountry.com)







TOTAL FLOOR AREA : 922 sq.ft. (85.6 sq.m.) approx.

Whilst every attempt has been made to ensure the accuracy of the floorplan contained here, measurements of doors, windows, rooms and any other items are approximate and no responsibility is taken for any error, omission or mis-statement. This plan is for illustrative purposes only and should be used as such by any prospective purchaser. The services, systems and appliances shown have not been tested and no guarantee as to their operability or efficiency can be given.  
Made with Metropix ©2026



Lang Town & Country  
6 Mannamead Road  
Plymouth  
PL4 7AA  
Tel: 01752 256000  
Email: [property@langtownandcountry.com](mailto:property@langtownandcountry.com)  
[www.langtownandcountry.com](http://www.langtownandcountry.com)

Lang Town & Country endeavour to ensure the accuracy of property details produced and displayed, we have not tested any apparatus, equipment, fixtures, fittings or services and so cannot verify that they are connected, in working order or fit for purpose. A buyer must check the availability of any property and make an appointment to view before embarking on any journey to see a property.

