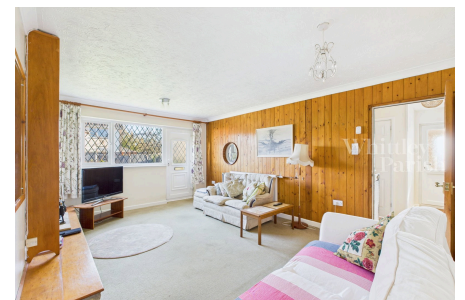


Chestnut Road, Dickleburgh

Guide Price £190,000-£200,000

2 1 1



No onward chain – Taking in peaceful far reaching field views, this two-bedroom semi-detached bungalow offers over 700 square feet of accommodation and is situated in a desirable village location that has a local shop and public house.

Key Features

- Guide Price £190,000-£200,000
- No onward chain
- Tucked away position siding onto open fields
- West facing garden taking in afternoon and evening sun
- Off-road parking space in front of single garage
- Local primary school (with pre-school) rated outstanding as of Sept 2024
- Local amenities including a public house, convenience store and fish & chip shop
- Freehold
- EPC Rating D
- Council Tax Band B

