



Wavertree Court, Mill Hill, NW7

£385,000

A stylish and well-presented one-bedroom mews property arranged over two floors, set within a modern private development just off Mill Hill Broadway.

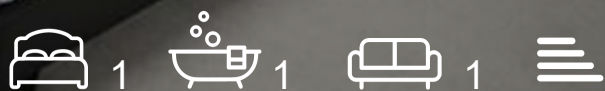
The property offers a bright open-plan kitchen and reception space, ideal for modern living, a generous double bedroom, contemporary bathroom, and a separate guest WC. Further benefits include a private patio garden, perfect for outdoor seating or entertaining.

Ideally positioned moments from the shops, cafés and restaurants of Mill Hill Broadway, as well as Mill Hill Thameslink Station, this home is perfectly suited to first-time buyers, downsizers or investors seeking a well-located and low-maintenance property. Sole Agent. Chain Free.

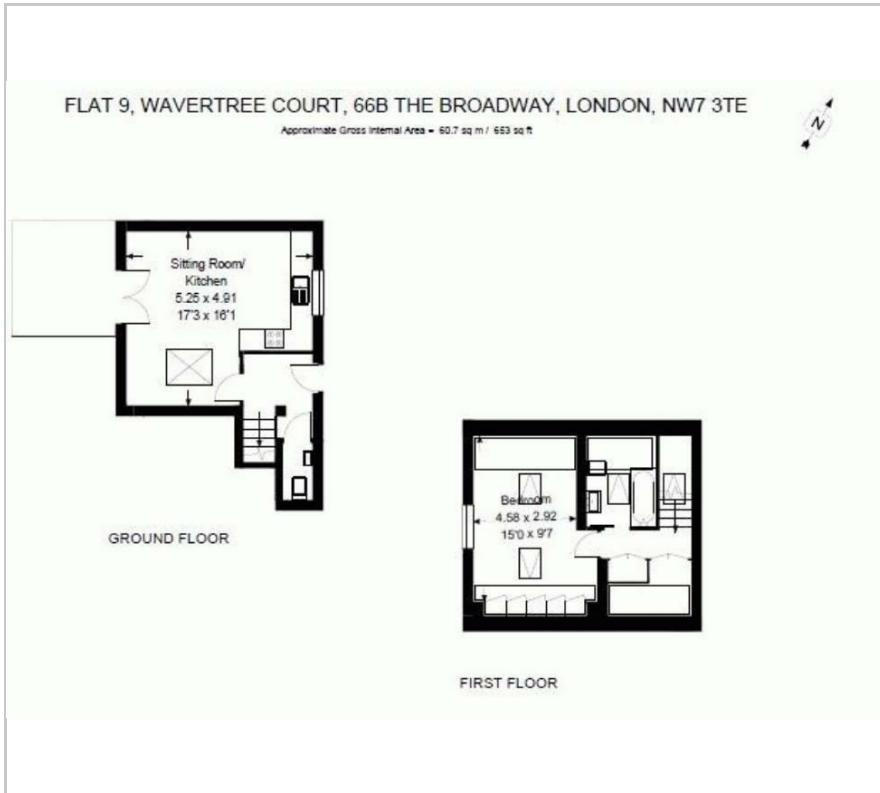
- One bedroom mews property
- Arranged over two floors
- Modern open-plan living space
- Contemporary fitted kitchen
- Separate guest WC
- Private patio garden
- Sought-after private development
- Moments from Mill Hill Broadway
- Close to Thameslink station

Viewing

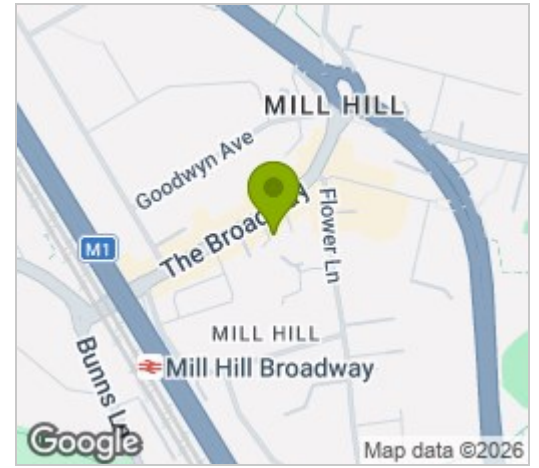
Please contact our Mill Hill Office on 02089590011 if you wish to arrange a viewing appointment for this property or require further information.



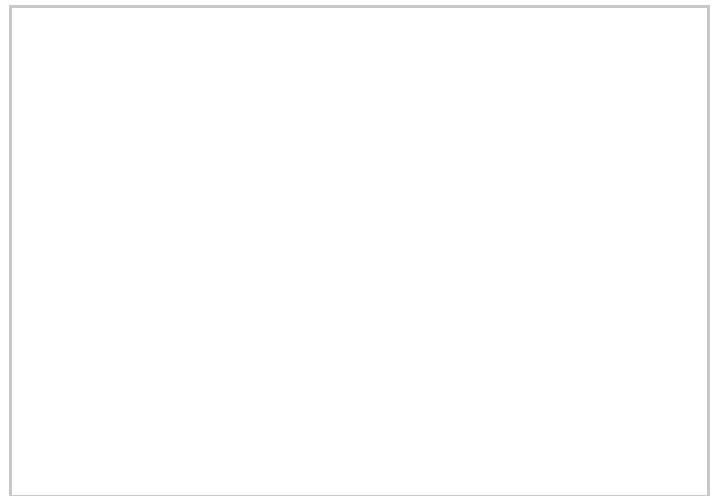
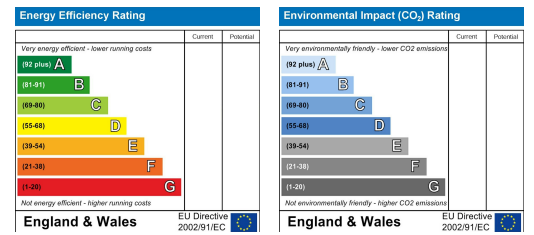
Floor Plan



Area Map



Energy Efficiency Graph



These particulars, whilst believed to be accurate are set out as a general outline only for guidance and do not constitute any part of an offer or contract. Intending purchasers should not rely on them as statements of representation of fact, but must satisfy themselves by inspection or otherwise as to their accuracy. No person in this firm's employment has the authority to make or give any representation or warranty in respect of the property.