



Offers In Excess Of £450,000

3 Bedroom Apartment for sale

15 Peldon Court Sheen Road, Richmond





Overview

Spacious 3-Bedroom Apartment in the Heart of Richmond

The Property: Space, Light, and Potential

Positioned on the second floor of a well-maintained building, this expansive three-double-bedroom apartment offers a rare combination of significant square footage and incredible value in one of London's most desirable locations.



Key Features

- 3 Double Bedrooms
- Balcony With Garden Views
- Seperate Large Storage Unit
- Sought After Location
- Close to Richmond Tube. National Rail, London Overground
- Close to Parks and Outdoor Spaces
- Ideally Positioned for Local Shops and Town Centre
- Chain Free
- First Time Buyers/ Investors , Look at This
- Sought After Location





Spacious 3-Bedroom Apartment in the Heart of Richmond

The Property: Space, Light, and Potential

Positioned on the second floor of a well-maintained building, this expansive three-double-bedroom apartment offers a rare combination of significant square footage and incredible value in one of London's most desirable locations.

Whether you are a first-time buyer looking to put your own stamp on a home, or an investor seeking a high-yield opportunity, this property is a "blank canvas" ready for tasteful decoration and minor refurbishment to truly unlock its full potential.

Living & Dining: The heart of the home is a large, south-facing living area. Bathed in natural light, the space is versatile enough to accommodate a full lounge suite, a dining area, and a dedicated work-from-home station. It features a charming Juliette balcony that invites fresh air and garden views into the room.

Outdoor Living: The spacious master bedroom features its own bright private balcony, a perfect sun-trap overlooking the south-facing communal gardens.

The Bedrooms: Three genuine double bedrooms offer rare flexibility for families, sharers, or those needing extra office space.

Kitchen & Facilities: The separate kitchen is well-proportioned, featuring an extensive range of cupboards, plenty of work surfaces, and a range of built-in appliances. For added convenience, the layout includes a bathroom and a separate toilet.

Bonus Storage: Uniquely, the property includes a large, secure walk-in storage unit located directly outside your front door in the communal hallway—ideal for bikes, cases, and general storage of large items.

The Lifestyle: Richmond Charm at Your Doorstep

Located in the sought-after TW9 area, this apartment offers the quintessential Richmond lifestyle. You are just steps away from a vibrant collection of independent local shops, artisan bakeries, and cafes that give the



Floorplans

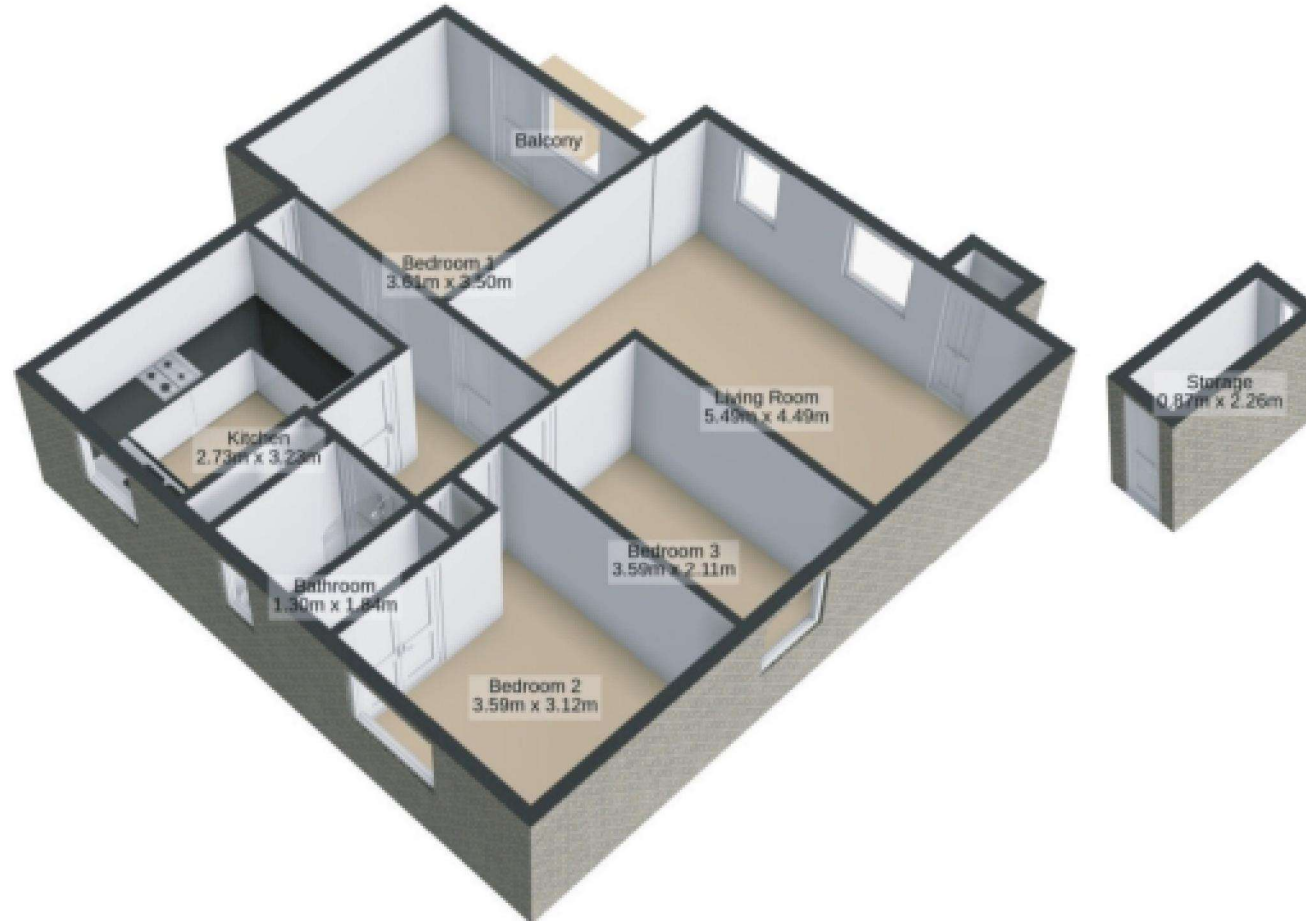


Peldon Court, Sheen Road, Richmond, TW9

APPROX. GROSS INTERNAL FLOOR AREA 793 SQ FT 73.6 SQ METRES

STORAGE 21 SQ FT 2 SQ METRES

TOTAL 814 SQ FT 75.6 SQ METRES



FIRST FLOOR

Floorplans

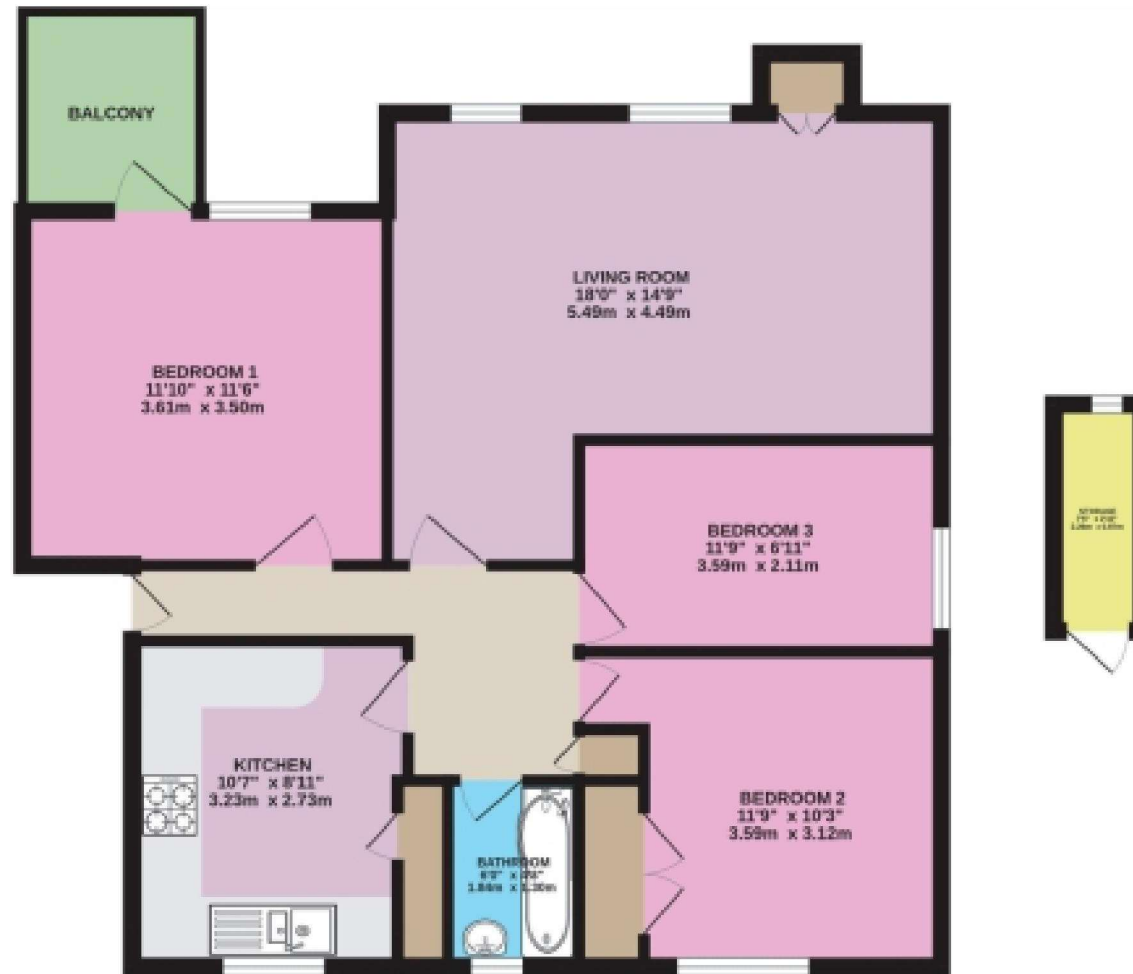


Peldon Court, Sheen Road, Richmond, TW9

APPROX. GROSS INTERNAL FLOOR AREA 793 SQ FT 73.6 SQ METRES

STORAGE 21 SQ FT 2 SQ METRES

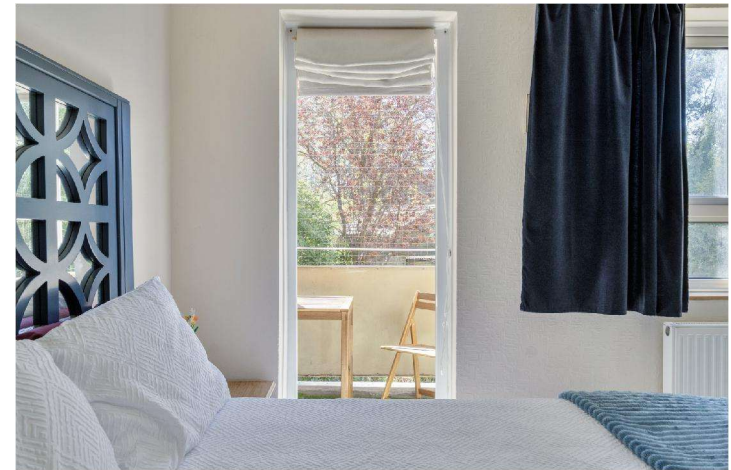
TOTAL 814 SQ FT 75.6 SQ METRES



FIRST FLOOR

EPC

Score	Energy rating	Current	Potential
92+	A		
81-91	B		
69-80	C	73 C	77 C
55-68	D		
39-54	E		
21-38	F		
1-20	G		



Marketed by EweMove Wapping & Bow
0203 866 7070 (24/7)
wapping@ewemove.com

