



## Wellington Road, NW8

**£692** Per week

A three double bedroom apartment in the centre of St Johns Wood. Spacious reception room with balcony, eat in kitchen with balcony, three good size double bedrooms with built in storage, modern bathroom and separate WC. Wood floors throughout.

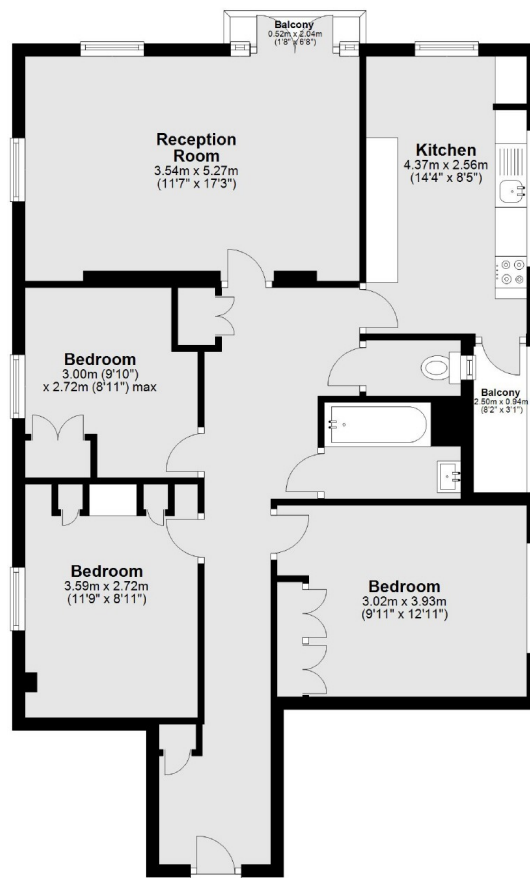
Elgood House is located just off of St Johns Wood High Street and less than a minute walk to St Johns Wood Underground station (Jubilee Line).

### Features

- Three Double Bedrooms
- Third Floor With Lift
- Eat In Kitchen
- Two Balconies
- Wood Floors Throughout
- Excellent Location

# Wellington Road, London, NW8

## Third Floor



Main area: Approx. 82.2 sq. metres (885.3 sq. feet)  
Plus balconies, approx. 3.4 sq. metres (36.7 sq. feet)