



## Shacklegate Lane, TW11

£925,000

Situated in a highly sought-after location this beautifully presented Victorian home is rich in charm and character, immaculately presented with a wonderful garden.

Shacklegate Lane is perfect for transport and school catchment, primary & secondary. Choose from three mainline stations all to Waterloo. A great spot for the High Street, Bushy Park and The River Thames.

### Features

- Three Bedrooms
- Open Fire
- Character Features
- Newly Fitted Kitchen
- Scope to Extend Further STPP
- Gorgeous Garden





## Shacklegate Lane, TW11

The welcoming front reception room showcases classic Victorian features, while the adjoining dining room flows seamlessly into a stylish contemporary kitchen and bright garden room, creating a warm and sociable space ideal for both everyday living and entertaining.

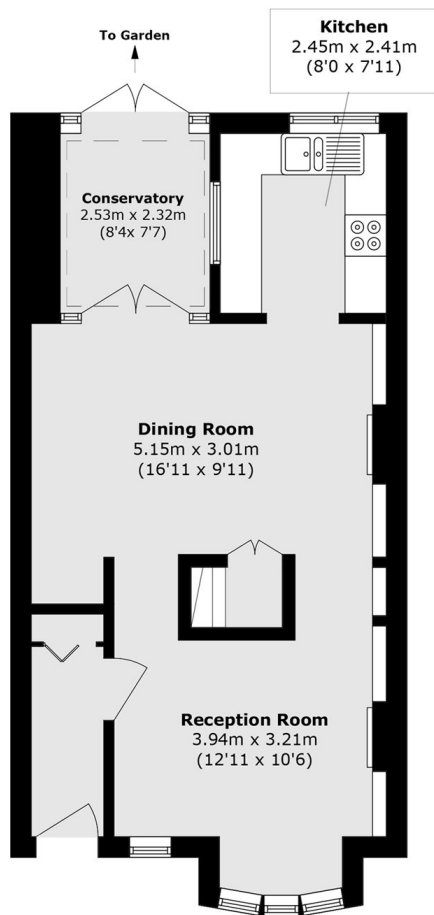
The first floor offers three well-proportioned double bedrooms, all filled with natural light, alongside a modern family bathroom finished to a high standard.

A true highlight of the property is the delightful rear garden, complete with a patio for alfresco dining, a well-maintained lawn, and a practical storage shed.

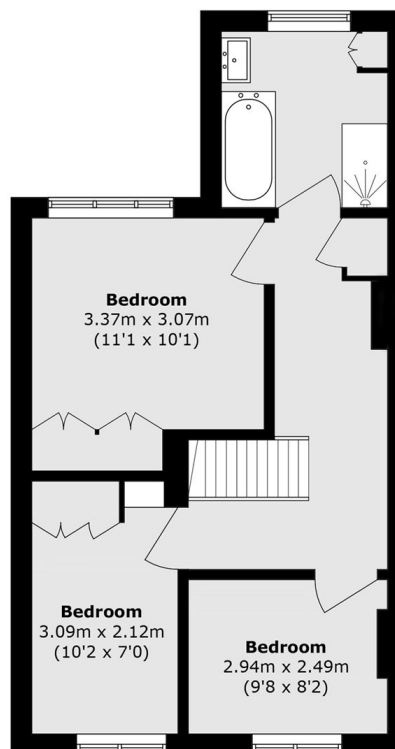




# Shacklegate Lane, Teddington, TW11



**Ground Floor**



**First Floor**

Total area (approx.): 99.2 sq. m (1067.7 sq. ft)