



42 Storth Lane | Kiveton Park | Sheffield | S26 5QT

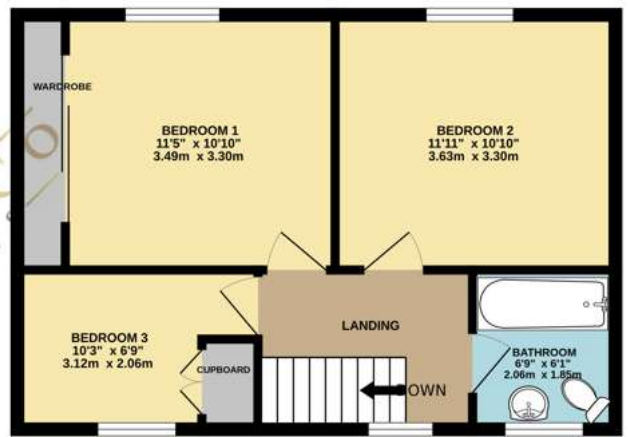
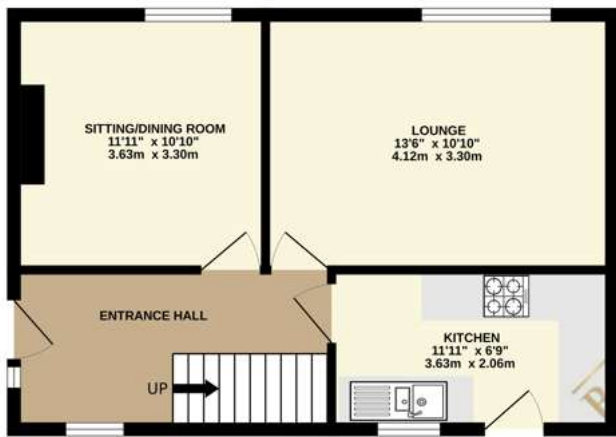
£230,000

Welcome to this well-proportioned three-bedroom semi-detached home, ideally situated in the popular village of Kiveton Park positioned on a substantial plot. Offering approximately 890 sq. ft. of living space, this property provides a fantastic opportunity for first-time buyers, growing families, or those looking to put their own stamp on a home. To the ground floor, the property opens into a welcoming entrance hall with stairs rising to the first floor. There are two generously sized reception rooms, including a bright lounge and a separate sitting/dining room, offering flexible living and entertaining space. The kitchen is positioned to the rear and provides a practical layout with access door to the rear garden. To the first floor, the property offers three well-proportioned bedrooms, including two spacious doubles and a further single room, ideal as a child's bedroom, nursery or home office. A family bathroom completes the accommodation. Externally, the property benefits from a good-sized plot offering potential for landscaping or extension, subject to the necessary planning permissions. Located in the sought-after area of Kiveton Park, the property is well placed for local amenities, schools, and transport links, making it an ideal choice for commuters and families alike. This is a great family home in a great location, early viewing is highly recommended to appreciate the space and opportunity on offer.



GROUND FLOOR
443 sq.ft. (41.2 sq.m.) approx.

1ST FLOOR
447 sq.ft. (41.6 sq.m.) approx.



Contact Details

79 Wales Road
Kiveton Park
Sheffield
South Yorkshire
S26 6RA

www.bellcoestates.com
info@bellcoestates.com
03333 580590

42 STORTH LANE
KIVETON PARK
ROTHERHAM
S26 5QT

Energy rating

C

Valid until

2 November 2030

Certificate number

9310-2697-8090-2100-1151

Property type

Semi-detached house

Total floor area

96 square metres

Agents Note: Whilst every care has been taken to prepare these sales particulars, they are for guidance purposes only. All measurements are approximate and for general guidance purposes only and whilst every care has been taken to ensure their accuracy, they should not be relied upon and potential buyers are advised to recheck the measurements