

Southern Road, Callington, PL17

Guide Price £310,000

3 1 1



A three bedroom detached family home within a sought after and popular residential setting. The property benefits from a private driveway, a single garage and far reaching countryside views.

Callington is a charming Cornish town located within a prime location in South East Cornwall and just 15 miles from Plymouth City Centre. The Town benefits from a range of facilities including a health centre, sports centre/gym, supermarkets, church and both primary and secondary schools. The area provides some idyllic countryside walks with Cotehele estate and house, Kit Hill and the Tamar Valley all nearby making it an ideal place for families and individuals alike.

Key Features

- TO ARRANGE A VIEWING PLEASE QUOTE BL0650
- Three Bedrooms
- Garage
- Popular Residential Area
- Potential To Create Fourth Bedroom (STPP)
- Detached
- Private Driveway
- Countryside Views
- Front & Rear Gardens
- Freehold

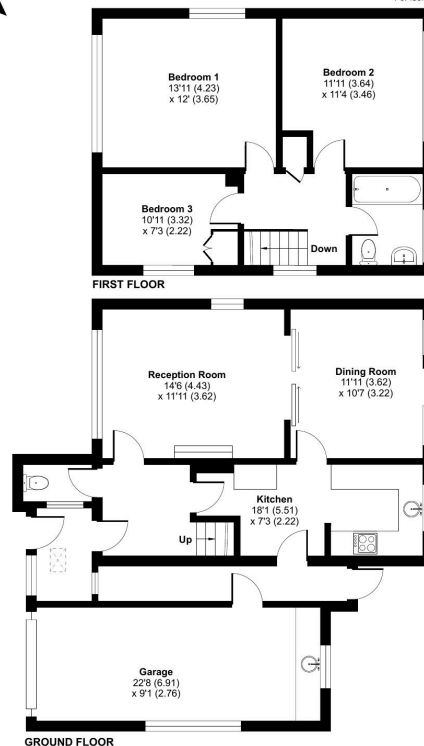
Brandon, Southern Road, Callington, PL17

Approximate Area = 1063 sq ft / 98.7 sq m

Garage = 269 sq ft / 24.9 sq m

Total = 1332 sq ft / 123.6 sq m

For identification only - Not to scale



Floor plan produced in accordance with RICS Property Measurement Standards incorporating International Property Measurement Standards (IPMS) Residential. © richcom 2025. Produced for Ben Estates TA Ben Langton Powered by exp. REF: 1242139