

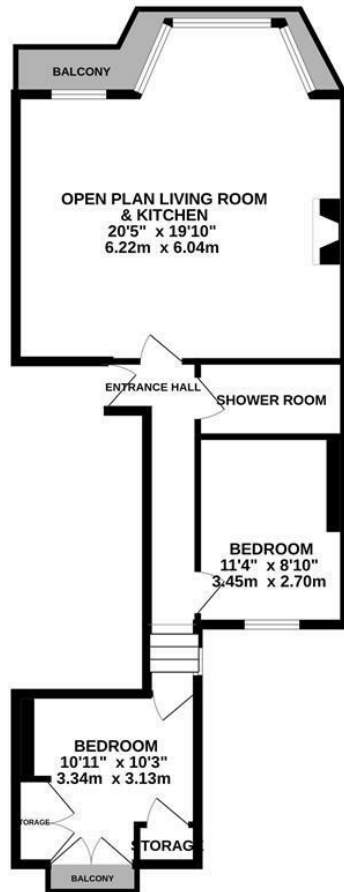
Marina, St. Leonards-On-Sea TN38 0BL

Guide price £300,000



A beautifully presented TWO BEDROOM SEAFRONT APARTMENT with UNBEATABLE SEA VIEWS situated in a prime location. The apartment enjoys an IDYLIC POSITION sitting adjacent to the beach. It's also just a short stroll from the hub of St. Leonards On Sea where you'll find local independent shops, award winning eateries and galleries, along with a mainline railway station with connections through to London. Spanning the much coveted first floor of this attractive, PERIOD RESIDENCE, the accommodation here is PRESENTED TO A BEAUTIFUL STANDARD THROUGHOUT enjoying a WEALTH OF CHARACTER FEATURES including high ceilings, sash windows and a WROUGHT IRON BALCONY to enjoy the direct sea views. The accommodation here is arranged as a bay fronted OPEN PLAN LIVING SPACE which is open to the STYLISH FITTED KITCHEN offering the ideal sociable space. There are TWO DOUBLE BEDROOMS both positioned at the rear of the property with the principal bedroom benefitting from double doors opening to a JULIETTE BALCONY and BUILT-IN STORAGE together with a CONTEMPORARY SHOWER ROOM. Set in a SOUGHT AFTER LOCATION, this fantastic property would make the PERFECT SEASIDE RETREAT or family home and is not to be missed.

FIRST FLOOR
662 sq.ft. (61.5 sq.m.) approx.



TOTAL FLOOR AREA : 662 sq.ft. (61.5 sq.m.) approx.

Whilst every attempt has been made to ensure the accuracy of the floorplan contained here, measurements of doors, windows, rooms and any other items are approximate and no responsibility is taken for any error, omission or mis-statement. This plan is for illustrative purposes only and should be used as such by any prospective purchaser. The services, systems and appliances shown have not been tested and no guarantee as to their operability or efficiency can be given.

Made with Metropix ©2025

