



MILLBANK, SW1P

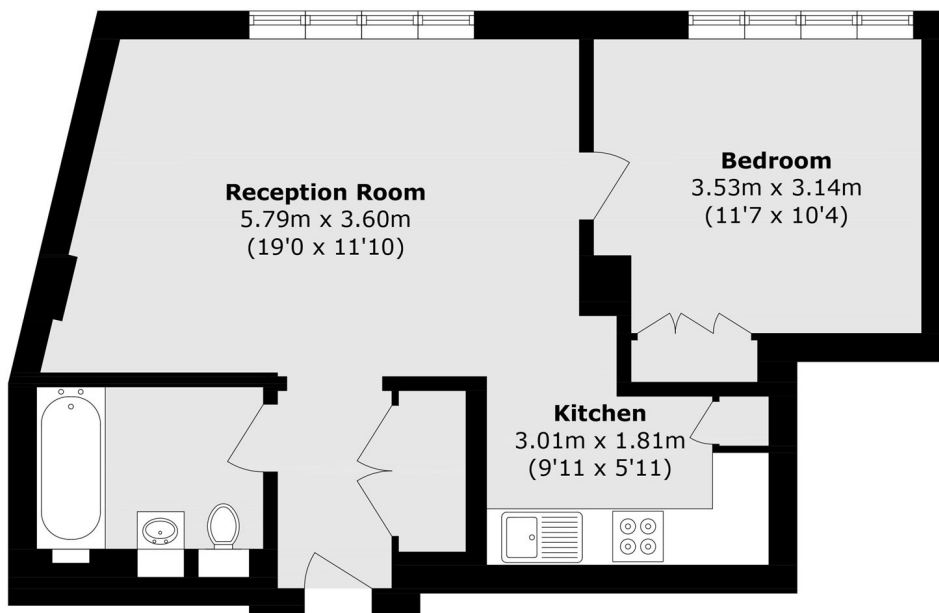
£1,000 per week

A beautifully refurbished one-bedroom apartment set within a prestigious 24-hour portered development in the heart of

One Large Double Bedroom
Recently Renovated
Prestigious Building

Gym
Cinema
Swimming Pool

STEP INSIDE MILLBANK



Third Floor

Total area (approx.): 47.9 sq. m (515.5 sq. ft)

Pimlico & Westminster
020 7828 8100

Energy Rating: B We aim to make our particulars both accurate and reliable. However, they are not guaranteed; nor do they form part of an offer or contract. If you require clarification on any points then please contact us, especially if you're traveling some distance to view. Please note that appliances and heating systems have not been tested and therefore no warranties can be given as to their good working order

MARSH &
PARSONS