



HW

ESTATE AGENTS

Sackville Road, Hove

£400,000



## Sackville Road

Hove, Hove

Beautiful three bedroom Victorian maisonette in central Hove, blending period charm and modern style. Features spacious rooms, open plan kitchen, home office spaces, and close to seafront and station.

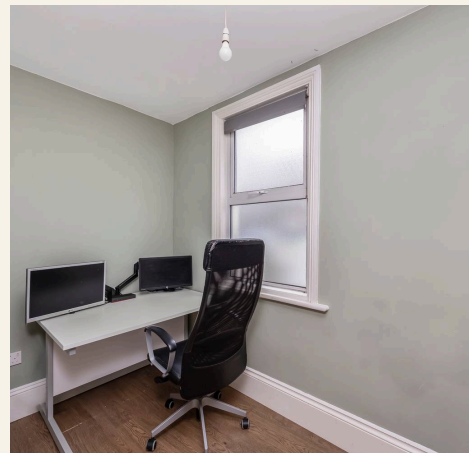
Council Tax band: B

Tenure: Leasehold

EPC Energy Efficiency Rating: D

EPC Environmental Impact Rating: D

- Guide Price: £400,000 - £425,000
- Victorian architecture
- Period features
- Large bay windows
- Open plan kitchen living area
- Integrated appliances
- Modern bathroom
- Walk-in shower



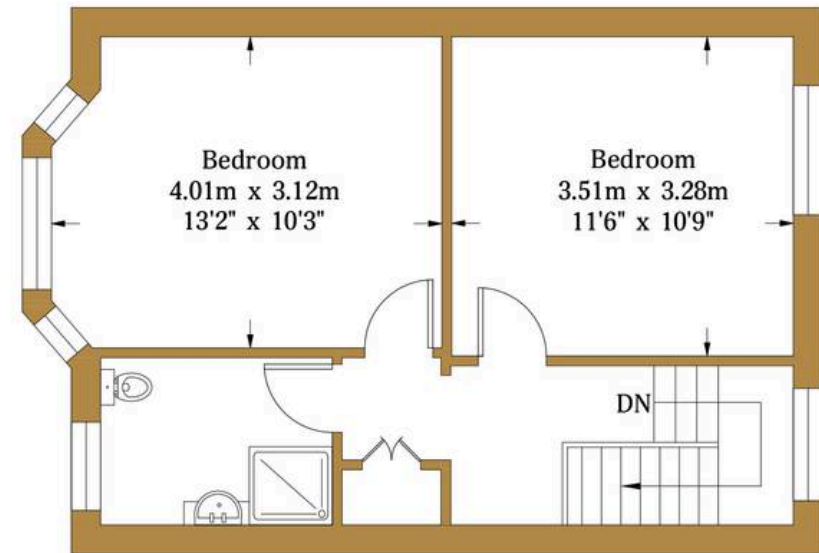
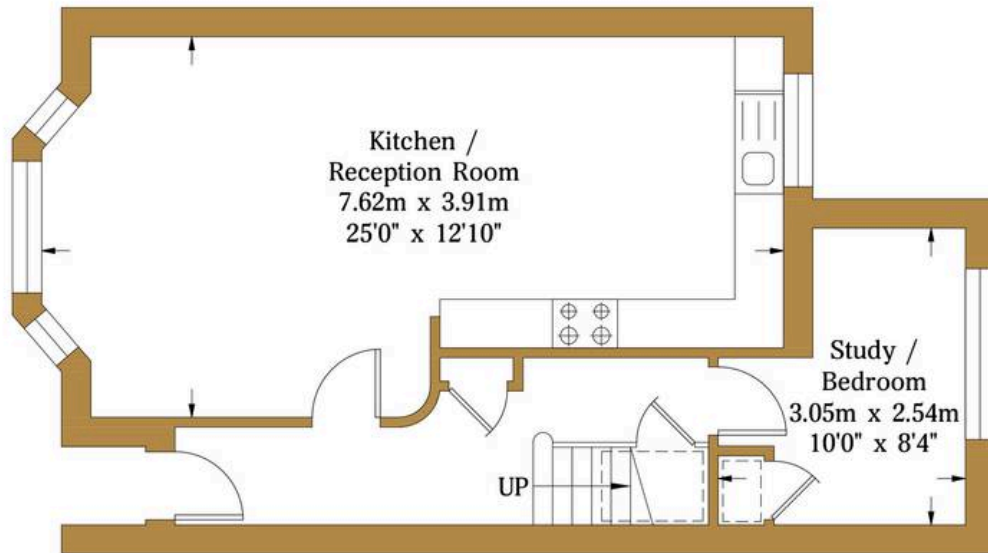


# Sackville Road

Approx. Gross Internal Area:- 79.4 sq.m. 855.0 sq.ft.

HW

ESTATE AGENTS



Ground Floor  
Approximate Floor Area  
455.0 sq ft  
(42.3 sq m)

First Floor  
Approximate Floor Area  
400.0 sq ft  
(37.1 sq m)

Illustration for identification purposes only, measurements are approximate, not to scale.

© hwestateagents



## HW Estate Agents

HW Estate Agents, 80 Goldstone Villas, Hove - BN3 3RU

01273 359000 · [hove@hwestateagents.co.uk](mailto:hove@hwestateagents.co.uk) · [www.hwestateagents.co.uk](http://www.hwestateagents.co.uk)

HW

ESTATE AGENTS