

Cranston Close

Ickenham • Middlesex • UB10 8TH

PCM: £1,300 PCM



coopers
est 1986

This WELL PRESENTED apartment is set in a QUIET cul-de-sac in the HEART of Ickenham. The FANTASTIC location is within walking distance to local amenities. It also has easy access to the A40/M40/M25 and London transport links.

Popular location

One bedroom

One bathroom

Second floor

Resident parking

Gas central heating

Fitted wardrobes

Close to sought after schools

Walking distance to transport links

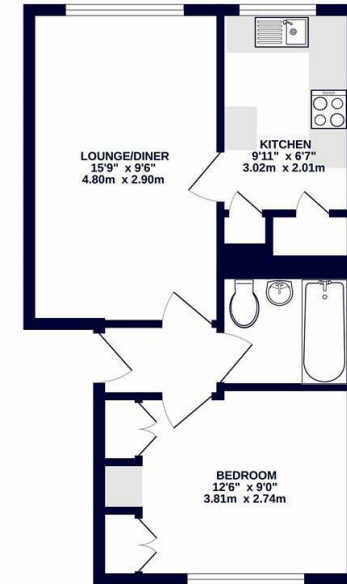
Access to A40/M40/M25

Available Date

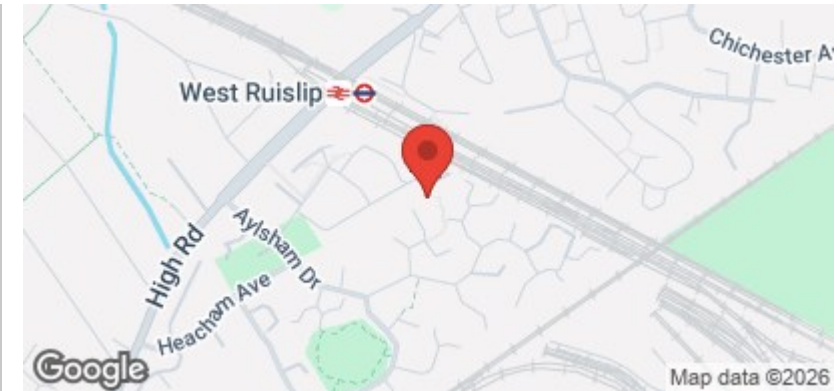
12th June 2026



2ND FLOOR
426 sq.ft. (39.6 sq.m.) approx.



TOTAL FLOOR AREA: 426 sq.ft. (39.6 sq.m.) approx.
Whilst every attempt has been made to ensure the accuracy of the floorplan contained here, measurements of doors, windows, stairs and any other items are approximate and no responsibility is taken for any error, omission or mis-statement. This plan is for illustrative purposes only and should be used as such by any prospective purchaser. The services, systems and appliances shown have not been tested and no guarantee, as to their operation or efficiency can be given.
Made with Metropac (C)2024



coopers
est 1986

01895 625 625

126-128 High Street, Ruislip,
Middlesex, HA4 8LL
rl@coopersresidential.co.uk

CoopersResidential.co.uk

Energy Efficiency Rating	
Current	Potential
A	
B	
C	
D	
E	
F	
G	

Not energy efficient - higher running costs

EU Directive 2002/91/EC

Environmental Impact (CO ₂) Rating	
Current	Potential
A	
B	
C	
D	
E	
F	
G	

Not environmentally friendly - higher CO₂ emissions

EU Directive 2002/91/EC

Important Notice: These particulars, whilst believed to be accurate are set out as a general outline only for guidance and do not constitute any part of an offer or contract. Intending purchasers should not rely on them as statements or representation of fact, but must satisfy themselves by inspection or otherwise has the authority to make or give any representation or warranty in respect of the property.