



## Fairmont Avenue, E14

### £550,000

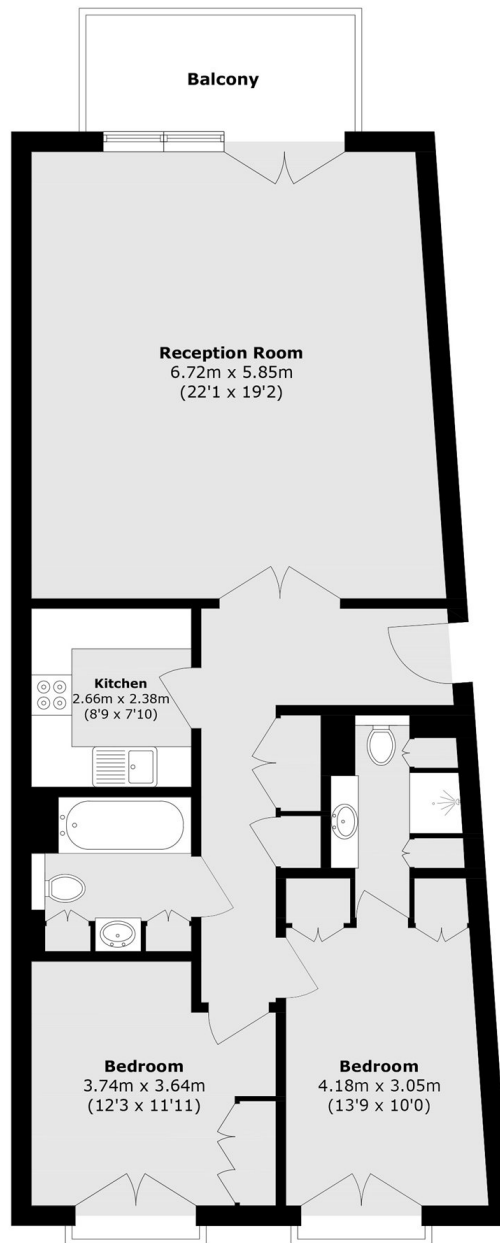
Offered to the market on a chain-free basis is this 1,056 sq ft home set within the sought-after development of New Providence Wharf. The property features a private balcony overlooking the river, two double bedrooms, two bathrooms, concierge service, and excellent residents' facilities.

New Providence Wharf benefits from excellent transport links, being under a three-quarter-mile walk from Canary Wharf, with three DLR stations located within approximately one-third of a mile.

### Features

- River Facing
- 1,056 Square Feet Internally
- Private Balcony
- Concierge Service
- Resident Facilities
- Chain Free

# Fairmont Avenue, London, E14



Total area (approx.): 98.4 sq. m (1059.1 sq. ft)  
Balcony area (approx.): 6.9 sq. m (74.2 sq. ft)

## Dexters

Canary Wharf  
39 Westferry Road  
London  
E14 8JH  
Sales  
020 7517 1199

Energy Rating: B. We aim to make our particulars both accurate and reliable. However they are not guaranteed; nor do they form part of an offer or contract. If you require clarification on any points then please contact us, especially if you're traveling some distance to view. Please note that appliances and heating systems have not been tested and therefore no warranties can be given as to their good working order.

 **RICS** | Regulated  
Estate Agent  
and Letting Agent

[dexters.co.uk](https://dexters.co.uk)