



Guide Price
£250,000

Freehold

3x  1x  2x 

**Windmill Road,
Gillingham, Kent, ME7**

OVER 60?

Secure this property
for up to **59% less!**

Wards
Helping you move forwards



Main features

- Victorian terraced house situated 'a stones throw' from Medway hospital
- Gas central heating and double glazing
- Modern kitchen and shower room
- Ideal first time buy
- Offers the rare benefit for off road parking for 2 cars to the rear

Accommodation

GROUND FLOOR

- Porch
- Entrance Hall
- Lounge: 13'4 into bay x 10'8 (4.07m x 3.25m)
- Dining Room: 11'10 x 9'1 (3.61m x 2.77m)
- Kitchen: 8'9 x 7'8 (2.67m x 2.34m)
- Utility Room: 8'4 x 6'9 (2.54m x 2.06m)
- Shower Room

SPLIT LEVEL FIRST FLOOR

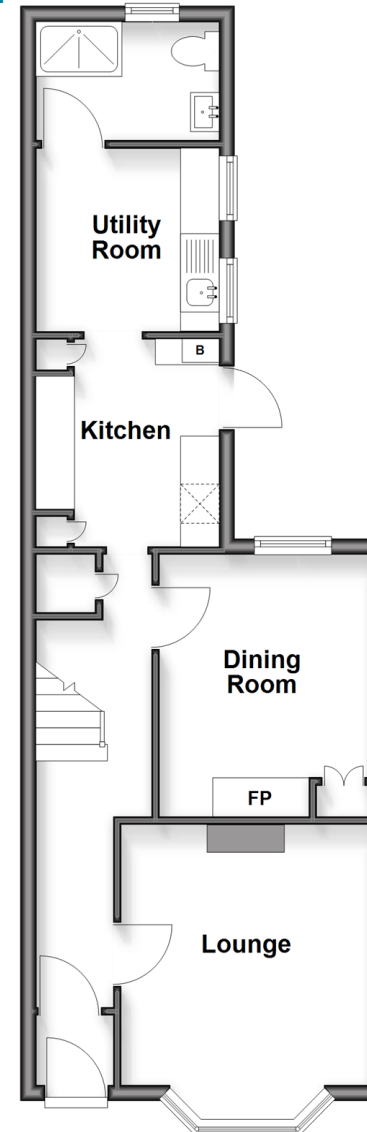
- Landing
- Bedroom 1: 14'4 x 11'0 (4.37m x 3.36m)
- Bedroom 2: 10'9 x 9'5 (3.28m x 2.87m)
- Bedroom 3: 9'0 x 8'0 (2.75m x 2.44m)

OUTSIDE

- Front Garden
- Rear Garden
- Driveway

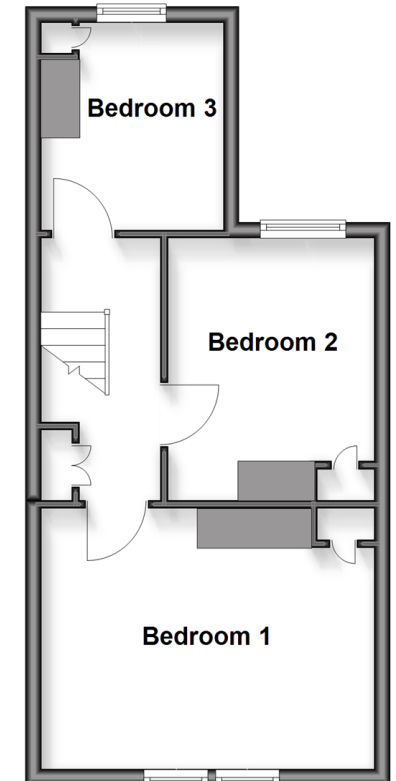
Ground Floor

Approx. 45.8 sq. metres (492.6 sq. feet)



Split Level First Floor

Approx. 35.9 sq. metres (386.4 sq. feet)



Call Gillingham - 01634 851191 ■ wardsokent.co.uk

- Legal advice should be taken to verify fixtures/fittings, planning, alterations and/or lease details
- Appliances & services are untested, dimensions are approximate and floor plans are not to scale
- Through a Homewise Home For Life Plan people aged 60+ can secure this property for up to 59% less, by purchasing a Lifetime Lease



10927532/20260207/ML/GS