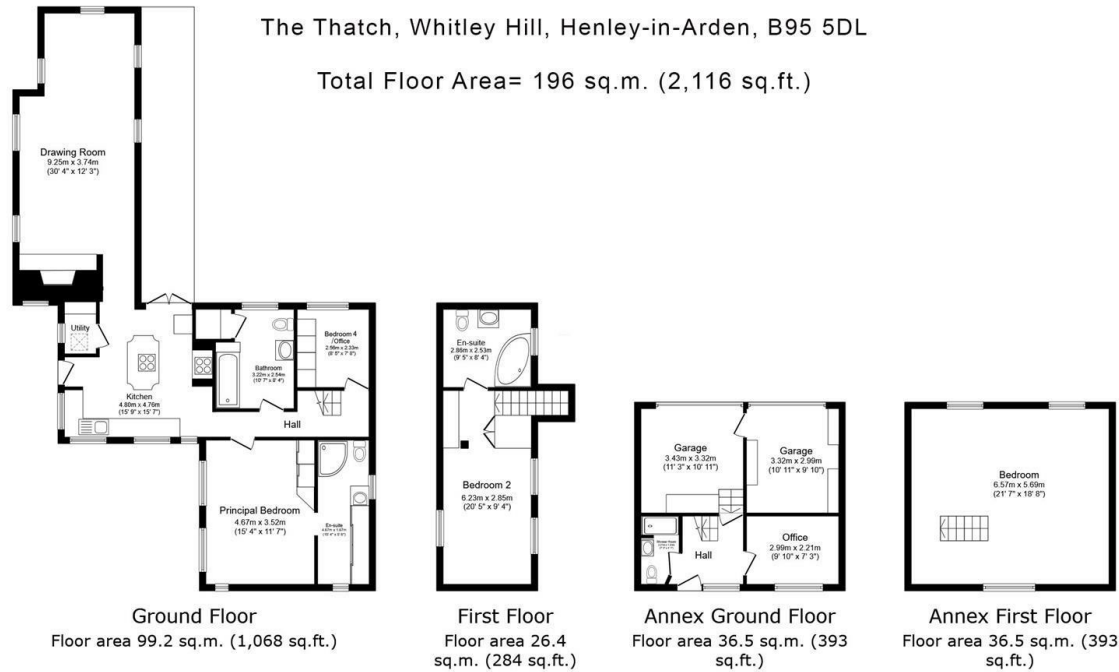




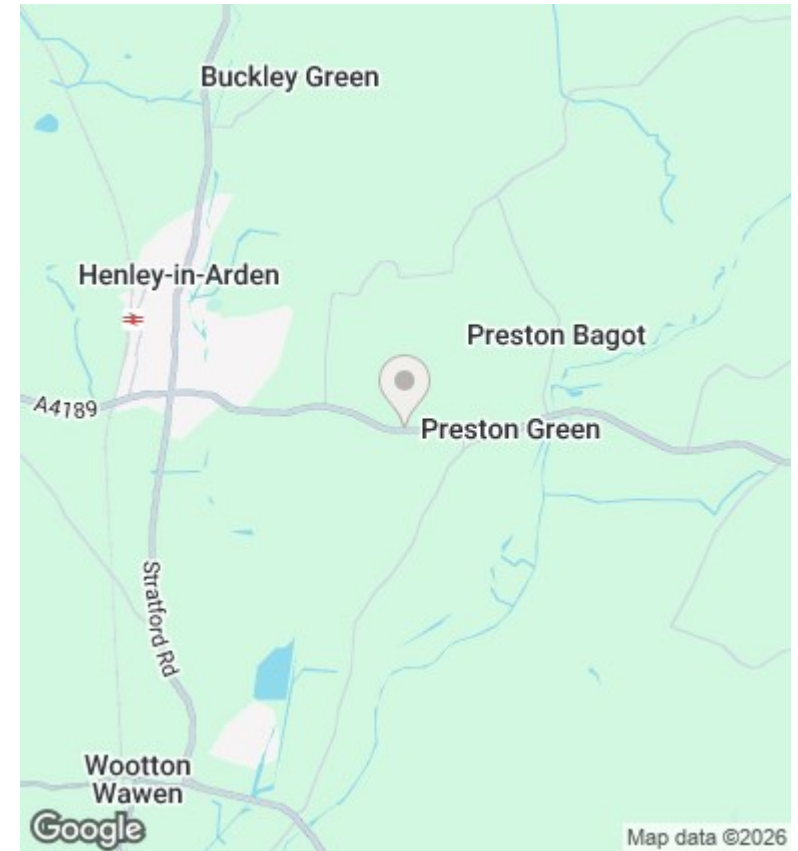
## The Thatch Whitley Hill, Henley-In-Arden, B95 5DL

Offers Over £700,000

- Enchanting Grade II Listed Period Home dating back to the 16th Century.
- Perfect for multi-generational living with an ancillary annexe.
- Double Garage plus off-road parking for up to ten vehicles.
- Manicured and landscaped lawns.
- Semi-rural living luxury with stunning countryside views.



This floor plan is for illustrative purposes only. It is not drawn to scale. Any measurements, floor areas (including any total floor area), openings and orientations are approximate. No details are guaranteed, they cannot be relied upon for any purpose and do not form any part of any agreement. No liability is taken for any error, omission or misstatement. A party must rely upon its own inspector(s).



## Directions

## Viewings

Viewings by arrangement only. Call 01564 332550 to make an appointment.

## Council Tax Band

F

## EPC Rating:

E