



Guide Price
£525,000

Freehold

3x  1x  2x 

**Camborne Road,
Welling, Kent, DA16**

OVER 60?

Secure this property
for up to **59% less!**

Wards
Helping you move forwards



Main features

- Chain free
- Large rear garden
- Quiet location
- Catchment area for Bexley Grammar School
- Fantastic links to London

Accommodation

GROUND FLOOR

Entrance Hall

Lounge: 13'0 x 12'3 (3.97m x 3.74m)

Kitchen/Dining Area: 17'7 x 12'6 (5.36m x 3.81m)

FIRST FLOOR

Landing

Bedroom 1: 12'7 x 11'2 (3.84m x 3.41m)

Bedroom 2: 12'3 x 8'7 (3.74m x 2.62m)

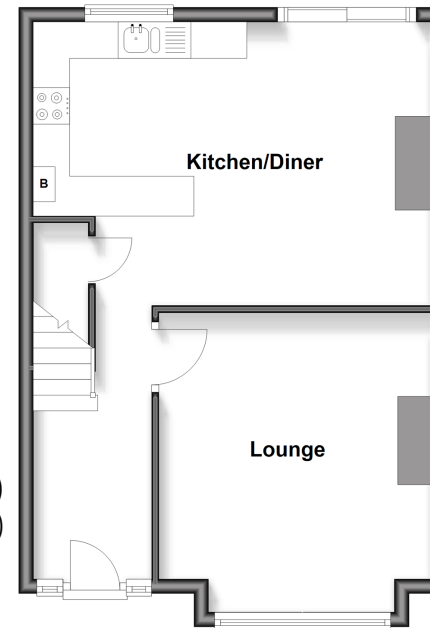
Bedroom 3: 8'9 x 6'7 (2.67m x 2.01m)

OUTSIDE

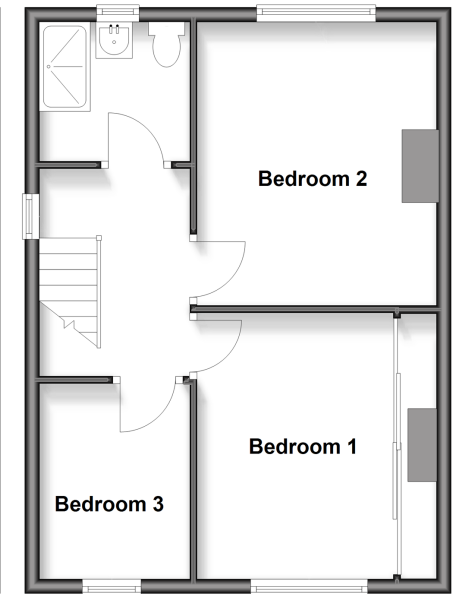
Driveway

Rear Garden

Ground Floor
Approx. 42.9 sq. metres (461.5 sq. feet)



First Floor
Approx. 41.7 sq. metres (448.9 sq. feet)



Call Welling - 020 8301 6679 ■ wardsof Kent.co.uk

- Legal advice should be taken to verify fixtures/fittings, planning, alterations and/or lease details
- Appliances & services are untested, dimensions are approximate and floor plans are not to scale
- Through a Homewise Home For Life Plan people aged 60+ can secure this property for up to 59% less, by purchasing a Lifetime Lease



15009463/20260314/RL/LK