



## Kensington Gardens Square, W2

### £450,000

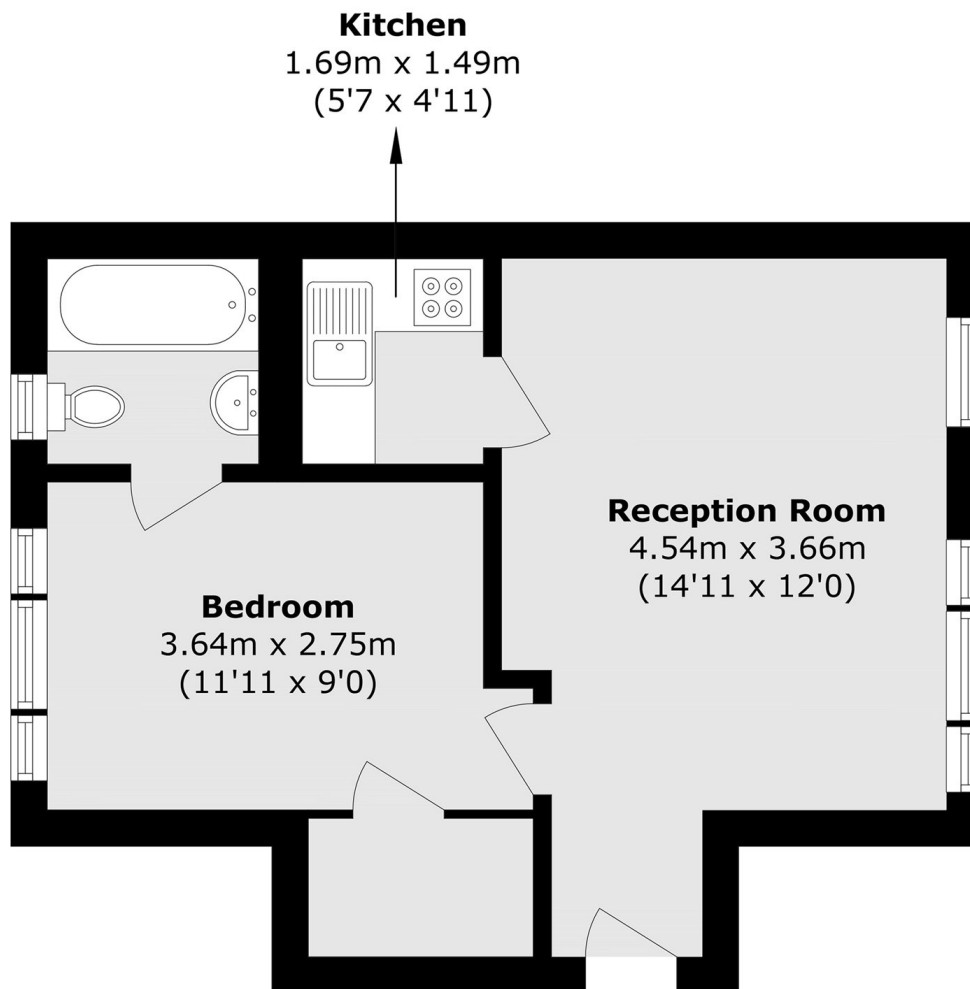
A spacious third floor flat (with lift) in a white stucco fronted building overlooking a garden square. The reception room has large windows and room to dine, there is a separate kitchen, and the bedroom has good closet space.

Kensington Gardens Square is conveniently located, close to prime Notting Hill and the regeneration of Bayswater, as well as the green spaces of Hyde Park and plenty of local restaurants, pubs and shops.

### Features

- One Double Bedroom
- Lift
- Share of Freehold
- White Stucco Fronted
- Garden Square
- Notting Hill
- Close To Amenities

# Kensington Gardens Square, London, W2



Total area (approx.): 37.5 sq. m (403.7 sq. ft)