



11 Kelvin Close, Hythe, SO45 5LW
£489,950



ANTHONY JAMES
PROPERTIES



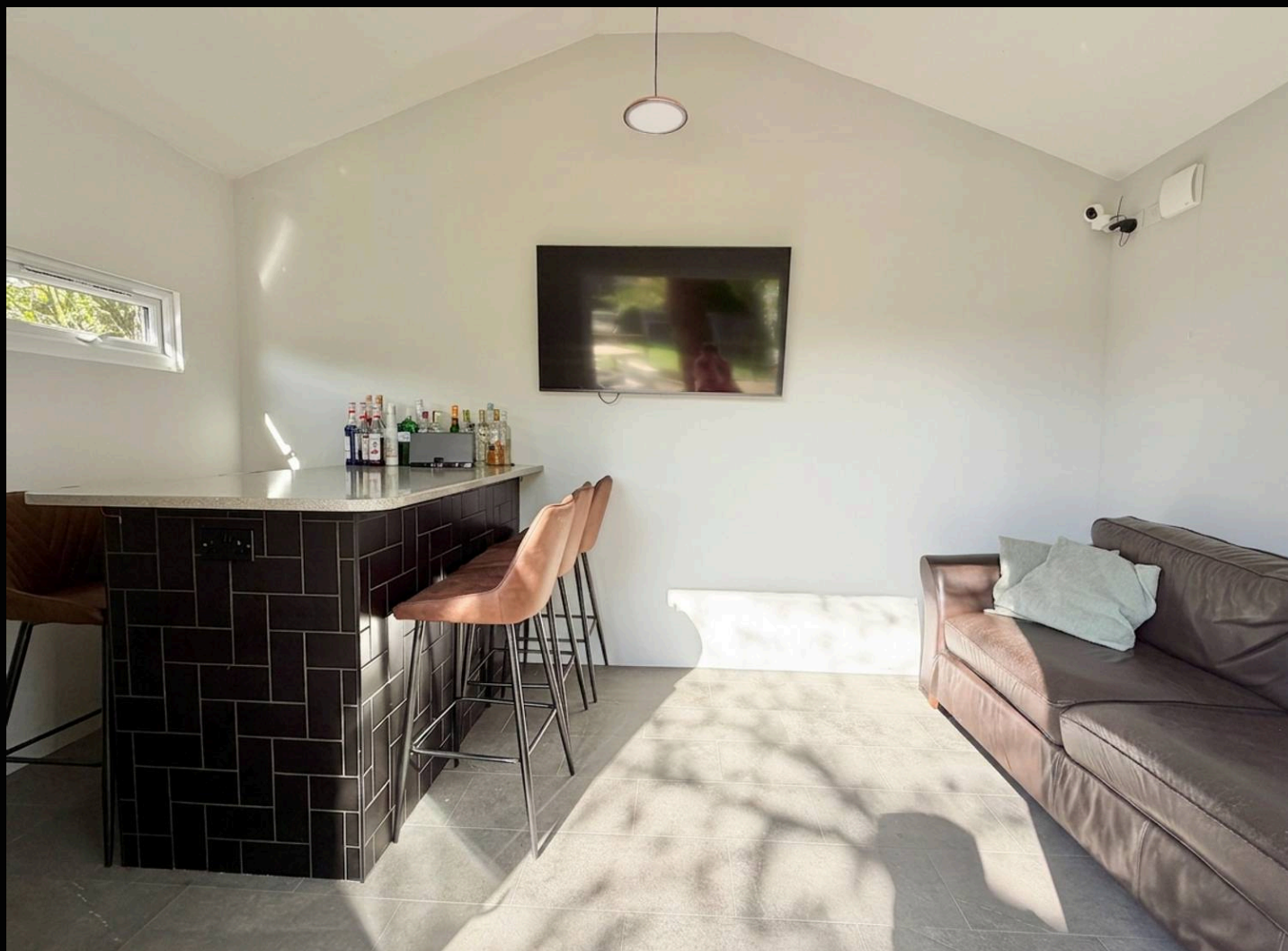
11 Kelvin Close

Hythe, Southampton

This spacious and flexible detached bungalow, ideally situated close to the amenities of Hythe Village. Having undergone extensive renovation in 2015, the property benefits from a replacement gas central heating system, rewiring, replastering throughout, UPVC double glazing, and new internal and external doors. The well-planned, extended accommodation comprises an inviting entrance hall, four generously sized bedrooms, a family bathroom, a comfortable lounge, a dining room, and a contemporary kitchen. The property stands on a generous 'wrap-around' plot that provides ample parking for multiple vehicles, complemented by two electric vehicle chargers for added convenience. Outbuildings include a superb garden room with a fitted bar, and a versatile gym or games room, both of which are equipped with hard-wired data connections to facilitate home working or leisure activities. A single garage with power connected offers further storage or secure parking options. The home's thoughtful layout and quality finishes create a welcoming atmosphere, while the low-maintenance gardens ensure that the property remains easy to care for.

Council Tax band: D

Tenure: Freehold



1 Southward House
Dibden Purlieu SO45 4PT



T: 02380 844405
info@anthonyjamesproperties.co.uk

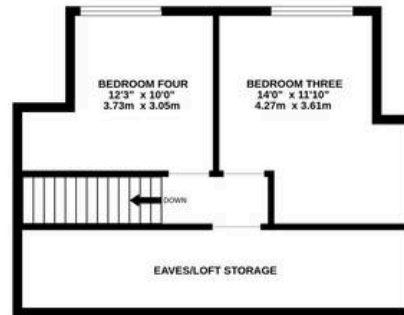




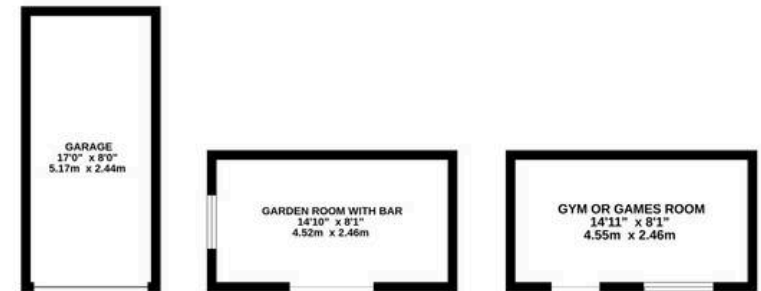
GROUND FLOOR



1ST FLOOR



OUTBUILDINGS



Whilst every attempt has been made to ensure the accuracy of the floorplan contained here, measurements of doors, windows, rooms and any other items are approximate and no responsibility is taken for any error, omission or mis-statement. This plan is for illustrative purposes only and should be used as such by any prospective purchaser. The services, systems and appliances shown have not been tested and no guarantee as to their operability or efficiency can be given.

Made with Metropix ©2026