

Ellerdine Road, TW3

£2,350 PCM

A beautifully presented three bedroom semi-detached home with a private south east facing garden and a modern finish throughout.

This recently renovated property offers modern living conditions, a newly fitted kitchen with integrated appliances, including a dishwasher. The spacious bathroom suite has also been fully refurbished and offers a large bathtub with a shower above the bath. Upstairs, the property has three bedrooms two of which are good sized doubles and a large family bathroom. The property further benefits from off-street parking for two cars.

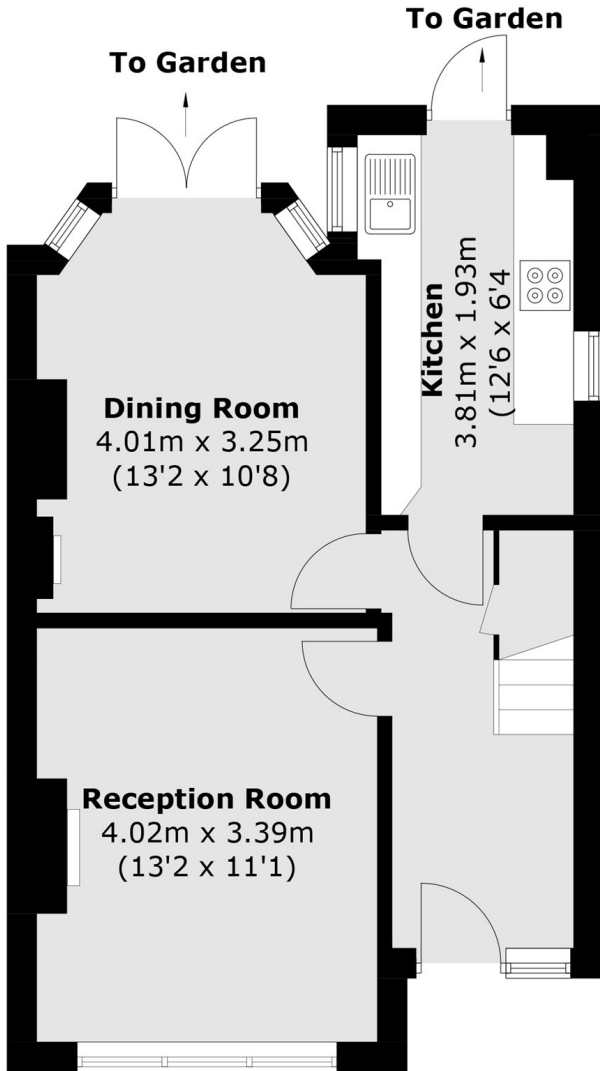
A beautifully presented family home with a modern finish throughout, benefitting from three bedrooms, a newly fitted kitchen, two contemporary bathrooms and a private south east facing garden.

Ellerdine Road is located just 0.7 miles to Hounslow mainline station with direct trains to London Waterloo and under 1 mile to Whitton High Street. The property also offers great access to the A316, M3 and M25 and some of the area's finest schools.

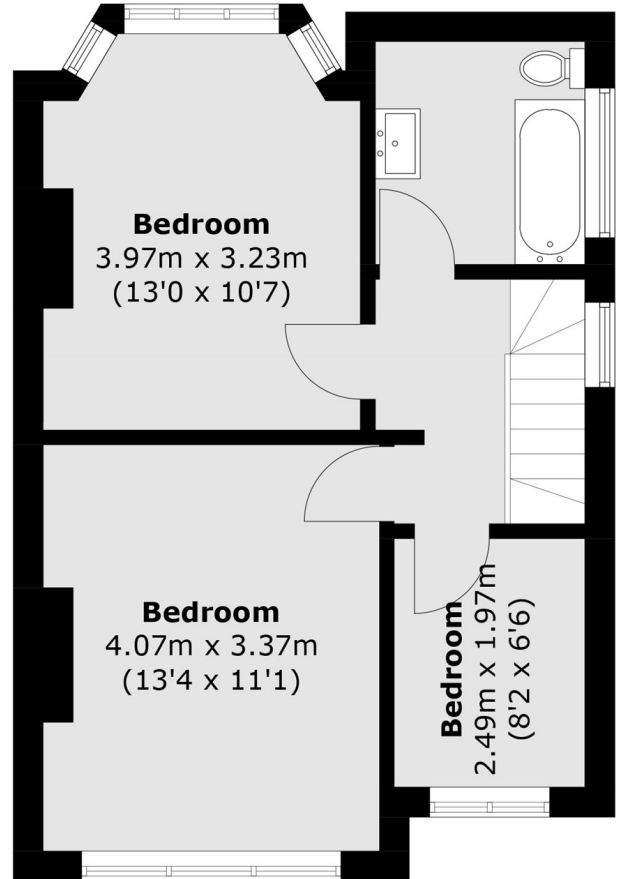
- Newly Renovated • Three Bedrooms • Modern Finish •
- Semi-Detached • South East Facing Garden • Off-Street Parking •

SNELLERS

ESTATE AGENTS



Ground Floor



First Floor

Total area (approx.): 86.5 sq. m (931.1 sq. ft)

Snellers Twickenham Lettings
64-66 Heath Road
Twickenham
TW1 4BX
020 8892 5678
twickenhamlettings@snellers.co.uk

Energy Rating: D We aim to make our particulars both accurate and reliable. However they are not guaranteed; nor do they form part of an offer or contract. If you require clarification on any points then please contact us, especially if you're traveling some distance to view. Please note that appliances and heating systems have not been tested and therefore no warranties can be given as to their good working order