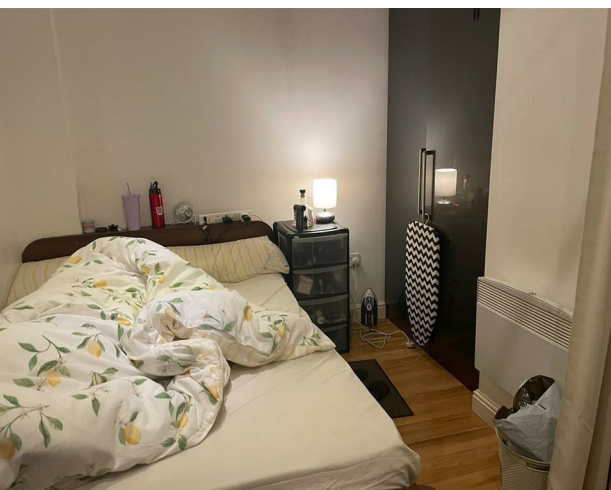
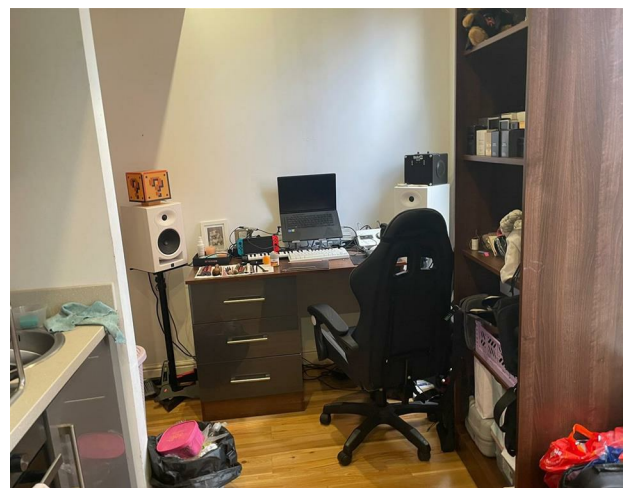


Flat 2B, 26 Hyde Terrace, Leeds, LS2 9LN  
£780 Per month

**V&L**  
PROPERTIES





**Flat 2B, 26 Hyde Terrace, Leeds, LS2 9LN**

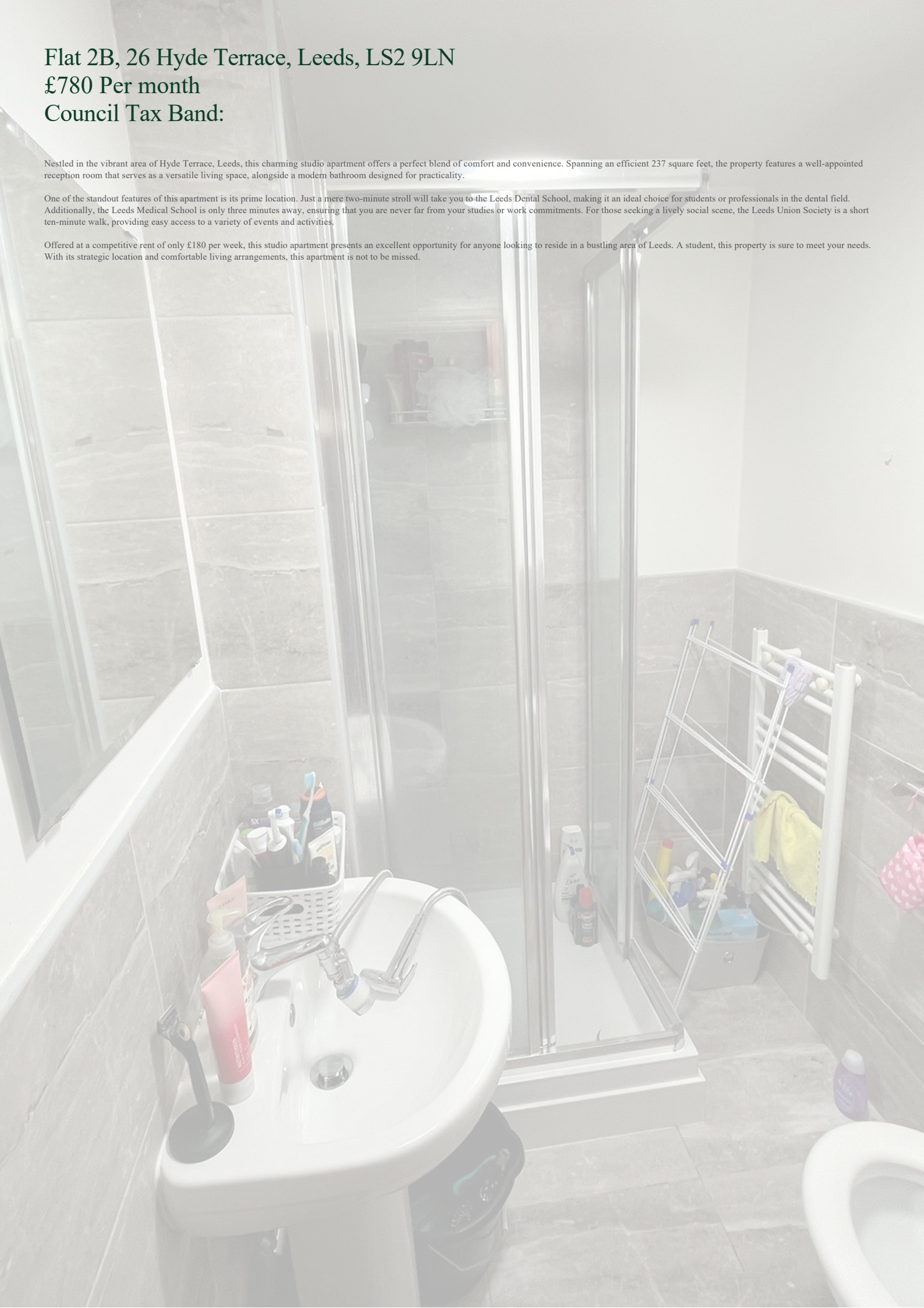
**£780 Per month**

**Council Tax Band:**

Nestled in the vibrant area of Hyde Terrace, Leeds, this charming studio apartment offers a perfect blend of comfort and convenience. Spanning an efficient 237 square feet, the property features a well-appointed reception room that serves as a versatile living space, alongside a modern bathroom designed for practicality.

One of the standout features of this apartment is its prime location. Just a mere two-minute stroll will take you to the Leeds Dental School, making it an ideal choice for students or professionals in the dental field. Additionally, the Leeds Medical School is only three minutes away, ensuring that you are never far from your studies or work commitments. For those seeking a lively social scene, the Leeds Union Society is a short ten-minute walk, providing easy access to a variety of events and activities.

Offered at a competitive rent of only £180 per week, this studio apartment presents an excellent opportunity for anyone looking to reside in a bustling area of Leeds. A student, this property is sure to meet your needs. With its strategic location and comfortable living arrangements, this apartment is not to be missed.







22 Regent Street  
Leeds  
LS2 7QA  
01133 225737  
info@vgl-properties.co.uk  
vgl-properties.co.uk

