



Cromwell Crescent  
Earls Court, SW5

CHESTERTONS





A striking and generously proportioned one-bedroom apartment set within a beautiful red brick mansion block, offering high ceilings, grand proportions and direct access to well-maintained communal gardens.

- Large 1 bedroom + study
- Direct communal garden access
- Interior designed
- Fully furnished
- Over 800 square feet

### £3,900 pcm

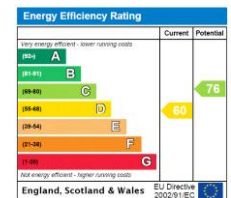
Additional tenant charges apply (fees apply to non-AST tenancies only)

Tenancy Agreement Fee: £300

References per Tenant/Guarantor: £60

Inventory check (approx. £100 – £250 inc. VAT)

[chestertons.co.uk/property-to-rent/applicable-fees](http://chestertons.co.uk/property-to-rent/applicable-fees)



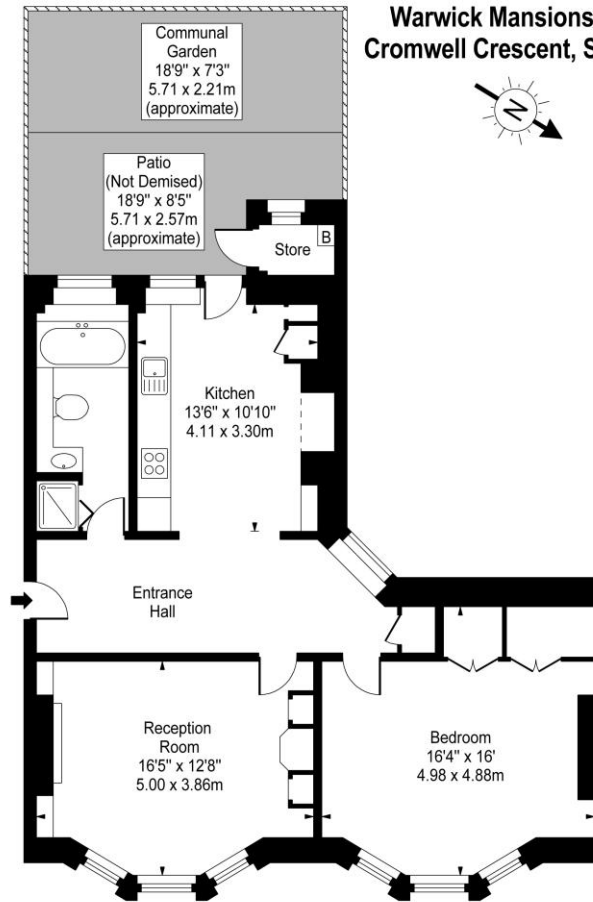
**Minimum Term:** 12 months  
**Deposit Required:** £4,500.00  
**Local Authority:** Kensington and Chelsea  
**Council Tax Band:** E  
**EPC Rating:** D  
**Furnished**

### Chestertons South Kensington Lettings

44-48 Old Brompton Road  
 South Kensington  
 London  
 SW7 3DY

[southkensingtonlettingsusers@chestertons.co.uk](mailto:southkensingtonlettingsusers@chestertons.co.uk)  
 02075891244

**Warwick Mansions,  
Cromwell Crescent, SW5**



Lower Ground Floor

Approx Gross Internal Area **808 Sq Ft - 75.06 Sq M**  
(Excluding Store)

For Illustration Purposes Only - Not To Scale  
[www.goldlens.co.uk](http://www.goldlens.co.uk)  
Ref. No. 015034K

Chesterton UK Services Limited trading as Chestertons for themselves and for the vendor of this property whose agents they are, give notice that (i) these particulars do not constitute any part of an offer or contract, (ii) all statements contained within these particulars are made without responsibility on the part of Chestertons or the vendor, (iii) whilst made in good faith, none of the statements contained within these particulars are to be relied upon as a statement or representation of fact, (iv) any intending purchasers must satisfy themselves by inspection or otherwise as to the correctness of each of the statements contained within these particulars, (v) the vendor does not make or give either Chestertons or any person in their employment any authority to make or give representation or warranty whatsoever in relation to this property. Wide angle lenses may be used. ©Copyright Chestertons | Chesterton Global Ltd | Registered Office 40 Connaught Street, Hyde Park, London W2 2AB Registered Company Number 05334580.



This paper is  
100% recyclable