

2 Lupin Close Coton Park, Rugby, CV23 0LE

Perfect for first-time buyers, this beautifully presented two-bedroom semi-detached home offers stylish, modern living on a sought-after residential development, ideally positioned close to well-regarded schools, excellent local amenities, and superb transport links.

Available through shared ownership with a 25 / share priced at £58,750, this is a fantastic opportunity to step onto the property ladder, with the remaining 75 / subject to a monthly rent of £555.00 payable to Citizen Housing Group.

From the moment you step inside, the property feels bright, welcoming, and ready to move straight into. The entrance hall leads to a contemporary guest WC, a spacious lounge perfect for relaxing evenings, and a modern kitchen diner designed for everyday living and entertaining alike. Double doors open directly onto the enclosed rear garden, creating the ideal space for summer dining, hosting friends, or simply enjoying the outdoors. The garden itself features both a patio seating area and lawned garden.

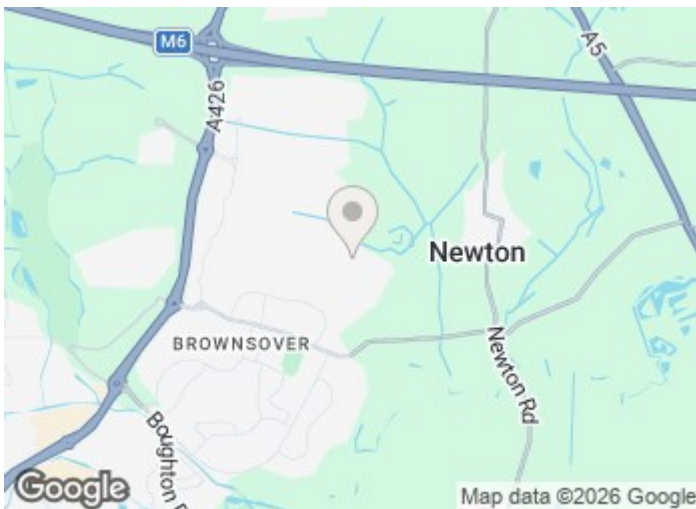
£58,750

2 Lupin Close

Coton Park, Rugby, CV23 0LE



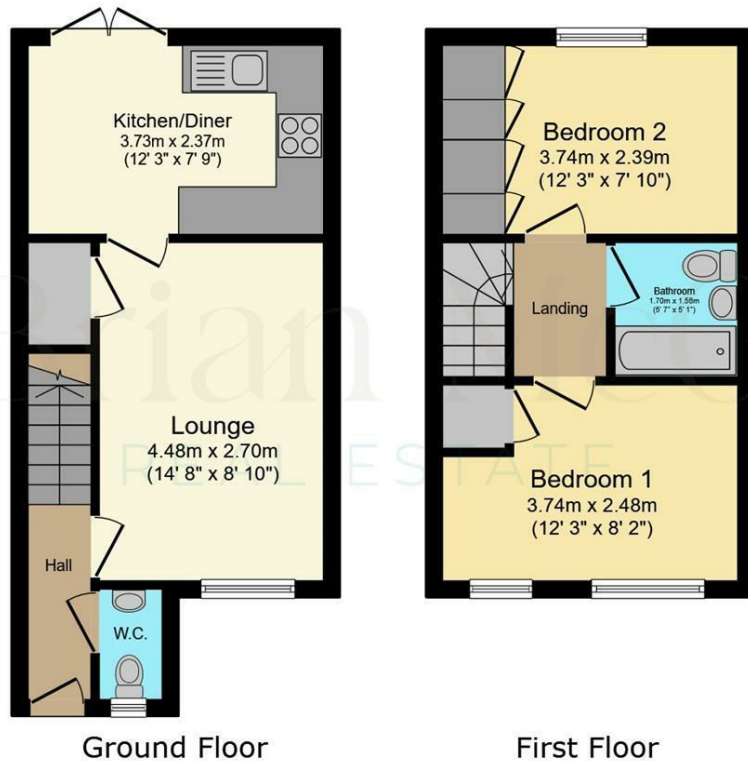
- Immaculately presented two-bedroom end terraced home
- Ideal purchase for first-time buyers
- Double doors opening onto enclosed rear garden
- Excellent access to schools, amenities, and transport links
- Available on a 25 / shared ownership basis for £58,750
- Located on a popular modern residential development
- Two generous double bedrooms and modern family bathroom
- Remaining 75 / subject to monthly rent payable to Citizen Housing Group
- Spacious lounge and modern kitchen diner
- Driveway parking, double glazing, and gas central heating



[Directions](#)



Floor Plan



Total floor area: 53.2 sq.m. (573 sq.ft.)

This floor plan is for illustrative purposes only. It is not drawn to scale. Any measurements, floor areas (including any total floor area), openings and orientations are approximate. No details are guaranteed, they cannot be relied upon for any purpose and do not form any part of any agreement. No liability is taken for any error, omission or misstatement. A party must rely upon its own inspection(s). Powered by www.Propertybox.io

These particulars, whilst believed to be accurate are set out as a general outline only for guidance and do not constitute any part of an offer or contract. Intending purchasers should not rely on them as statements of representation of fact, but must satisfy themselves by inspection or otherwise as to their accuracy. No person in this firm's employment has the authority to make or give any representation or warranty in respect of the property.

