



## Rotherhithe New Road, London, SE16 2SD

THIS PROPERTY IT IS VIRTUALLY STAGED

A spacious two bedroom apartment located a short walk away from both Canada Water and Surrey Quays station.

The apartment features a generous living room with space to dine, a separate kitchen with access to a private balcony, two well-sized double bedrooms with storage, and a stylish family bathroom.

Additional storage can be found in the hallway.

The property is close to many local amenities such as a leisure centre, shopping centre, supermarket, local cafes, local restaurants, and the greenery of Southwark Park.

- Spacious Two bedroom Apartment
- Close to Local Amenities
- Plenty of Storage
- Private Balcony with Views of The London skyline
- Furnished

**Alex & Matteo**  
ESTATE AGENTS

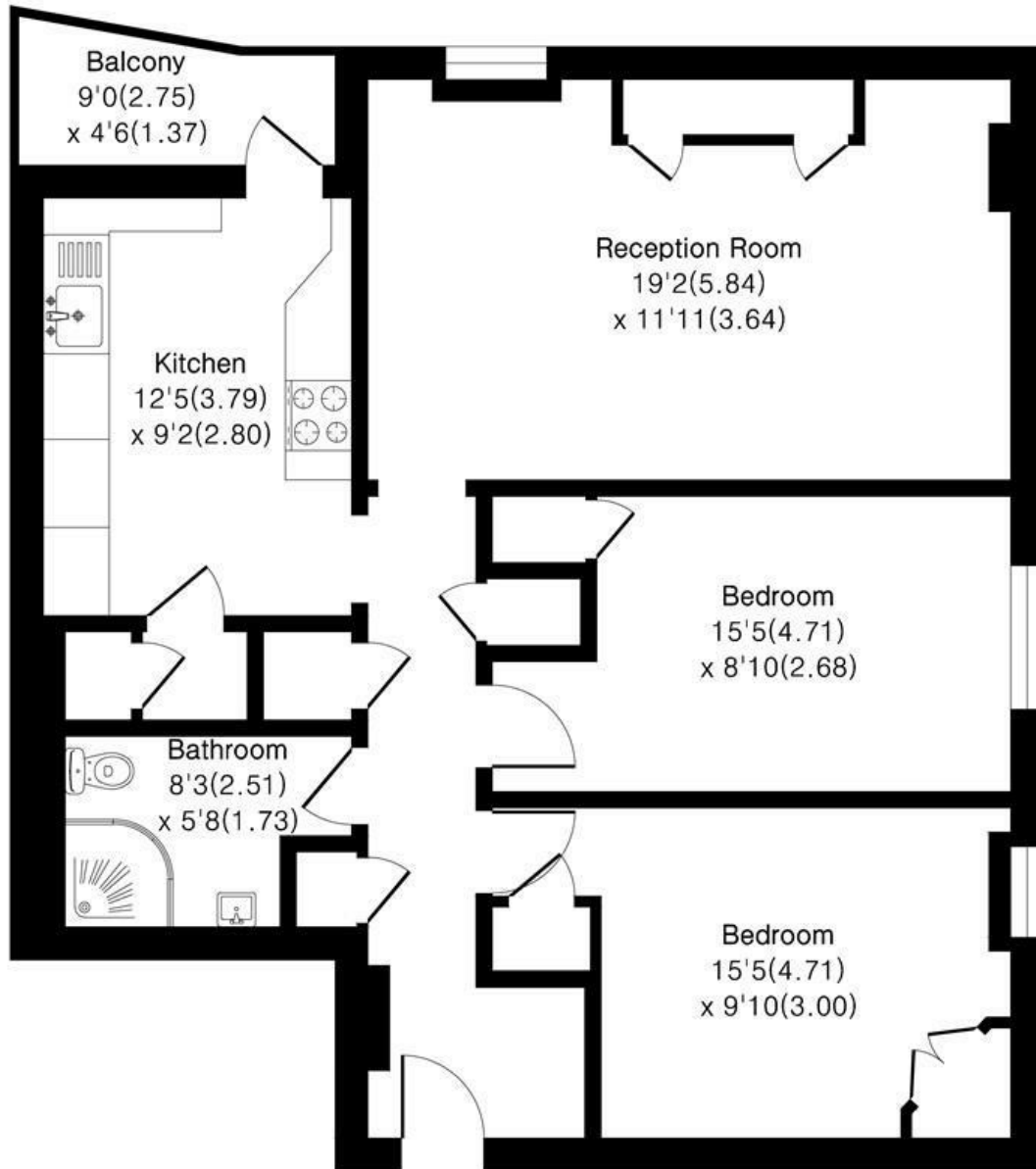
**£2,000 Per month**

# 130 Tissington Court, Rotherhithe

## New Road London, SE16 2SD

Approximate Area = 815 sq ft / 76 sq m

For identification only - Not To Scale



### 15th Floor

Floor plan Produced in accordance with RICS Property Measurement 2nd Edition.  
Incorporating International Property Measurement Standards (IPMS2 Residential).

Energy Efficiency Rating		Current	Potential
Very energy efficient - lower running costs			
(92 plus) <b>A</b>			
(81-91) <b>B</b>			
(69-80) <b>C</b>			
(55-68) <b>D</b>	61	61	
(39-54) <b>E</b>			
(21-38) <b>F</b>			
(1-20) <b>G</b>			
Not energy efficient - higher running costs			
England & Wales		EU Directive 2002/91/EC	